

| | | | | | |
|-----|-----|-----|-----|-----|-----|
| A | B | C | D | E | F |
| 1 | 2 | 3 | 4 | 5 | 6 |
| 7 | 8 | 9 | 10 | 11 | 12 |
| 13 | 14 | 15 | 16 | 17 | 18 |
| 19 | 20 | 21 | 22 | 23 | 24 |
| 25 | 26 | 27 | 28 | 29 | 30 |
| 31 | 32 | 33 | 34 | 35 | 36 |
| 37 | 38 | 39 | 40 | 41 | 42 |
| 43 | 44 | 45 | 46 | 47 | 48 |
| 49 | 50 | 51 | 52 | 53 | 54 |
| 55 | 56 | 57 | 58 | 59 | 60 |
| 61 | 62 | 63 | 64 | 65 | 66 |
| 67 | 68 | 69 | 70 | 71 | 72 |
| 73 | 74 | 75 | 76 | 77 | 78 |
| 79 | 80 | 81 | 82 | 83 | 84 |
| 85 | 86 | 87 | 88 | 89 | 90 |
| 91 | 92 | 93 | 94 | 95 | 96 |
| 97 | 98 | 99 | 100 | 101 | 102 |
| 103 | 104 | 105 | 106 | 107 | 108 |
| 109 | 110 | 111 | 112 | 113 | 114 |
| 115 | 116 | 117 | 118 | 119 | 120 |
| 121 | 122 | 123 | 124 | 125 | 126 |
| 127 | 128 | 129 | 130 | 131 | 132 |

ITEM ABBREVIATIONS :-

- CCC - COMMON CONTROL CUBICLE.
- DM - DENSITY MONITOR.
- OM-A - OPERATING MECHANISM.FOR POLE A.
- OM-B - OPERATING MECHANISM.FOR POLE B
- OM-C - OPERATING MECHANISM.FOR POLE C

DIAGRAM BASED ON IEC 617-83.

- LOCAL REMOTE SWITCH IN REMOTE POSITION.
- CIRCUIT BREAKER IN " OFF " POSITION.
- AUXILIARY CIRCUIT " OFF " .
- DRAWN WITHOUT GAS PRESSURE.
- SPRING DISCHARGED.

NOTE :- WIRING TO BE DONE WITH CU WIRE (GREY FOR DC CKT.

BLACK FOR AC CKT. , GREEN + YELLOW FOR EARTHING.)

- 1:- 2.5 SQ. MM. FOR CONTROL CKT.
- 2:- 2.5 SQ. MM. FOR MOTOR CKT.
- 3:- 4.0 SQ. MM. FOR DOOR & PANEL EARTHING .

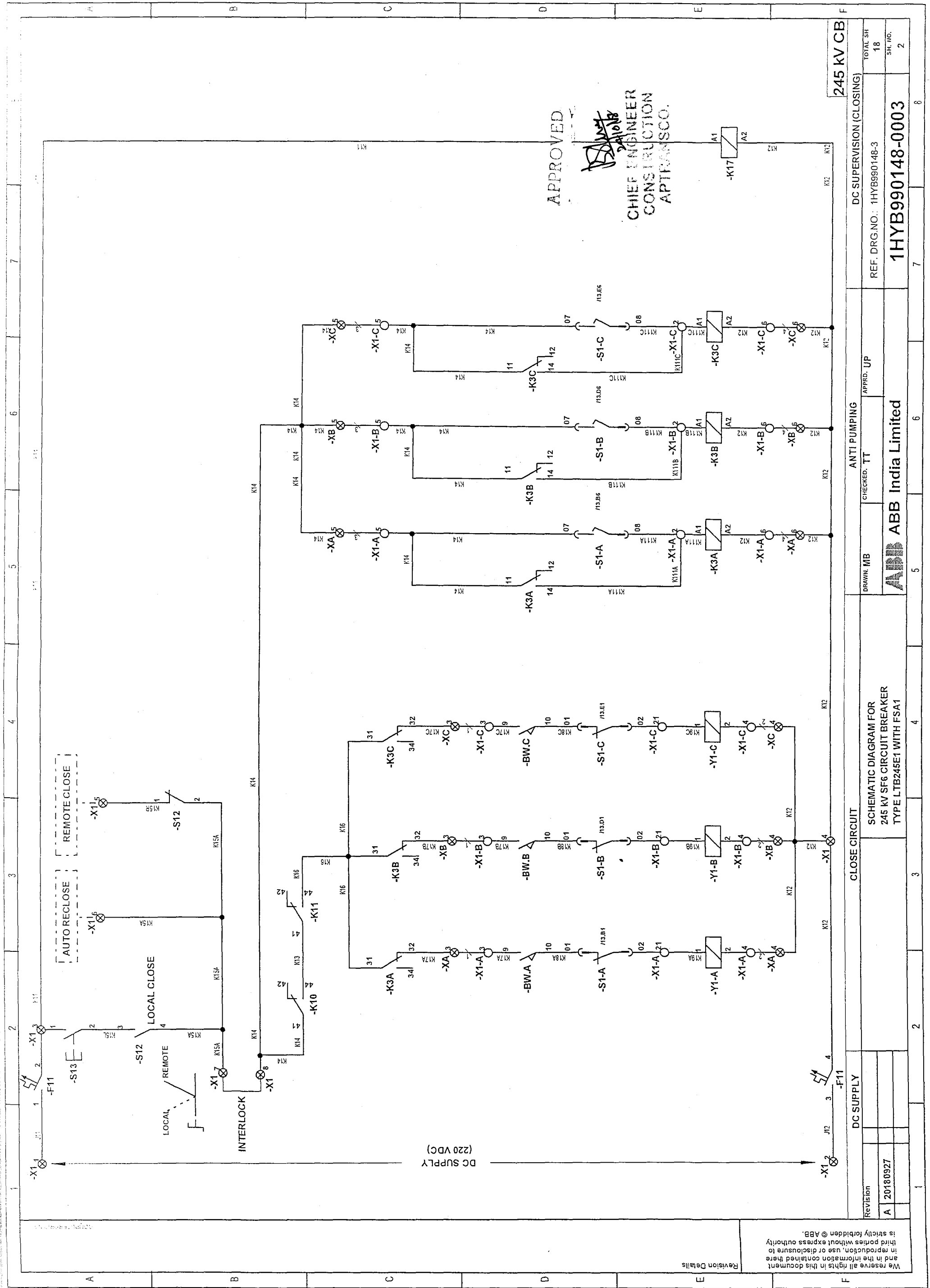
- ⊗ TERMINALS IN OPERATING MECHANISM (B).
- TERMINALS IN OPERATING MECHANISM (A&C).
- SUPPLY TERMINALS.

CUSTOMER CONNECTIONS ARE WITH TERMINAL BLOCK CONNECTWELL MAKE TYPE STH4.
INTERNAL MECHANISM CONNECTIONS ARE WITH TERMINAL BLOCK CONNECTWELL MAKE TYPE STH3.

| | | | | | | |
|----------|--------------------------|-------------------|-----------------|-----------|---------------------------|-----------|
| Revision | END CUSTOMER : APTRANSCO | DRAWN, MB | CHECKED, TT | APPRD, UP | REF. DRG.NO: 1HYB990148-3 | 245 KV CB |
| A | 20180927 | ABB India Limited | 1HYB990148-0003 | 18 | 1 | TOTAL SH |
| | | | | | | SH. NO. |
| | | | | | | 1 |

We reserve all rights in this document and in the information contained here in reproduction, use or disclosure to third parties without express authority is strictly forbidden @ ABB.

Revision Details



APPROVED
 CHIEF ENGINEER
 CONSTRUCTION
 APTRANSCO.

245 kV CB
 DC SUPERVISION (CLOSING)
 REF. DRG. NO.: 1HYB990148-3
 1HYB990148-0003
 TOTAL SH 18
 SH. NO. 2

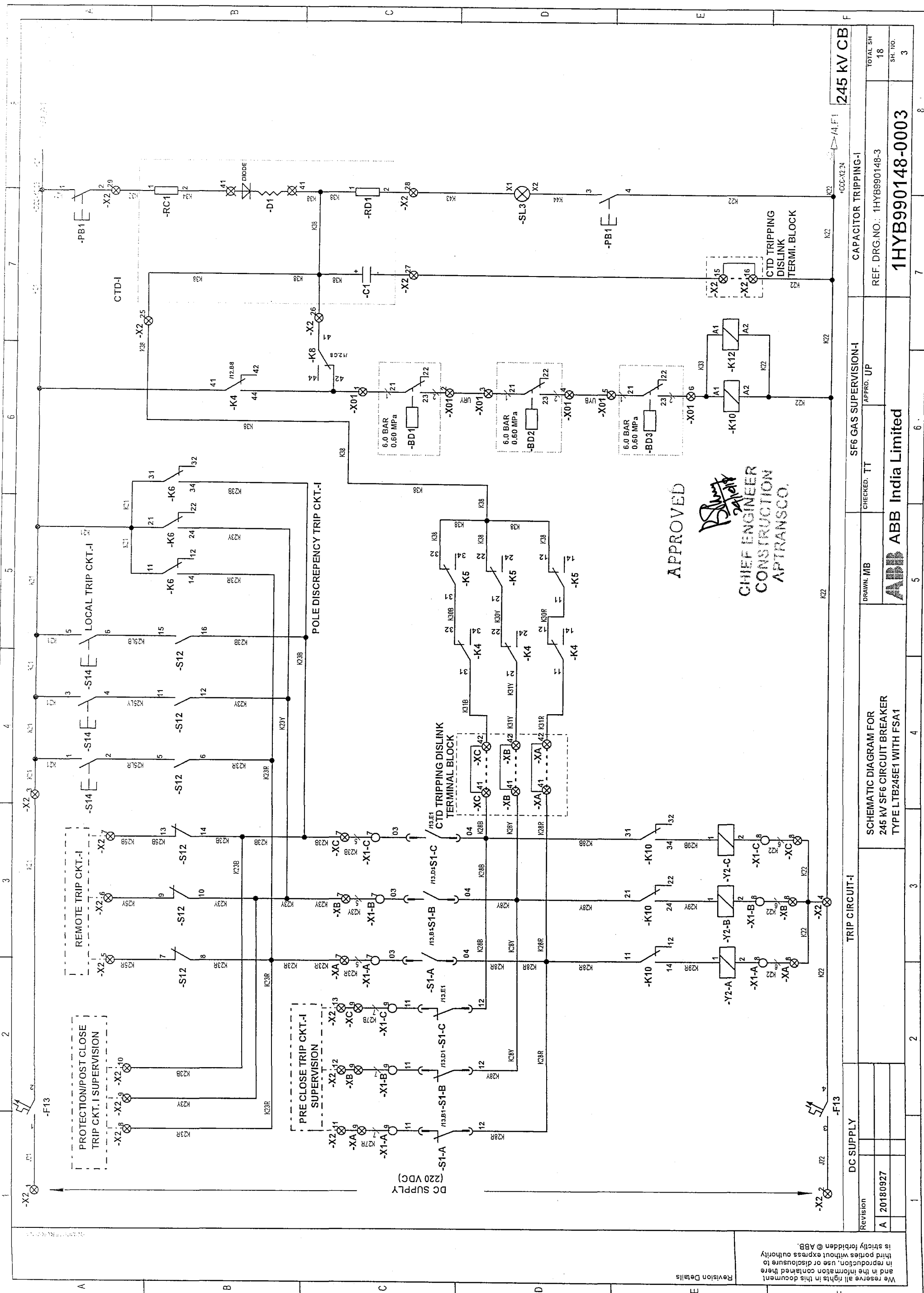
ANTI PUMPING
 CHECKED: TT
 APPROD. UP
 DRAWN: MB

ABB India Limited

CLOSE CIRCUIT
 SCHEMATIC DIAGRAM FOR
 245 KV SF6 CIRCUIT BREAKER
 TYPE LTB245E1 WITH FSA1

DC SUPPLY
 Revision
 A 20180927

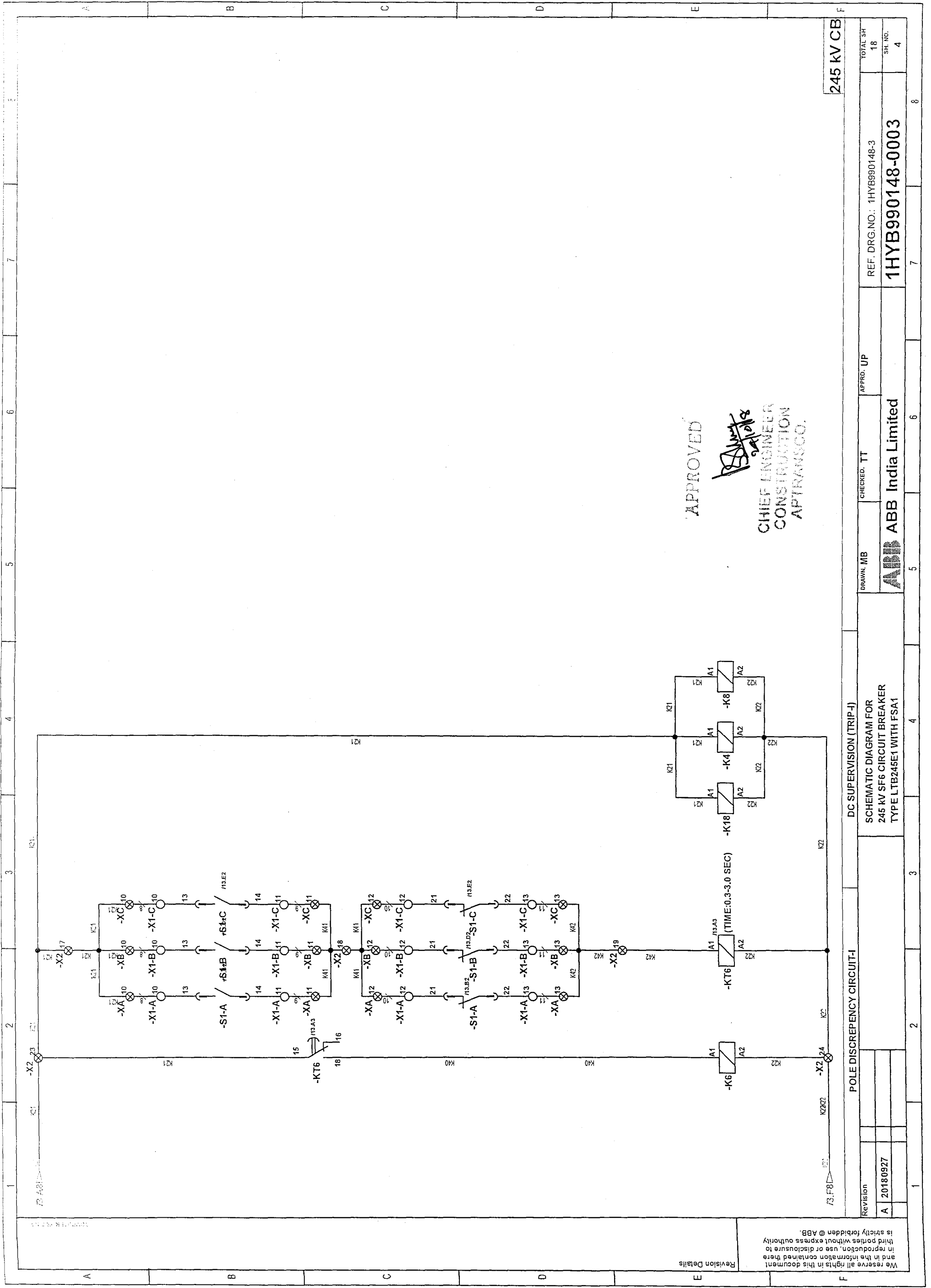
Revision Details
 We reserve all rights in this document and in the information contained here and in the information contained here is strictly forbidden @ ABB.



APPROVED
[Signature]
CHIEF ENGINEER
CONSTRUCTION
APTRANSCO.

| | | | | | |
|--|-----------|-------------------|--|-----------------------------|--|
| | 245 kV CB | | | | |
| DC SUPPLY | | TRIP CIRCUIT-I | | CAPACITOR TRIPPING-I | |
| DRAWN: MB | | CHECKED: TT | | APPROD. UP | |
| SCHEMATIC DIAGRAM FOR 245 kV SF6 CIRCUIT BREAKER TYPE LTB245E1 WITH FSA1 | | ABB India Limited | | REF. DRG. NO.: 1HYB990148-3 | |
| Revision A 20180927 | | | | TOTAL SH 18 | |
| | | | | SH. NO. 3 | |
| | | | | 1HYB990148-0003 | |
| | | | | 8 | |

We reserve all rights in this document and in the information contained here in reproduction, use or disclosure to third parties without express authority is strictly forbidden © ABB.



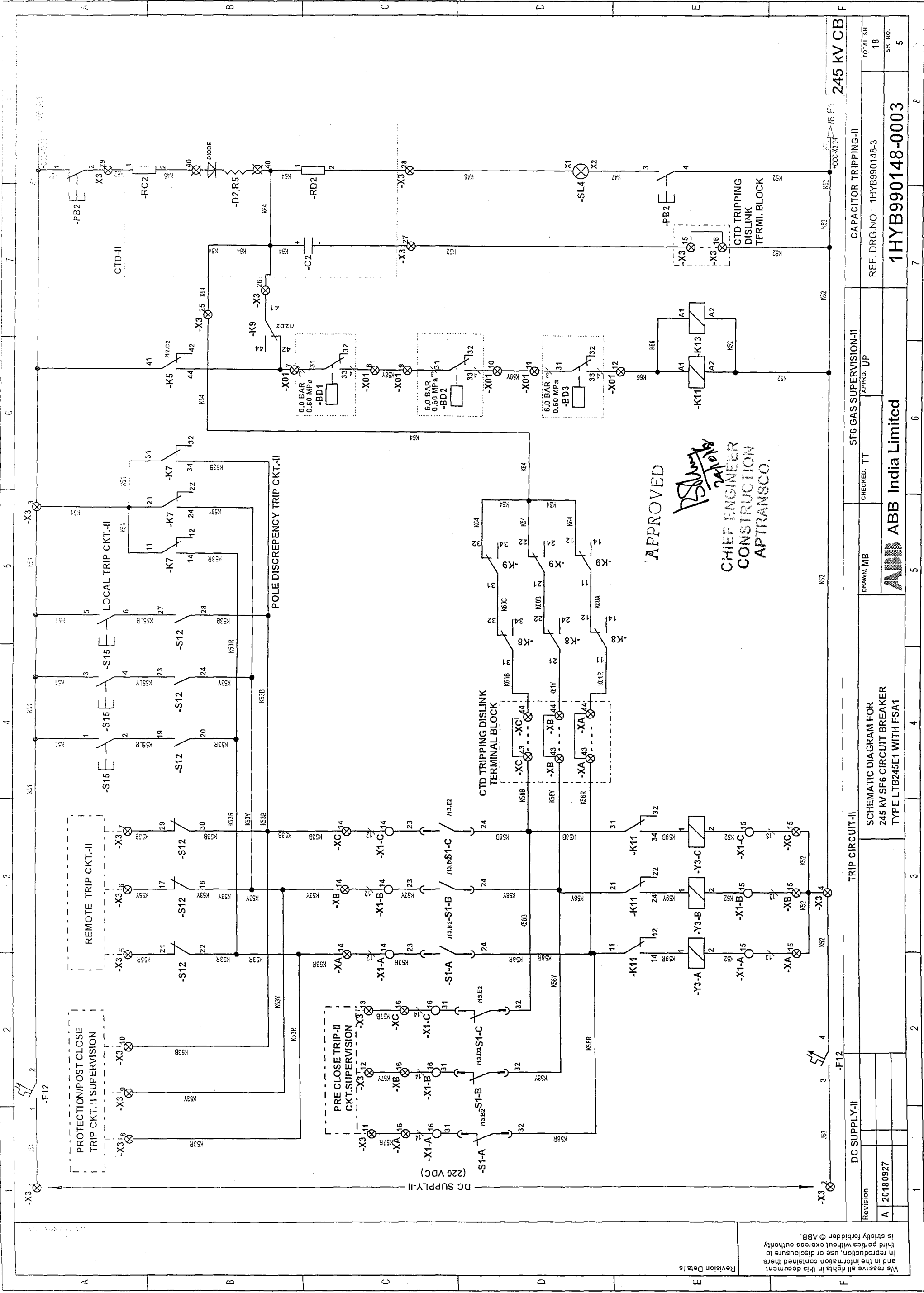
APPROVED
[Signature]
 CHIEF ENGINEER
 CONSTRUCTION
 APTRANSCO.

245 KV CB

| | | | | | | | |
|----------|----------|--|--|-----------------------------|--|----------|--|
| Revision | | DC SUPERVISION (TRIP-I) | | APPRO. UP | | TOTAL SH | |
| A | 20180927 | SCHEMATIC DIAGRAM FOR 245 KV SF6 CIRCUIT BREAKER TYPE LTB245E1 WITH FSA1 | | ABB India Limited | | 18 | |
| | | | | DRAWN: MB | | SH. NO. | |
| | | | | CHECKED: TT | | 4 | |
| | | | | REF. DRG. NO.: 1HYB990148-3 | | | |
| | | | | 1HYB990148-0003 | | | |
| | | | | 7 | | 8 | |

We reserve all rights in this document and in the information contained here in reproduction, use or disclosure to third parties without express authority is strictly forbidden © ABB.

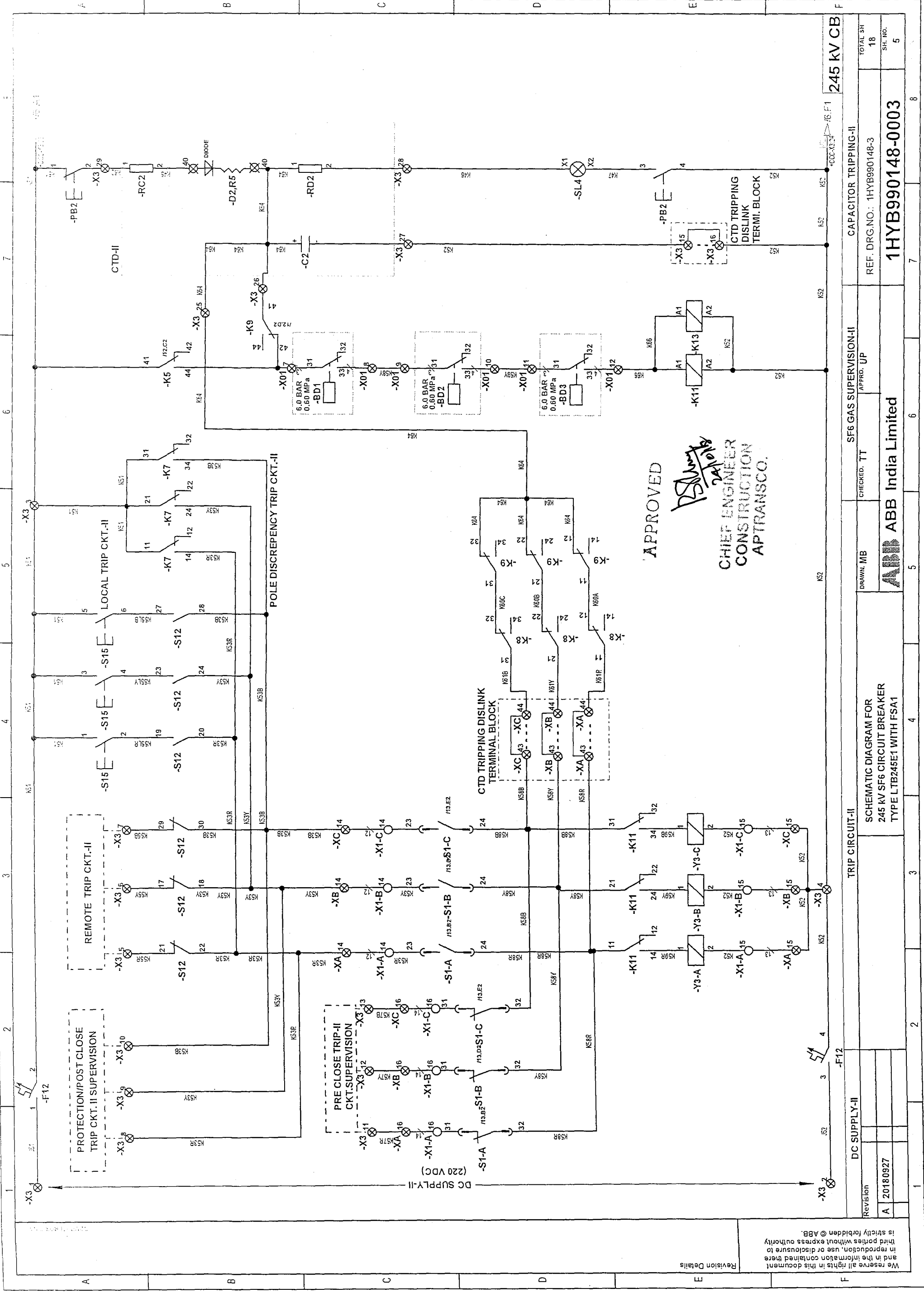
Revision Details



APPROVED
[Signature]
 24/10/18
**CHIEF ENGINEER
 CONSTRUCTION
 APTRANSCO.**

We reserve all rights in this document and in the information contained here in reproduction, use or disclosure to third parties without express authority is strictly forbidden @ ABB.

| | | | | | | | | | |
|-------------------|----------|--------------|--|-----------------|--|------------------------|--|-----------------|--|
| Revision | | DC SUPPLY-II | | TRIP CIRCUIT-II | | CAPACITOR TRIPPING-II | | 245 kV CB | |
| A | 20180927 | | | | | | | | |
| DRAWN: MB | | | | CHECKED: TT | | SF6 GAS SUPERVISION-II | | APPRD. UP | |
| ABB India Limited | | | | 1HYB990148-3 | | REF. DRG. NO. | | TOTAL SR | |
| | | | | | | | | 18 | |
| | | | | | | | | SK. NO. | |
| | | | | | | | | 5 | |
| | | | | | | | | 1HYB990148-0003 | |
| | | | | | | | | 7 | |
| | | | | | | | | 8 | |

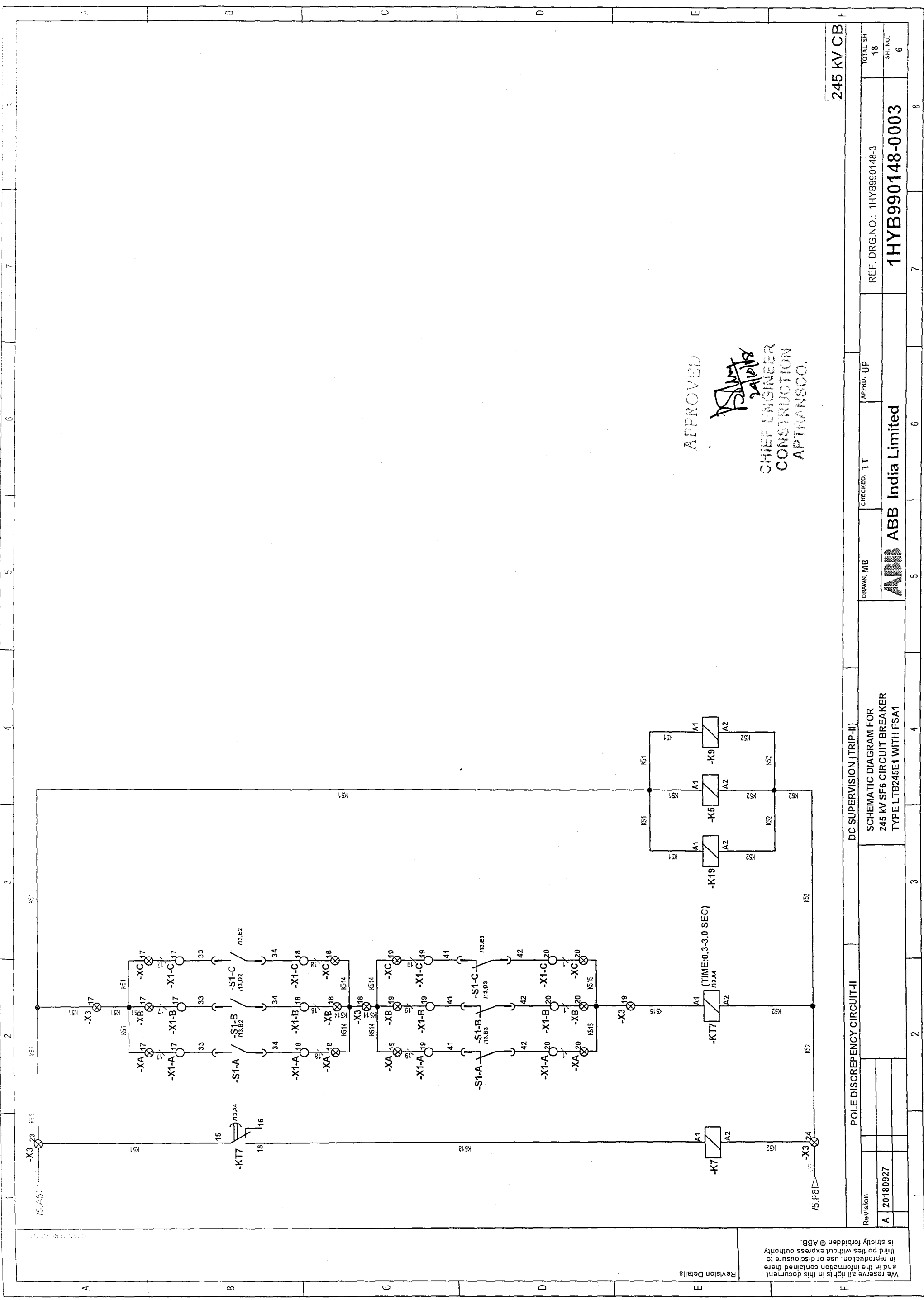


APPROVED
PS...
**CHIEF ENGINEER
 CONSTRUCTION
 APTRANSCO.**

| | | | | | | | | | | | |
|-------------|--|--------------|--|-----------------|--|------------------------|--|--|--|-------------|--|
| Revision | | DC SUPPLY-II | | TRIP CIRCUIT-II | | SF6 GAS SUPERVISION-II | | CAPACITOR TRIPPING-II | | 245 kV CB | |
| A 2018 0927 | | | | | | CHECKED: TT | | REF. DRG. NO.: 1HYB990148-3 | | TOTAL SH 18 | |
| | | | | | | DRAWN: MB | | 1HYB990148-0003 | | SH. NO. 5 | |
| | | | | | | APPROD. UP | | ABB India Limited | | 8 | |
| | | | | | | | | SCHEMATIC DIAGRAM FOR 245 kV SF6 CIRCUIT BREAKER TYPE LTB245E1 WITH FSA1 | | 7 | |

We reserve all rights in this document and in the information contained there in reproduction, use or disclosure to third parties without express authority is strictly forbidden © ABB.

Revision Details



APPROVED

 CHIEF ENGINEER
 CONSTRUCTION
 APTRANSCO.

245 kV CB
 TOTAL SH 18
 SH. NO. 6

REF. DRG. NO.: 1HYB990148-3
1HYB990148-0003

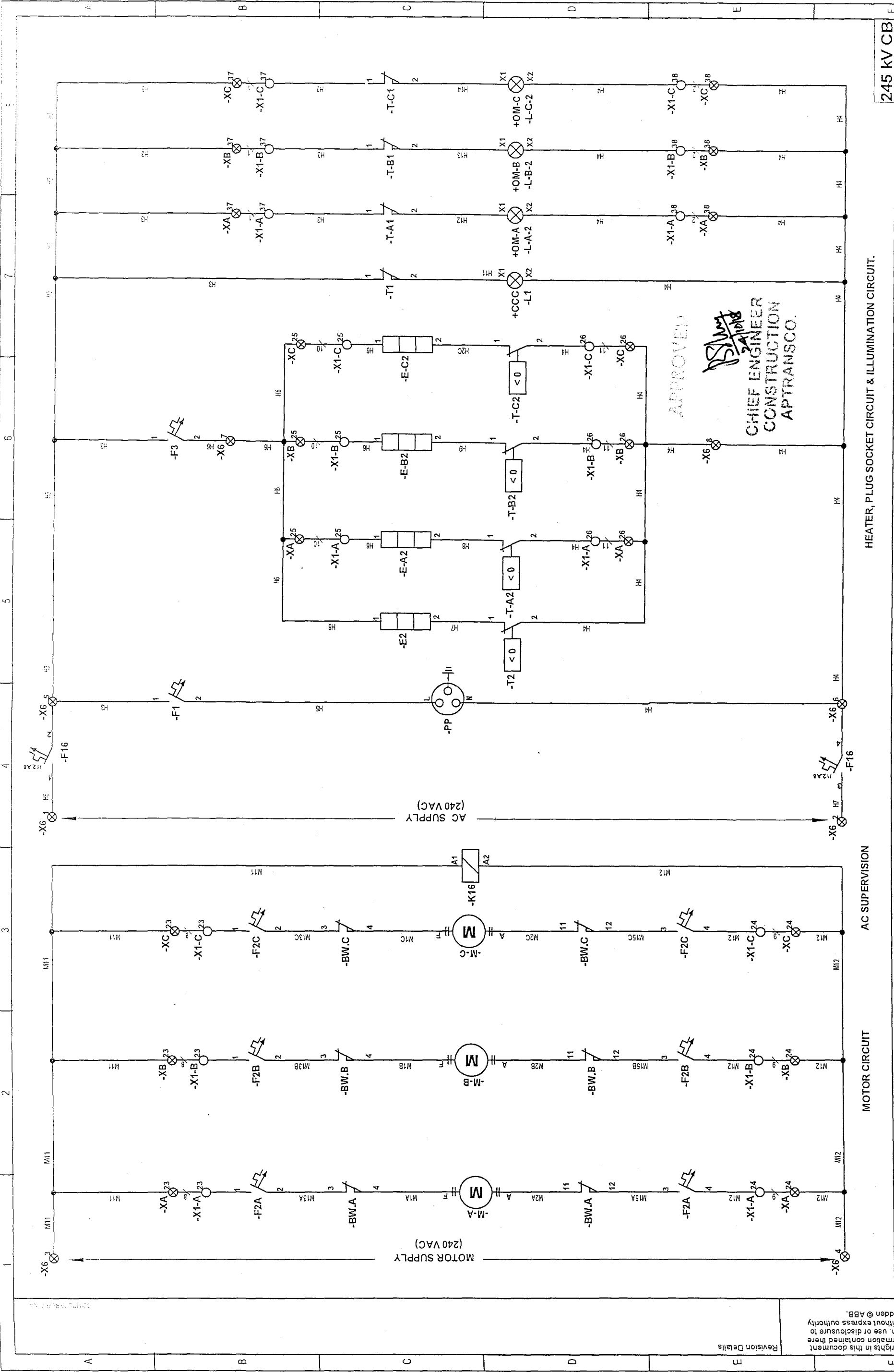
APPROD. UP
 CHECKED. TT
 DRAWN. MB
ABB India Limited

DC SUPERVISION (TRIP-II)
 SCHEMATIC DIAGRAM FOR
 245 KV SF6 CIRCUIT BREAKER
 TYPE LTB245E1 WITH FSA1

| Revision | |
|----------|----------|
| A | 20180927 |

We reserve all rights in this document and in the information contained here in reproduction, use or disclosure to third parties without express authority is strictly forbidden © ABB.

Revision Details



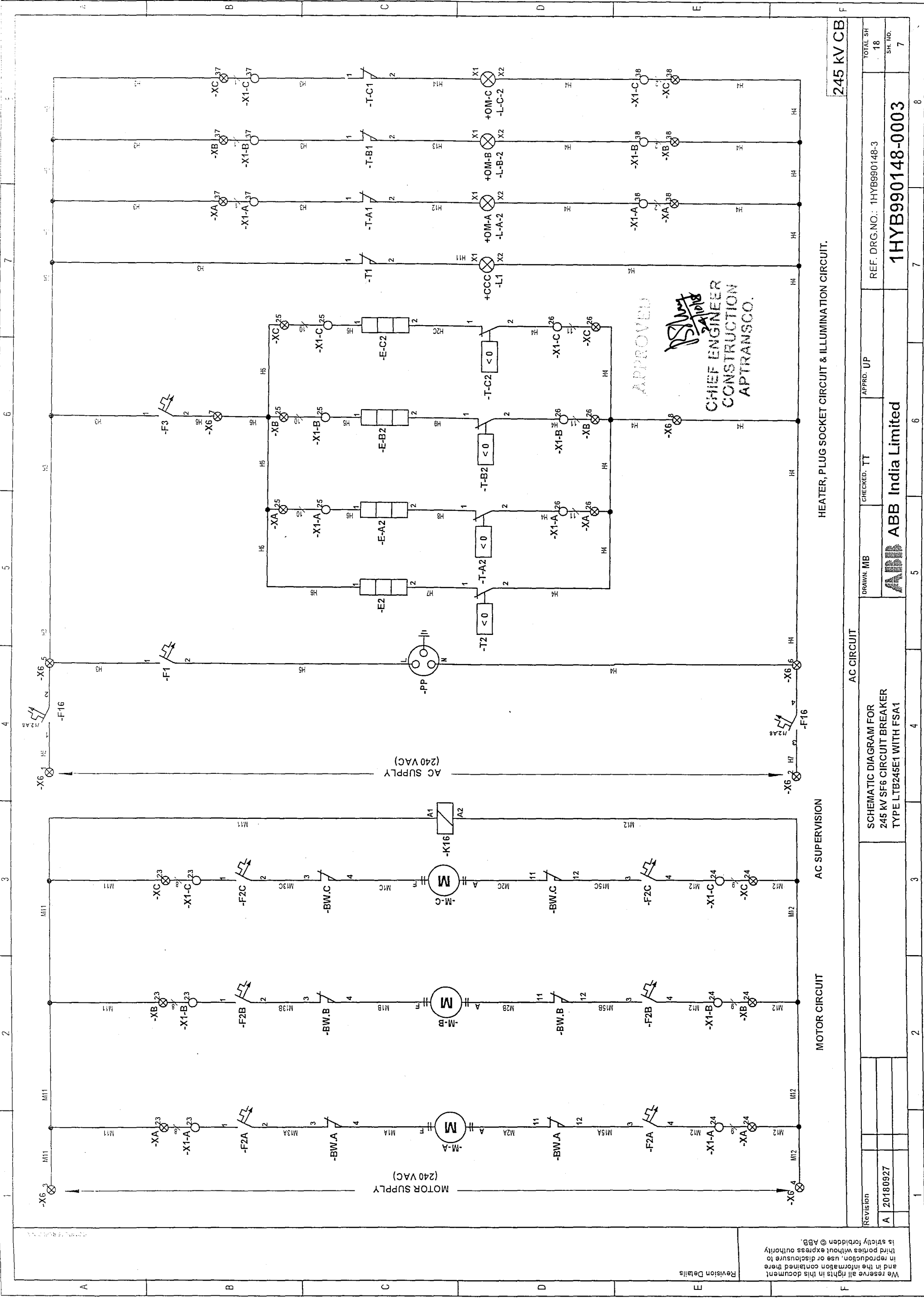
HEATER, PLUG SOCKET CIRCUIT & ILLUMINATION CIRCUIT.

245 kV CB

APPROVED
[Signature]
 CHIEF ENGINEER
 CONSTRUCTION
 APTRANSCO.

We reserve all rights in this document and in the information contained there in reproduction, use or disclosure to third parties without express authority is strictly forbidden @ ABB.

| | | | |
|-------------------|----------|----------------------------|----------|
| Revision | | APPRD. UP | TOTAL SH |
| A | 20180927 | CHECKED. TT | 18 |
| DRAWN. MB | | REF. DRG.NO.: 1HYB990148-3 | SH. NO. |
| ABB India Limited | | 1HYB990148-0003 | 7 |



We reserve all rights in this document and in the information contained here in reproduction, use or disclosure to third parties without express authority is strictly forbidden © ABB.

Revision Details

| Revision |
|------------|
| A 20180927 |

AC CIRCUIT
 SCHEMATIC DIAGRAM FOR
 245 KV SF6 CIRCUIT BREAKER
 TYPE LTB245E1 WITH FSA1

DRAWN: MB
 CHECKED: TT
 APPROD. UP

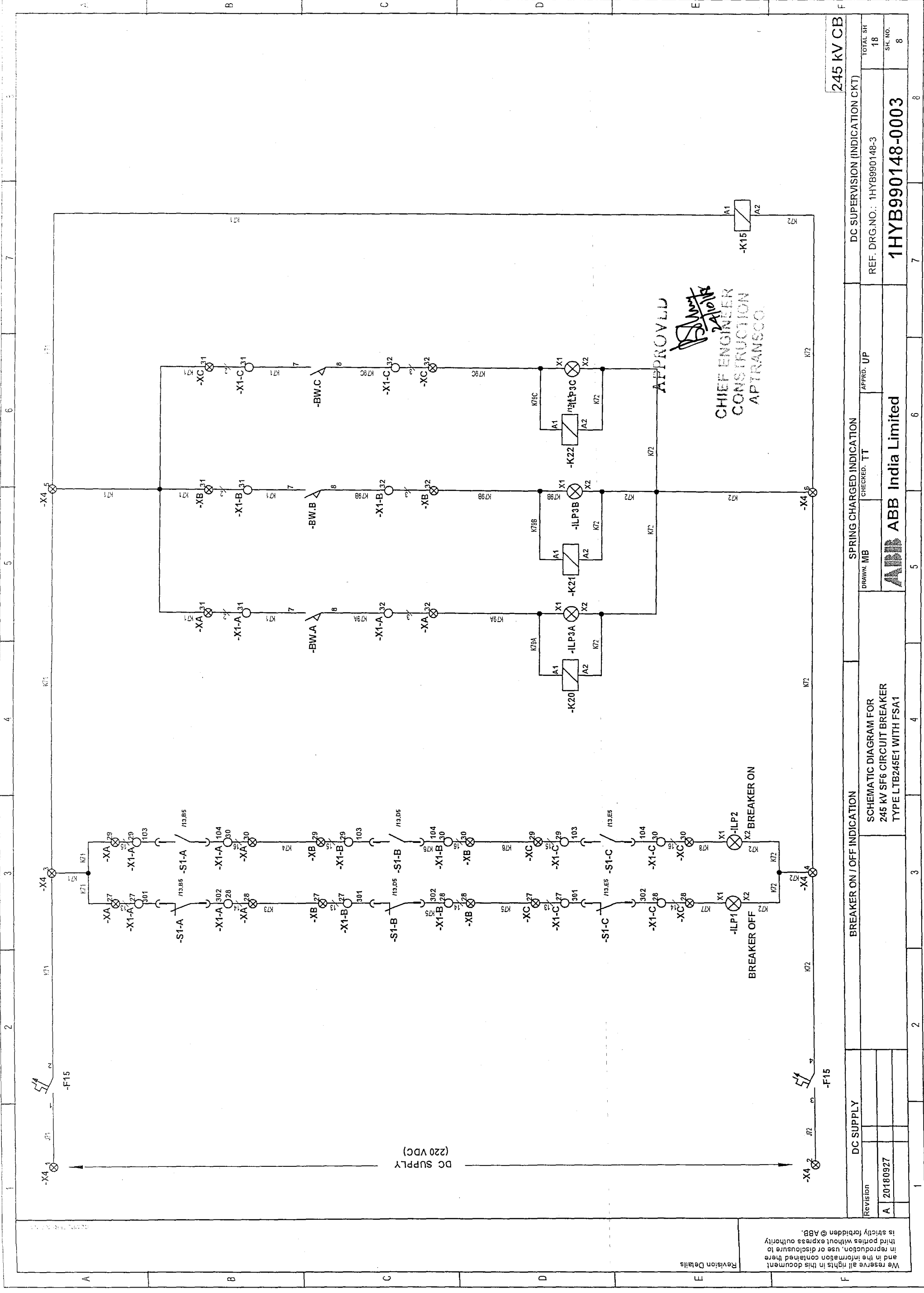
REF. DRG. NO.: 1HYB990148-3
ABB India Limited
 1HYB990148-0003

TOTAL SH 18
 SH. NO. 7

HEATER, PLUG SOCKET CIRCUIT & ILLUMINATION CIRCUIT.

245 KV CB

APPROVED
PS
 CHIEF ENGINEER
 CONSTRUCTION
 APTRANSCO.



We reserve all rights in this document and in the information contained here in reproduction, use or disclosure to third parties without express authority is strictly forbidden @ ABB.

Revision Details

| | |
|----------|----------|
| Revision | |
| A | 20180927 |

| | |
|---------------------------------|--|
| DC SUPPLY | |
| BREAKER ON / OFF INDICATION | |
| SPRING CHARGED INDICATION | |
| DC SUPERVISION (INDICATION CKT) | |

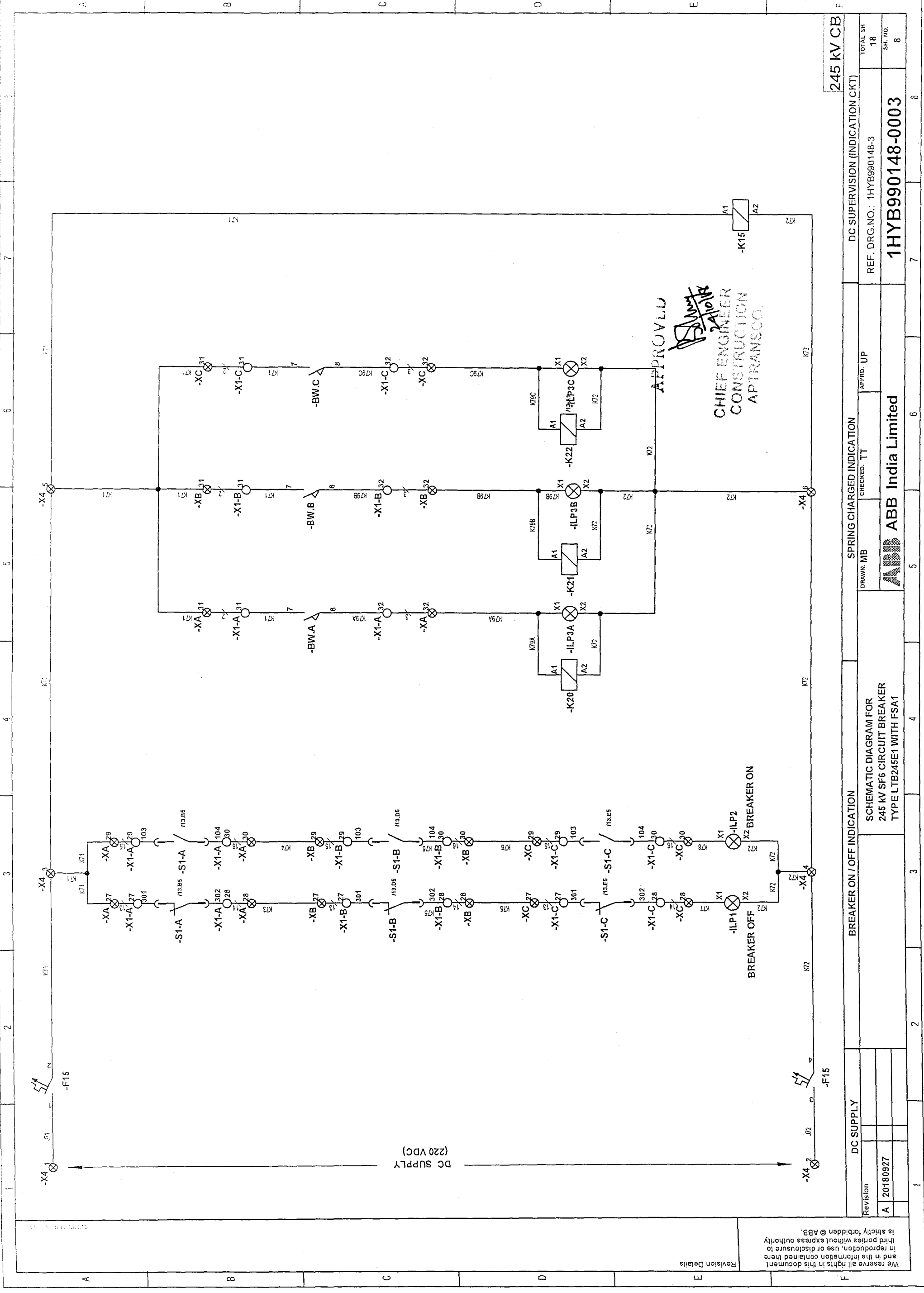
| | |
|--|--------------|
| SCHEMATIC DIAGRAM FOR 245 KV SF6 CIRCUIT BREAKER TYPE LTB245E1 WITH FSA1 | |
| DRAWN: MB | APPRD: UP |
| ABB India Limited | |
| REF. DRG. NO.: 1HYB990148-3 | TOTAL SH: 18 |
| 1HYB990148-003 | SH. NO.: 8 |

245 KV CB

CHIEF ENGINEER
CONSTRUCTION
APTRANSCO.

APPROVED

[Signature]



245 kV CB

DC SUPERVISION (INDICATION CKT)
 REF. DRG. NO.: 1HYB990148-3

SPRING CHARGED INDICATION
 DRAWN: MB
 CHECKED: TT
 APPR'D: UP

BREAKER ON / OFF INDICATION
 SCHEMATIC DIAGRAM FOR
 245 kV SF6 CIRCUIT BREAKER
 TYPE LTB245E1 WITH FSA1

DC SUPPLY
 Revision
 A | 20180927

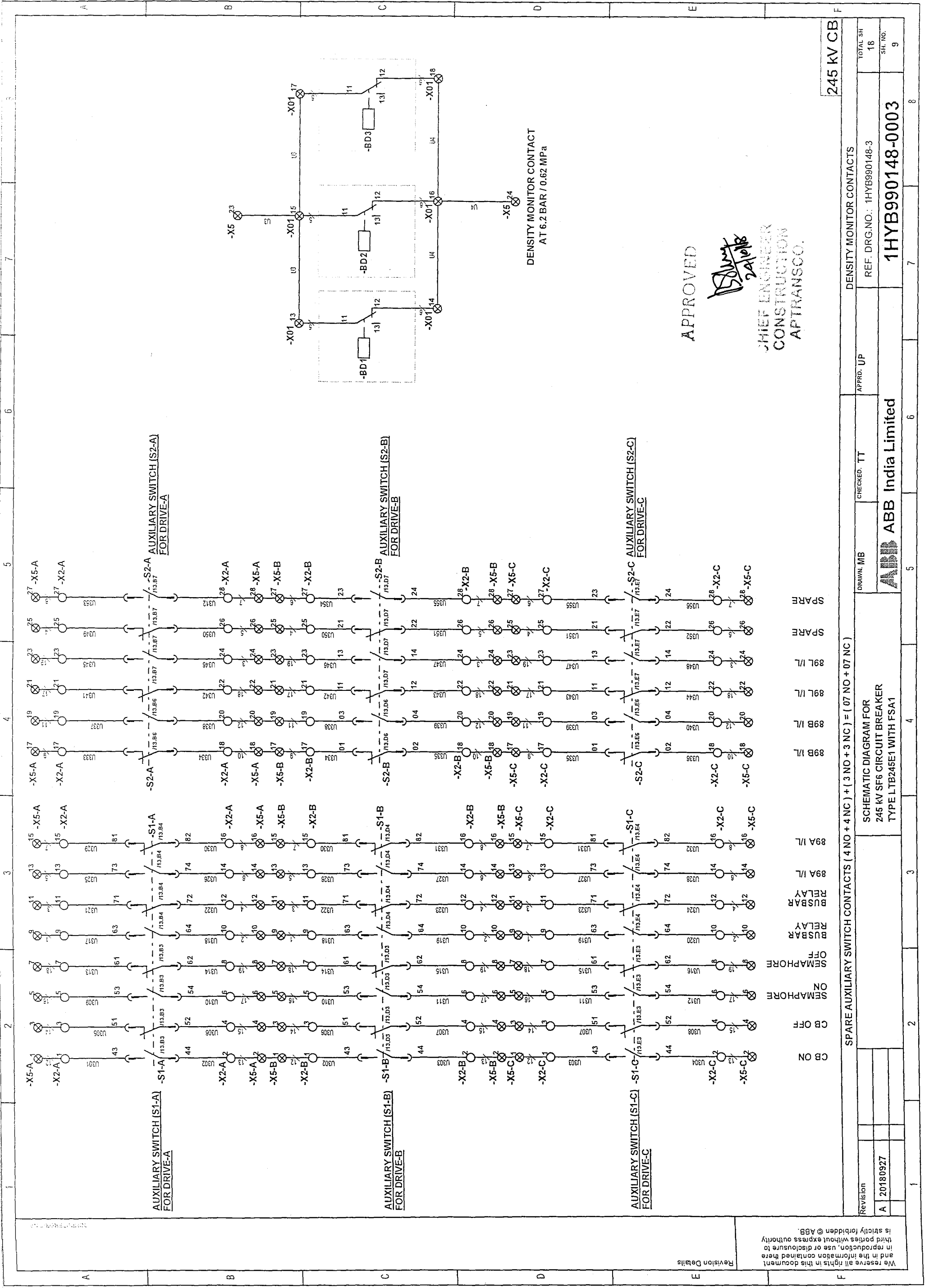
TOTAL SH
 18
 SH. NO.
 8

ABB India Limited

APPROVED
 CHIEF ENGINEER
 CONSTRUCTION
 APTRANSCO

We reserve all rights in this document and in the information contained here in reproduction, use or disclosure to third parties without express authority is strictly forbidden © ABB.

Revision Details



APPROVED

[Signature]
 CHIEF ENGINEER
 CONSTRUCTION
 APTRANSCO.

| |
|----------------|
| 245 KV CB |
| TOTAL SH 18 |
| SH. NO. 9 |

DENSITY MONITOR CONTACTS
 REF. DRG.NO.: 1HYB990148-3

APPRD. UP

CHECKED. TT
 DRAWN. MB
ABB ABB India Limited

SCHEMATIC DIAGRAM FOR
 245 KV SF6 CIRCUIT BREAKER
 TYPE LTB245E1 WITH FSA1

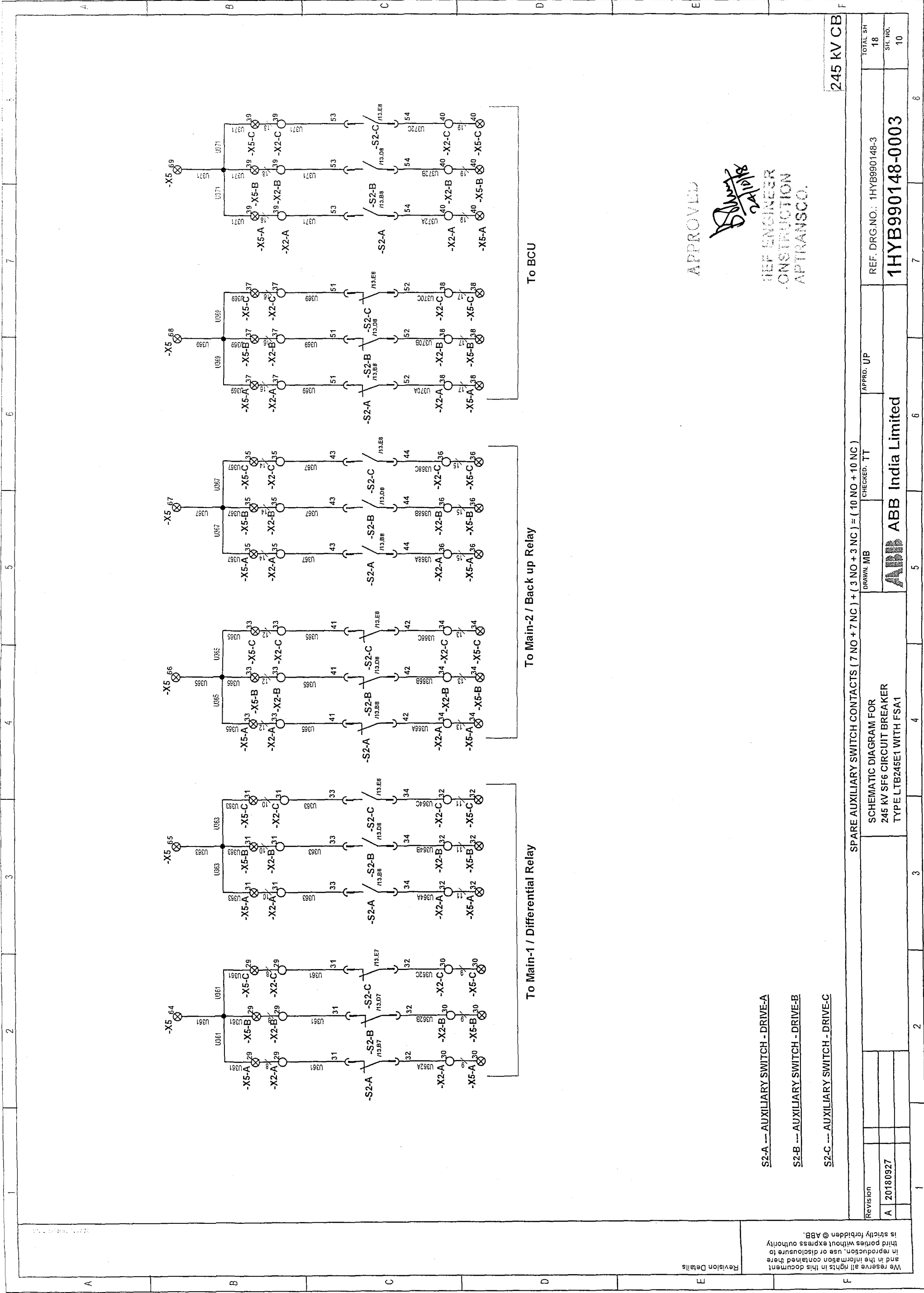
SPARE AUXILIARY SWITCH CONTACTS (4 NO + 4 NC) + (3 NO + 3 NC) + (07 NO + 07 NC)

| | |
|----------|----------|
| Revision | |
| A | 20180927 |

We reserve all rights in this document and in the information contained here in reproduction, use or disclosure to third parties without express authority is strictly forbidden © ABB.

Revision Details

| | | | | | | | |
|---|---|---|---|---|---|---|---|
| 1 | 2 | 3 | 4 | 5 | 6 | 7 | 8 |
|---|---|---|---|---|---|---|---|



Revision Details

| | |
|----------|----------|
| Revision | |
| A | 20180927 |

We reserve all rights in this document and in the information contained here in reproduction, use or disclosure to third parties without express authority is strictly forbidden © ABB.

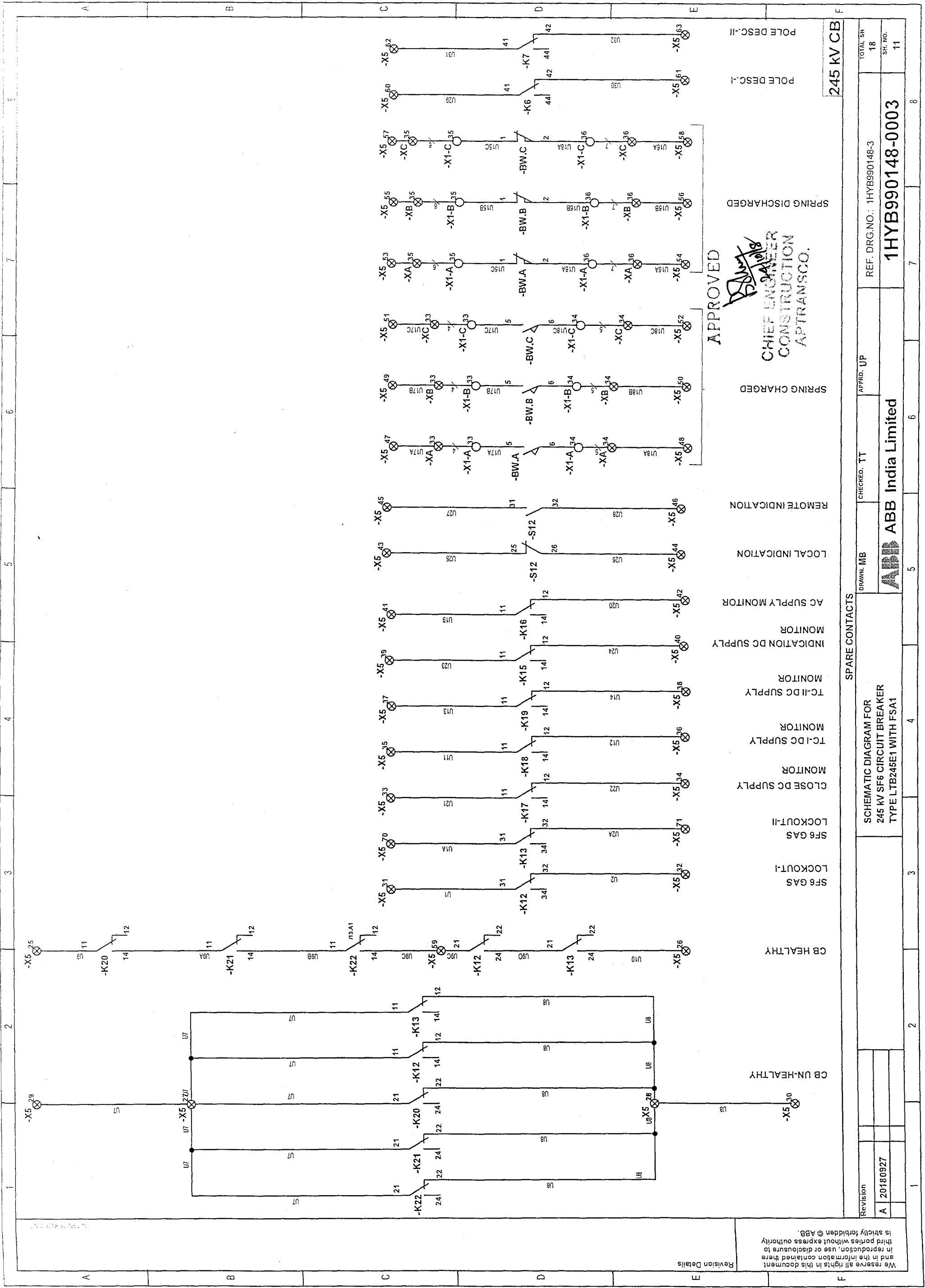
- S2-A -- AUXILIARY SWITCH - DRIVE-A
- S2-B -- AUXILIARY SWITCH - DRIVE-B
- S2-C -- AUXILIARY SWITCH - DRIVE-C

APPROVED

[Signature]

CHIEF ENGINEER
CONSTRUCTION
APTRANSOCO.

| | | | | | | | | | | | |
|----------|--|-----------|--|--|--|-------------------|--|-----------------------------|--|----------------|--|
| Revision | | DRAWN: MB | | CHECKED: TT | | APPRD: UP | | REF. DRG. NO.: 1HYB990148-3 | | TOTAL SH 18 | |
| A | | 20180927 | | SCHEMATIC DIAGRAM FOR 245 KV SF6 CIRCUIT BREAKER TYPE LTB245E1 WITH FSA1 | | ABB India Limited | | 1HYB990148-0003 | | SH. NO. 10 | |
| 1 | | 2 | | 3 | | 4 | | 5 | | 6 | |
| 7 | | 8 | | 9 | | 10 | | 11 | | 12 | |
| 13 | | 14 | | 15 | | 16 | | 17 | | 18 | |
| 19 | | 20 | | 21 | | 22 | | 23 | | 24 | |
| 25 | | 26 | | 27 | | 28 | | 29 | | 30 | |
| 31 | | 32 | | 33 | | 34 | | 35 | | 36 | |
| 37 | | 38 | | 39 | | 40 | | 41 | | 42 | |
| 43 | | 44 | | 45 | | 46 | | 47 | | 48 | |
| 49 | | 50 | | 51 | | 52 | | 53 | | 54 | |
| 55 | | 56 | | 57 | | 58 | | 59 | | 60 | |
| 61 | | 62 | | 63 | | 64 | | 65 | | 66 | |
| 67 | | 68 | | 69 | | 70 | | 71 | | 72 | |
| 73 | | 74 | | 75 | | 76 | | 77 | | 78 | |
| 79 | | 80 | | 81 | | 82 | | 83 | | 84 | |
| 85 | | 86 | | 87 | | 88 | | 89 | | 90 | |
| 91 | | 92 | | 93 | | 94 | | 95 | | 96 | |
| 97 | | 98 | | 99 | | 100 | | 101 | | 102 | |
| 103 | | 104 | | 105 | | 106 | | 107 | | 108 | |
| 109 | | 110 | | 111 | | 112 | | 113 | | 114 | |
| 115 | | 116 | | 117 | | 118 | | 119 | | 120 | |
| 121 | | 122 | | 123 | | 124 | | 125 | | 126 | |
| 127 | | 128 | | 129 | | 130 | | 131 | | 132 | |
| 133 | | 134 | | 135 | | 136 | | 137 | | 138 | |
| 139 | | 140 | | 141 | | 142 | | 143 | | 144 | |
| 145 | | 146 | | 147 | | 148 | | 149 | | 150 | |
| 151 | | 152 | | 153 | | 154 | | 155 | | 156 | |
| 157 | | 158 | | 159 | | 160 | | 161 | | 162 | |
| 163 | | 164 | | 165 | | 166 | | 167 | | 168 | |
| 169 | | 170 | | 171 | | 172 | | 173 | | 174 | |
| 175 | | 176 | | 177 | | 178 | | 179 | | 180 | |
| 181 | | 182 | | 183 | | 184 | | 185 | | 186 | |
| 187 | | 188 | | 189 | | 190 | | 191 | | 192 | |
| 193 | | 194 | | 195 | | 196 | | 197 | | 198 | |
| 199 | | 200 | | 201 | | 202 | | 203 | | 204 | |
| 205 | | 206 | | 207 | | 208 | | 209 | | 210 | |
| 211 | | 212 | | 213 | | 214 | | 215 | | 216 | |
| 217 | | 218 | | 219 | | 220 | | 221 | | 222 | |
| 223 | | 224 | | 225 | | 226 | | 227 | | 228 | |
| 229 | | 230 | | 231 | | 232 | | 233 | | 234 | |
| 235 | | 236 | | 237 | | 238 | | 239 | | 240 | |
| 241 | | 242 | | 243 | | 244 | | 245 | | 246 | |
| 247 | | 248 | | 249 | | 250 | | 251 | | 252 | |
| 253 | | 254 | | 255 | | 256 | | 257 | | 258 | |
| 259 | | 260 | | 261 | | 262 | | 263 | | 264 | |
| 265 | | 266 | | 267 | | 268 | | 269 | | 270 | |
| 271 | | 272 | | 273 | | 274 | | 275 | | 276 | |
| 277 | | 278 | | 279 | | 280 | | 281 | | 282 | |
| 283 | | 284 | | 285 | | 286 | | 287 | | 288 | |
| 289 | | 290 | | 291 | | 292 | | 293 | | 294 | |
| 295 | | 296 | | 297 | | 298 | | 299 | | 300 | |
| 301 | | 302 | | 303 | | 304 | | 305 | | 306 | |
| 307 | | 308 | | 309 | | 310 | | 311 | | 312 | |
| 313 | | 314 | | 315 | | 316 | | 317 | | 318 | |
| 319 | | 320 | | 321 | | 322 | | 323 | | 324 | |
| 325 | | 326 | | 327 | | 328 | | 329 | | 330 | |
| 331 | | 332 | | 333 | | 334 | | 335 | | 336 | |
| 337 | | 338 | | 339 | | 340 | | 341 | | 342 | |
| 343 | | 344 | | 345 | | 346 | | 347 | | 348 | |
| 349 | | 350 | | 351 | | 352 | | 353 | | 354 | |
| 355 | | 356 | | 357 | | 358 | | 359 | | 360 | |
| 361 | | 362 | | 363 | | 364 | | 365 | | 366 | |
| 367 | | 368 | | 369 | | 370 | | 371 | | 372 | |
| 373 | | 374 | | 375 | | 376 | | 377 | | 378 | |
| 379 | | 380 | | 381 | | 382 | | 383 | | 384 | |
| 385 | | 386 | | 387 | | 388 | | 389 | | 390 | |
| 391 | | 392 | | 393 | | 394 | | 395 | | 396 | |
| 397 | | 398 | | 399 | | 400 | | 401 | | 402 | |
| 403 | | 404 | | 405 | | 406 | | 407 | | 408 | |
| 409 | | 410 | | 411 | | 412 | | 413 | | 414 | |
| 415 | | 416 | | 417 | | 418 | | 419 | | 420 | |
| 421 | | 422 | | 423 | | 424 | | 425 | | 426 | |
| 427 | | 428 | | 429 | | 430 | | 431 | | 432 | |
| 433 | | 434 | | 435 | | 436 | | 437 | | 438 | |
| 439 | | 440 | | 441 | | 442 | | 443 | | 444 | |
| 445 | | 446 | | 447 | | 448 | | 449 | | 450 | |
| 451 | | 452 | | 453 | | 454 | | 455 | | 456 | |
| 457 | | 458 | | 459 | | 460 | | 461 | | 462 | |
| 463 | | 464 | | 465 | | 466 | | 467 | | 468 | |
| 469 | | 470 | | 471 | | 472 | | 473 | | 474 | |
| 475 | | 476 | | 477 | | 478 | | 479 | | 480 | |
| 481 | | 482 | | 483 | | 484 | | 485 | | 486 | |
| 487 | | 488 | | 489 | | 490 | | 491 | | 492 | |
| 493 | | 494 | | 495 | | 496 | | 497 | | 498 | |
| 499 | | 500 | | 501 | | 502 | | 503 | | 504 | |
| 505 | | 506 | | 507 | | 508 | | 509 | | 510 | |
| 511 | | 512 | | 513 | | 514 | | 515 | | 516 | |
| 517 | | 518 | | 519 | | 520 | | 521 | | 522 | |
| 523 | | 524 | | 525 | | 526 | | 527 | | 528 | |
| 529 | | 530 | | 531 | | 532 | | 533 | | 534 | |
| 535 | | 536 | | 537 | | 538 | | 539 | | 540 | |
| 541 | | 542 | | 543 | | 544 | | 545 | | 546 | |
| 547 | | 548 | | 549 | | 550 | | 551 | | 552 | |
| 553 | | 554 | | 555 | | 556 | | 557 | | 558 | |
| 559 | | 560 | | 561 | | 562 | | 563 | | 564 | |
| 565 | | 566 | | 567 | | 568 | | 569 | | 570 | |
| 571 | | 572 | | 573 | | 574 | | 575 | | 576 | |
| 577 | | 578 | | 579 | | 580 | | 581 | | 582 | |
| 583 | | 584 | | 585 | | 586 | | 587 | | 588 | |
| 589 | | 590 | | 591 | | 592 | | 593 | | 594 | |
| 595 | | 596 | | 597 | | 598 | | 599 | | 600 | |
| 601 | | 602 | | 603 | | 604 | | 605 | | 606 | |
| 607 | | 608 | | 609 | | 610 | | 611 | | 612 | |
| 613 | | 614 | | 615 | | 616 | | 617 | | 618 | |
| 619 | | 620 | | 621 | | 622 | | 623 | | 624 | |
| 625 | | 626 | | 627 | | 628 | | 629 | | 630 | |
| 631 | | 632 | | 633 | | 634 | | 635 | | 636 | |
| 637 | | 638 | | 639 | | 640 | | 641 | | 642 | |
| 643 | | 644 | | 645 | | 646 | | 647 | | 648 | |
| 649 | | 650 | | 651 | | 652 | | 653 | | 654 | |
| 655 | | 656 | | 657 | | 658 | | 659 | | 660 | |
| 661 | | 662 | | 663 | | 664 | | 665 | | 666 | |
| 667 | | 668 | | 669 | | 670 | | 671 | | 672 | |
| 673 | | 674 | | 675 | | 676 | | 677 | | 678 | |
| 679 | | 680 | | 681 | | 682 | | 683 | | 684 | |
| 685 | | 686 | | 687 | | 688 | | 689 | | 690 | |
| 691 | | 692 | | 693 | | 694 | | 695 | | 696 | |
| 697 | | 698 | | 699 | | 700 | | 701 | | 702 | |
| 703 | | 704 | | 705 | | 706 | | 707 | | 708 | |
| 709 | | 710 | | 711 | | 712 | | 713 | | 714 | |
| 715 | | 716 | | 717 | | 718 | | 719 | | 720 | |
| 721 | | 722 | | 723 | | 724 | | 725 | | 726 | |
| 727 | | 728 | | 729 | | 730 | | 731 | | 732 | |
| 733 | | 734 | | 735 | | 736 | | 737 | | 738 | |
| 739 | | 740 | | 741 | | 742 | | 743 | | 744 | |
| 745 | | 746 | | 747 | | 748 | | 749 | | 750 | |
| 751 | | 752 | | 753 | | 754 | | 755 | | 756 | |
| 757 | | 758 | | 759 | | 760 | | 761 | | 762 | |
| 763 | | 764 | | 765 | | 766 | | 767 | | 768 | |
| 769 | | 770 | | 771 | | 772 | | 773 | | 774 | |
| 775 | | 776 | | 777 | | 778 | | 779 | | 780 | |
| 781 | | 782 | | 783 | | 784 | | 785 | | 786 | |
| 787 | | 788 | | 789 | | 790 | | 791 | | 792 | |
| 793 | | 794 | | 795 | | 796 | | 797 | | 798 | |
| 799 | | 800 | | 801 | | 802 | | 803 | | 804 | |
| 805 | | 806 | | 807 | | 808 | | 809 | | 810 | |
| 811 | | 812 | | 813 | | 814 | | 815 | | 816 | |
| 817 | | 818 | | 819 | | 820 | | 821 | | 822 | |
| 823 | | 824 | | 825 | | 826 | | 827 | | 828 | |
| 829 | | 830 | | 831 | | 832 | | 833 | | 834 | |
| 835 | | 836 | | 837 | | 838 | | 839 | | 840 | |
| 841 | | 842 | | 843 | | 844 | | 845 | | 846 | |
| 847 | | 848 | | 849 | | 850 | | 851 | | 852 | |
| 853 | | 854 | | 855 | | 856 | | 857 | | 858 | |
| 859 | | 860 | | 861 | | 862 | | 863 | | 864 | |
| 865 | | 866 | | 867 | | 868 | | 869 | | 870 | |
| 871 | | 872 | | 873 | | 874 | | 875 | | 876 | |
| 877 | | 878 | | 879 | | 880 | | 881 | | 882 | |
| 883 | | 884 | | 885 | | 886 | | 8 | | | |



Revision Details

We reserve all rights in this document and in the information contained here in reproduction, use or disclosure to third parties without express authority is strictly forbidden © ABB.

| Revision |
|------------|
| A 20180927 |

SCHEMATIC DIAGRAM FOR
245 KV SF6 CIRCUIT BREAKER
TYPE LTB245E1 WITH FSA1

SPARE CONTACTS

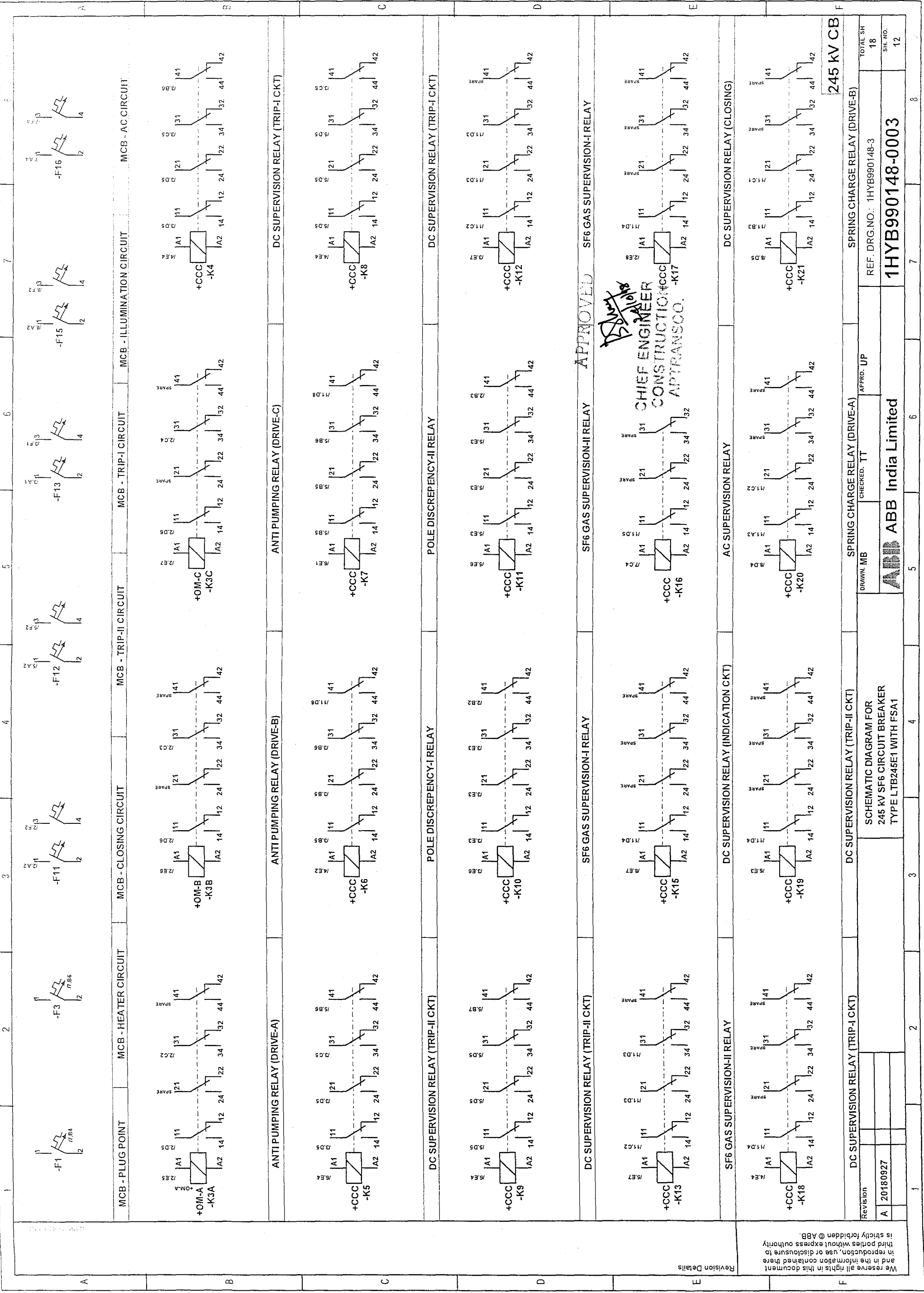
ABB India Limited

REF. DRG. NO.: 1HYB990148-3
1HYB990148-0003

245 KV CB

| | |
|----------|----|
| TOTAL SH | 18 |
| SH. NO. | 11 |

| | | | | | | | |
|---|---|---|---|---|---|---|---|
| 1 | 2 | 3 | 4 | 5 | 6 | 7 | 8 |
|---|---|---|---|---|---|---|---|



We reserve all rights in this document and in the information contained there in reproduction, use or disclosure to third parties without express authority is strictly forbidden © ABB.

Revision Details

245 kV CB
TOTAL SH 18
SH. NO. 12

SPRING CHARGE RELAY (DRIVE-B)
REF. DRG. NO.: 1HYB990148-3

1HYB990148-0003

ABB India Limited

SPRING CHARGE RELAY (DRIVE-A)
CHECKED: TT
APPROD. UP
DRAWN: MB

DC SUPERVISION RELAY (TRIP-II CKT)
SCHEMATIC DIAGRAM FOR
245 KV SF6 CIRCUIT BREAKER
TYPE LTB245E1 WITH FSA1

APPROVED

CHIEF ENGINEER
CONSTRUCTION
APTRANSCO.