

BILL OF MATERIALS

SL.NO	DESCREPTION	MATERIAL	NO. OFF
1	EYE HOOK	FORGED STEEL	1NO.
2	SUSPENSION CLAMP & KEEPER	M.C.I.	1 SET
3	Ø12 U BOLT & NUT	MILD STEEL	2+5
4	PLAIN WASHER (M12)	MIELD STEEL	6 NOS.
5	SPRING WASHER (M12)	SPRING STEEL	4 NOS.
6	BOLT NUTN & WASHER (M16)	MIELD STEEL	1+1+1
7	SPLIT PIN	BRASS/STAINLESS STEEL	1 NO.

TECHNICAL DATA

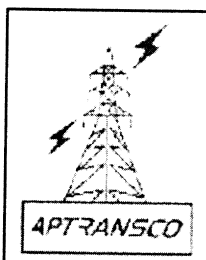
1. SLIP STRENGTH OF SUSPENSION CLAMP - 15KN TO 17KN.
2. ALL STEEL COMPONENTS EXCEPT SPRING WASHER HOT DIP GALVANISED AND SPRING WASHERS ELECTRO GALVANISED.

APPROVED FOR TURNKEY PROJECTS

[Signature] 9/11/2011

CHIEF ENGINEER / CONSTRUCTION-1
APTRANSCO/VIDYUTH SOUDHA/HYD.

TOLERANCES:	±5%
STANDARD:	IS-2486 PART-I
U.T.S.:	5500 KGS

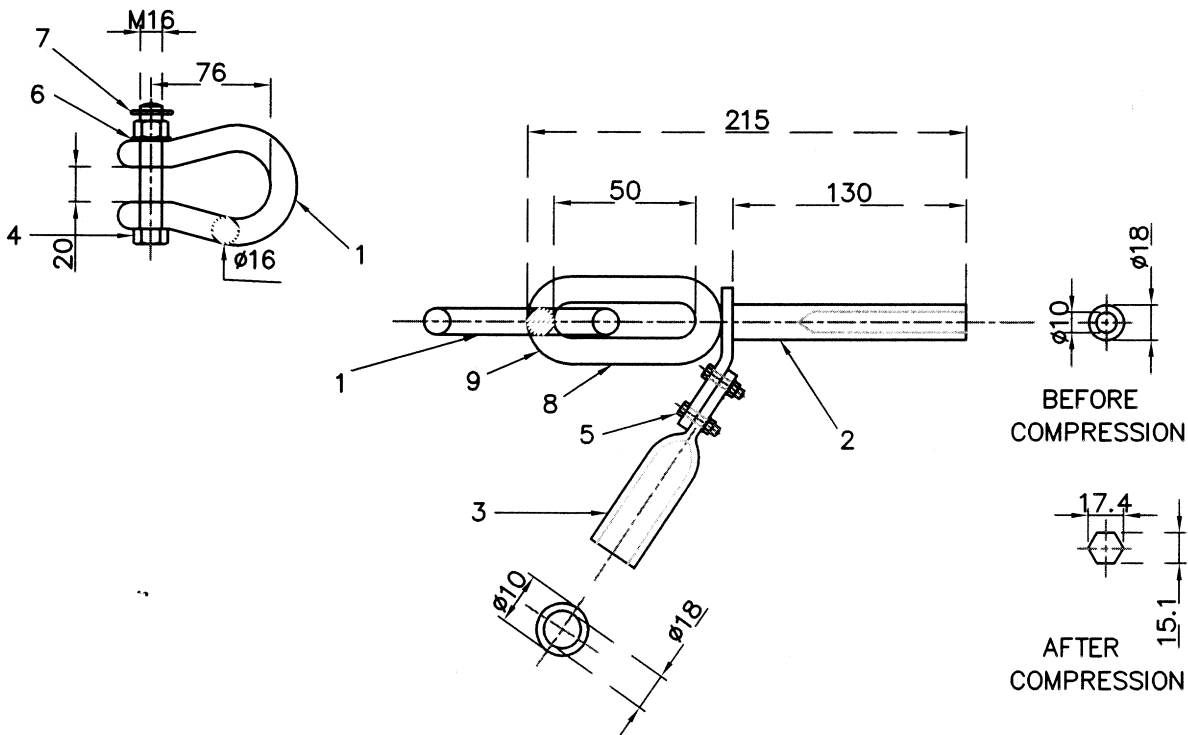


STANDARDISED DRAWING FOR EARTHWIRE SUSPENSION ASSEMBLY
FOR 7/3.15mm. DIA. EARTHWIRE

STD/GTP-DWG/Approval No. 15 - 1 / Revision No. 0

Prepared & Approved during November - 2011

FOR HTGS WIRE



BILL OF MATERIALS

S.No	DESCREPTION	MATERIAL	QTY.
1	ANCHOR SHACKLE	FORGED STEEL	1NO.
2	DEAD END CLAMP	FORGED STEEL	1NO.
3	JUMPER	FORGED STEEL	1NO.
4	BOLT,NUT & WASHER(M16)	MILD STEEL	1NO.
5	BOLT,NUT & WASHER(M12)	MILD STEEL	2NOS.
6	SPRING WASHER	SPRING STEEL	2NOS.
7	SPLIT PIN	BRASS/STAINLESS STEEL	2NOS.

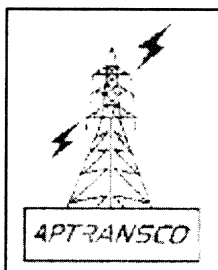
TECHNICAL DATA

1. SLIP STRENGTH OF DEAD END CLAMP AFTER COMPRESSION – MIN.95% OF EARTHWIRE U.T.S.
2. ALL FERROUS PARTS EXCEPT SPRING WASHER HOT DIP GALVANISED.
AND SPRING WASHERS ELECTRO GALVANISED
3. AFTER COMPRESSION DIMENSIONS ARE SHOWN EOR FIELD USE ONLY.

APPROVED FOR TURNKEY PROJECTS

AM 9/11/2011
CHIEF ENGINEER / CONSTRUCTION-1
APTRANSCO/VIDYUTH SOUDHA/HYD.

TOLERANCES:	±5%
STANDARD:	IS-2486 & 2633
U.T.S.:	AS ABOVE

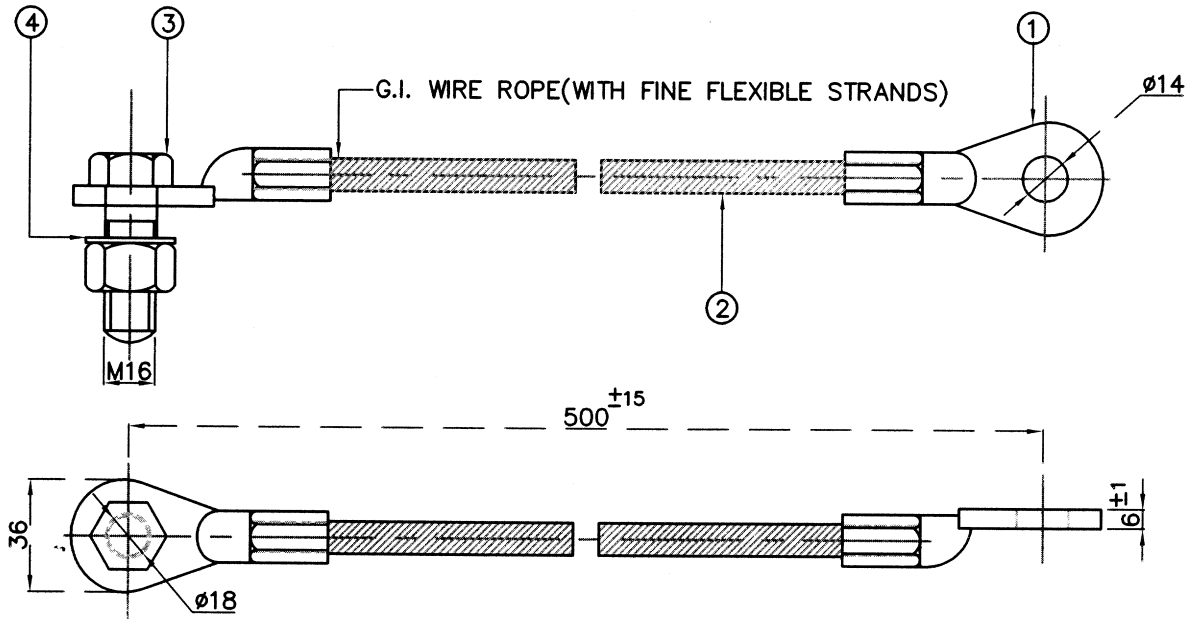


STANDARDISED DRAWING FOR EARTHWIRE TENSION ASSEMBLY
 FOR 7/3.15mm. EARTHWIRE

STD/GTP-DWG/Approval No. 15 - 2 / Revision No. 0

Prepared & Approved during November - 2011

FOR HTGS WIRE



BILL OF MATERIALS

SL.NO	DESCREPTION	MATERIAL	QTY.
1	CONNECTING SOCKET	MILD STEEL/AL	2NO.
2	FLEXIBLE WIRE.	MILD STEEL	1NO.
3	M16 BOLT & NUT	MILD STEEL	1NO.
4	SPRING WASHER	SPRING STEEL	1NO.

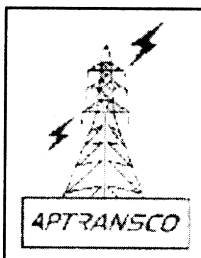
TECHNICAL DATA

1. CONNECTING SOCKETS COMPRESSED ON EACH END OF FLEXIBLE CABLE
2. ALL STEEL COMPONENTS EXCEPT SPRING WASHER HOT DIP GALVANISED AND SPRING WASHER ELECTRO GALVANISED.

APPROVED FOR TURNKEY PROJECTS

[Signature]
 CHIEF ENGINEER / CONSTRUCTION-1
 APTRANSCO/VIDYUTH SOUDHA/HYD.

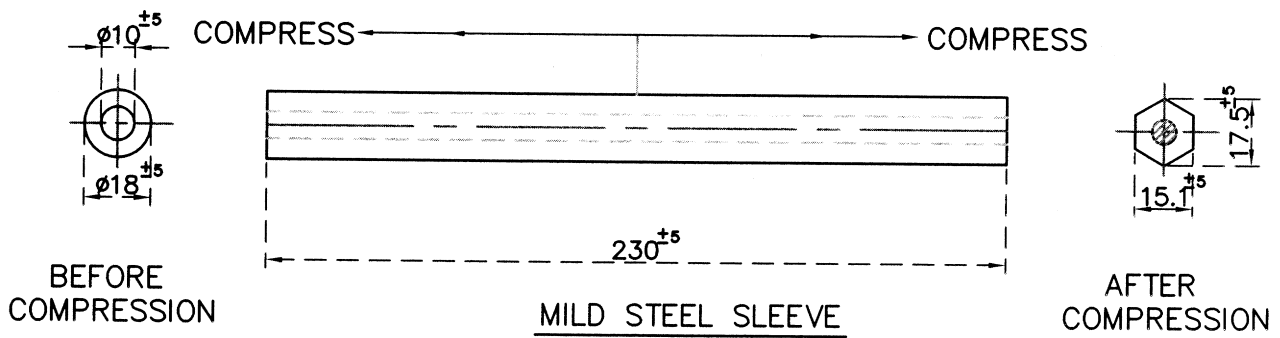
TOLERANCES: ±5%



STANDARDISED DRAWING FOR FLEXIBLE EARTH BOND

STD/GTP-DWG/Approval No. 15 - 3 / Revision No. 0

Prepared & Approved during November - 2011



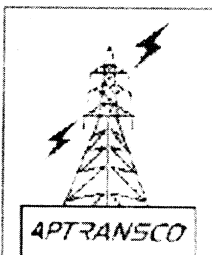
TECHNICAL DATA

1. MATERIAL :- MILD STEEL HOT DIP GALVANISED.
2. SLIP STRENGTH/FAILING LOAD – MINIMUM 95% OF EARTHWIRE U.T.S.

APPROVED FOR TURNKEY PROJECTS

M D 9/11/2011
 CHIEF ENGINEER / CONSTRUCTION-1
 APTRANSCO/VIDYUTH SOUDHA/HYD.

TOLERANCES:	±5%
STANDARD:	IS-2121 PART-II



STANDARDISED DRAWING FOR MIDSPAN COMPRESSION JOINT
 FOR EARTH WIRE 7/3.15mm DIA

STD/GTP-DWG/Approval No. 15 - 4 / Revision No. 0

Prepared & Approved during November - 2011