

Drawing approval subject to valid vendor registration

Item: 145kV CT

Ratio: 800-500/1-1-1A (3 C)

Creepage: 31mm/kV

Customer: APTransco, Andhra Pradesh

List of Standard Drawings/Documents:

Sl. No.	Description	Drawing/ Doc No.
1	General Arrangement	APTR-03.31.145J1
2	Rating Plate	APTR-03.31.145J2_REV No.01
3	Terminal Box GA	APTR-03.31.145J3_REV No.01
4	Sectional View	APTR-03.31.145J4_REV No.01
5	GTP	--

Variation of Tan Delta Value from 10KV $\mu\text{m}/\sqrt{3}$ shall be not exceed 15%.

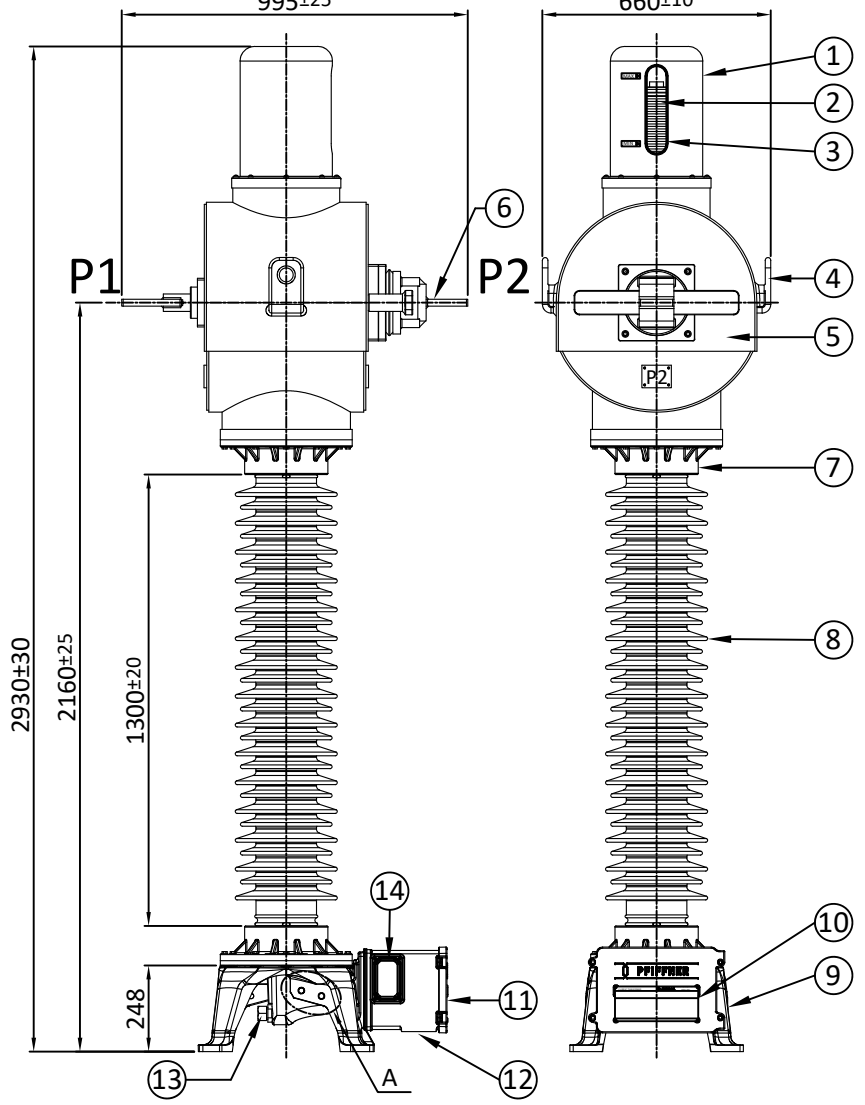
1. Minimum 300mm plinth shall be maintained for CT/PT/CVT/ Isolators/IVT in the substation during foundation works to ensure safe live to ground clearance as per IE rules.
2. Since the supply of terminal connectors is not in the scope of manufacturers as mentioned in the drawings. The EPC contractors shall be instructed to supply the same in line with CT/PT/CVT/Isolator /IVTs requirement and capability.

CHIEF ENGINEER/PROJECTS
APTRANSCO/VIS/Vijayawada

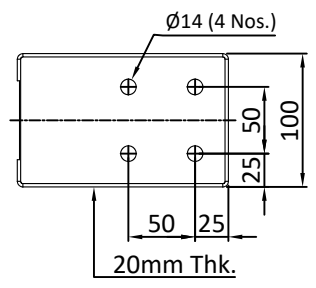
IF IN DOUBT ASK

NOTE:-1. Drawings approval subject to valid type test reports, to be checked during acceptance tests.
2. For EPC contractors only.

Drawing approval subject to valid vendor registration
995±25

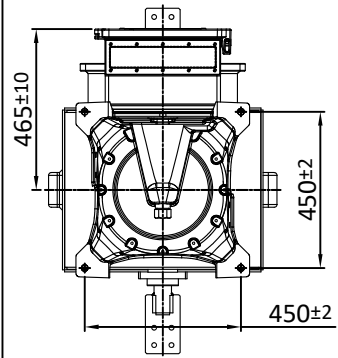
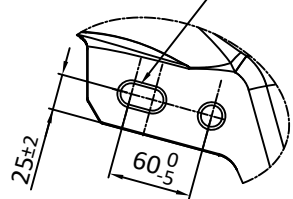


Variation of Tan Delta Value from 10KV um/sqrt 3 shall be not exceed 15%.



TERMINAL DETAIL

2Nos. of Ø15 Hole for Earthing Diagonally opposite



CT MOUNTING DETAIL

NO.	QTY.	DESCRIPTION	MATERIAL
01	01	BELLOWS COVER	ALUMINIUM
02	01	BELLOWS	STAINLESS STEEL
03	01	BELLOW LEVEL INDICATOR	POLYCARBONATE
04	02	LIFTING LUG	ALUMINIUM
05	01	HOUSING	ALUMINIUM
06	02	PRIMARY TERMINAL	ALUMINIUM
07	02	INSULATOR FLANGE	ALUMINIUM
08	01	INSULATOR	PORCELAIN
09	01	BASE	ALUMINIUM
10	01	RATING PLATE	ALUMINIUM
11	01	TERMINAL BOX	ALUMINIUM
12	01	GLAND PLATE	ALUMINIUM
13	01	OIL SAMPLING VALVE	STEEL GALVANISED
14	01	TAN DELTA MEASUREMENT TERMINAL	BRASS

TOTAL WEIGHT : 425 kg ±10%
TOTAL OIL WEIGHT : 110 kg ±10%
CREEPAGE DISTANCE : ≥4495 mm

CHIEF ENGINEER/PROJECTS
APTRANSCO/VS/Vijayawada

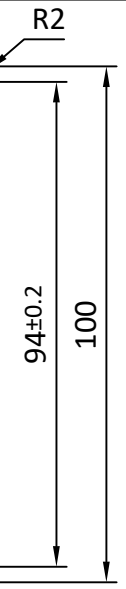
Customer : TRANSMISSION CORPORATION OF ANDRA PRADESH LTD.

REV.NO.	DESCRIPTION	APPV'D	REV. DATE		
GEN. TOL : NA	MATERIAL : NA				
WEIGHT : NA					
DRAWN	M.D.	08.03.2023	SPEC : NA	ALL DIMENSION ARE IN MM. UNLESS OTHRWISE SPECIFIED.	
CHK'D	M.C.	08.03.2023	FINISH : NA		SCALE : N.T.S.
APPV'D	R.P.	08.03.2023			SHEET SIZE : A3
PIFFNER Instrument Transformers Pvt.Ltd. NASHIK, INDIA		TITLE : GENERAL ARRANGEMENT 145KV CT		DWG NO. APTR-03.31.145J1	
		SHEET 1 OF 1		REV. NO. : 00	

This document must not be copied without our written permission and the content and nor be used for any unauthorised purpose. Contravention will be prosecuted. © PFIFFNER

IF IN DOUBT ASK

PFIFFNER Instrument Transformers Pvt.Ltd. NASHIK, INDIA		CURRENT TRANSFORMER			
CUSTOMER : TRANSMISSION CORPORATION OF ANDRA PRADESH LTD.			PO No. : -----		
YEAR	---	SPECIFICATION	IS 16227, IEC 61869	H.S.V.	145kv
TYPE	JOF 145 W	STC.	31.5 kA for 1S	INSULATION LEVEL	275 kv/650 kvp
FREQUENCY	50 Hz	Idyn	78.75 kAp	TOTAL CREEPAGE DISTANCE	≥ 4495mm
CORE NO.	1		2		3
RATIO	500/1	800/1	500/1	800/1	500/1 800/1
PRI. TERMINAL	P1-P2	P1-P2	P1-P2	P1-P2	P1-P2 P1-P2
SEC. TERMINAL	1S1-1S2	1S1-1S3	2S1-2S2	2S1-2S3	3S1-3S2 (SHORT 3S2-A) 3S1-3S3 (SHORT 3S3-A)
VA	20	20	--	--	20 20
CLASS	5P	5P	PX	PX	0.2S 0.2S
ALF/ISF	20	20	--	--	≤5 ≤5
Vk (V) min.	--	--	≥40I(Rct+10)		-- --
max Iexc at Vk (mA)	--	--	≤ 30mA		-- --
Rct (Ω)	--	--	--		-- --
Total weight		425 ±10% kg	Oil weight		110 ±10% kg



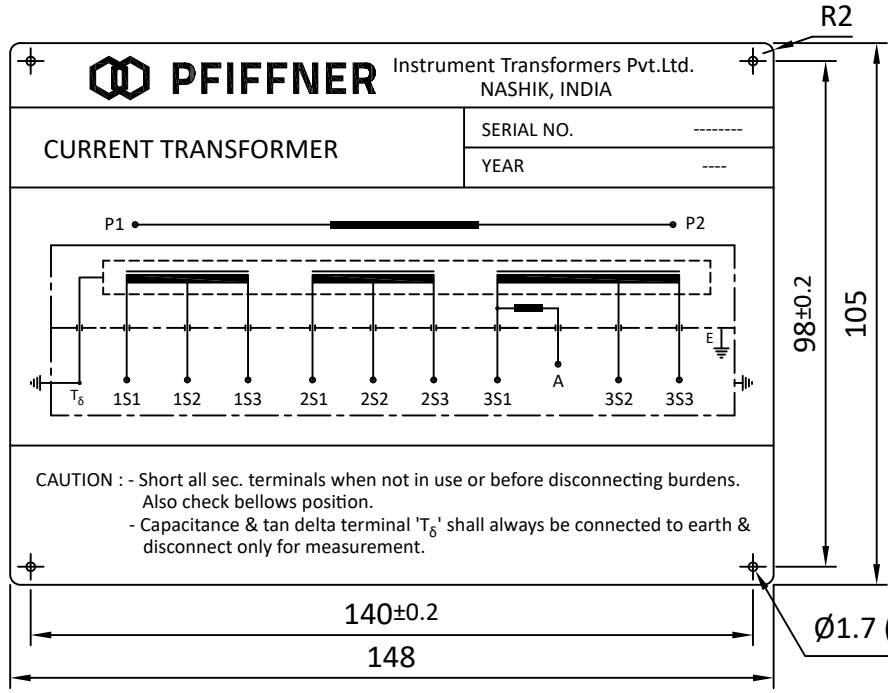
CHIEF ENGINEER/PROJECTS
APTRANSCO/VS/Vijayawada

234±0.2

240

Ø1.7 (04 Nos.)

Variation of Tan Delta Value from 10KV um/sqrt 3 shall be not exceed 15%.



140±0.2

148

Ø1.7 (04 Nos.)

NOTE:-1. Drawings approval subject to valid type test reports, to be checked during acceptance tests.
2. For EPC contractors only.

Drawing approval subject to valid vendor registration

Customer : TRANSMISSION CORPORATION OF ANDRA PRADESH LTD.

01	AS PER CUSTOMER COMMENTS.			CHM	18.04.2023
REV.NO.	DESCRIPTION			APPV'D	REV. DATE
GEN. TOL : NA		MATERIAL : 1mm thick Aluminium metal photo			
WEIGHT : NA		SPEC : NA			
DRAWN	M.D.	09.03.2023	FINISH : NA	ALL DIMENSION ARE IN MM. UNLESS OTHRWISE SPECIFIED.	
CHK'D	M.C.	09.03.2023	FINISH : NA	SCALE : N.T.S.	
APPV'D	R.P.	09.03.2023	TITLE : RATING PLATE 145 kv CT		SHEET SIZE : A3
			TITLE : RATING PLATE 145 kv CT		DWG NO. APTR-03.31.145J2
			SHEET 1 OF 1		REV. NO. : 01

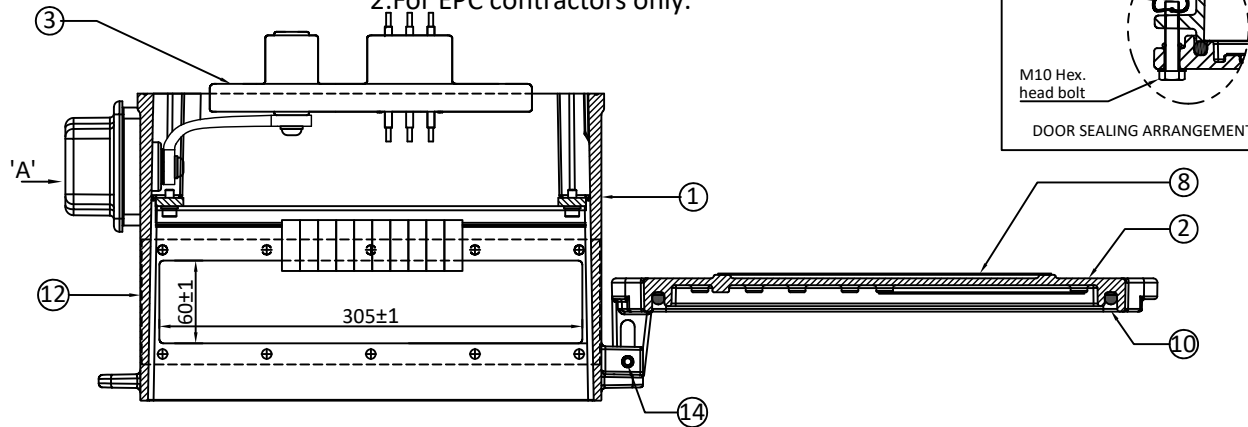
This document must not be copied without our written permission and the content and nor be used for any unauthorised purpose. Contravention will be prosecuted. PFIFFNER

NOTE:-1. Drawings approval subject to valid type test reports,

to be checked during acceptance tests.

2. For EPC contractors only.

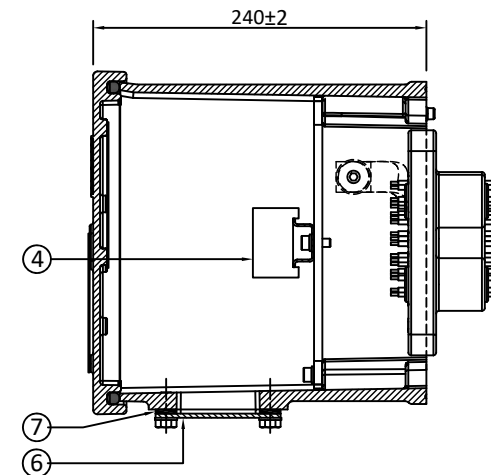
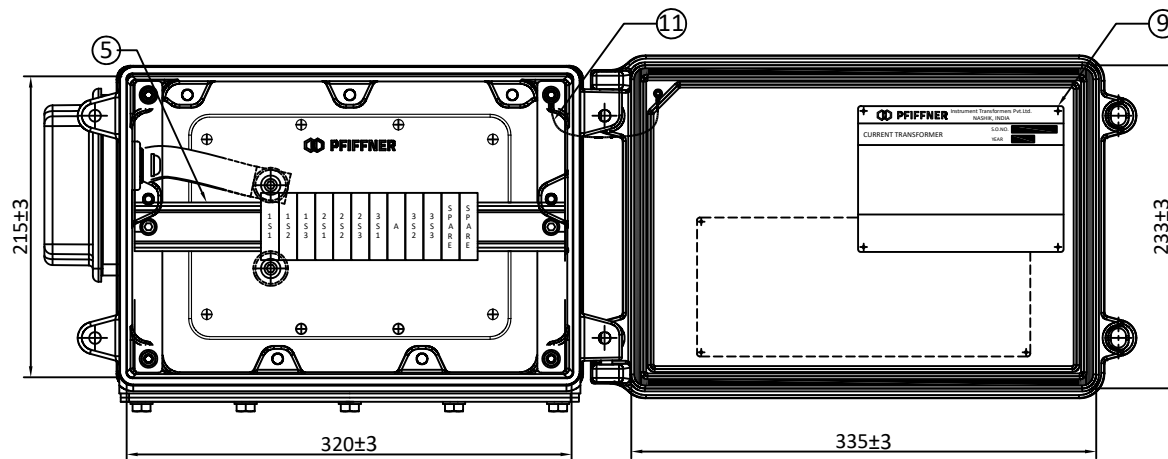
IF IN DOUBT ASK



SR.NO.	DESCRIPTION	QTY.	MATERIAL
1	TERMINAL BOX	1	ALUMINIUM
2	TERMINAL BOX DOOR	1	ALUMINIUM
3	SECONDARY LEAD OUT	1	EPOXY
4	STUD TYPE TERMINAL BLOCK (KBT M4)	10+2 SPARE	MAKE - ELMEX
5	TERMINAL CARRIER RAIL	2	STEEL
6	GLAND PLATE	1	ALUMINIUM
7	GLAND PLATE GASKET	1	NEOPRENE RUBBER
8	RATING PLATE	1	ALUMINIUM
9	SCHEMATIC DIAGRAM PLATE	1	ALUMINIUM
10	DOOR GASKET	1	EPDM RUBBER
11	DOOR EARTHING CABLE	1	PVC INSULATED COPPER CABLE
12	WARNING STICKER	1	ALUMINIUM
13	TAN DELTA (T _δ) MEASUREMENT TERMINAL	1	BRASS
14	HINGES	2	S.S. TENSION PIN
15	TAN DELTA EARTH LINK	1	COPPER (NICKEL PLATED)

Variation of Tan Delta Value from 10KV um/sqrt 3 shall be not exceed 15%.

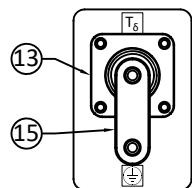
DEGREE OF PROTECTION : IP 55



Drawing approval subject to valid vendor registration

Customer : TRANSMISSION CORPORATION OF ANDRA PRADESH LTD.

This document must not be copied without our written permission and the content and nor be used for any unauthorised purpose. Contravention will be prosecuted. PFIFFNER



Detail 'A'

WARNING
"T_δ" TERMINAL - DO NOT OPEN WHEN IN SERVICE

Item : 12

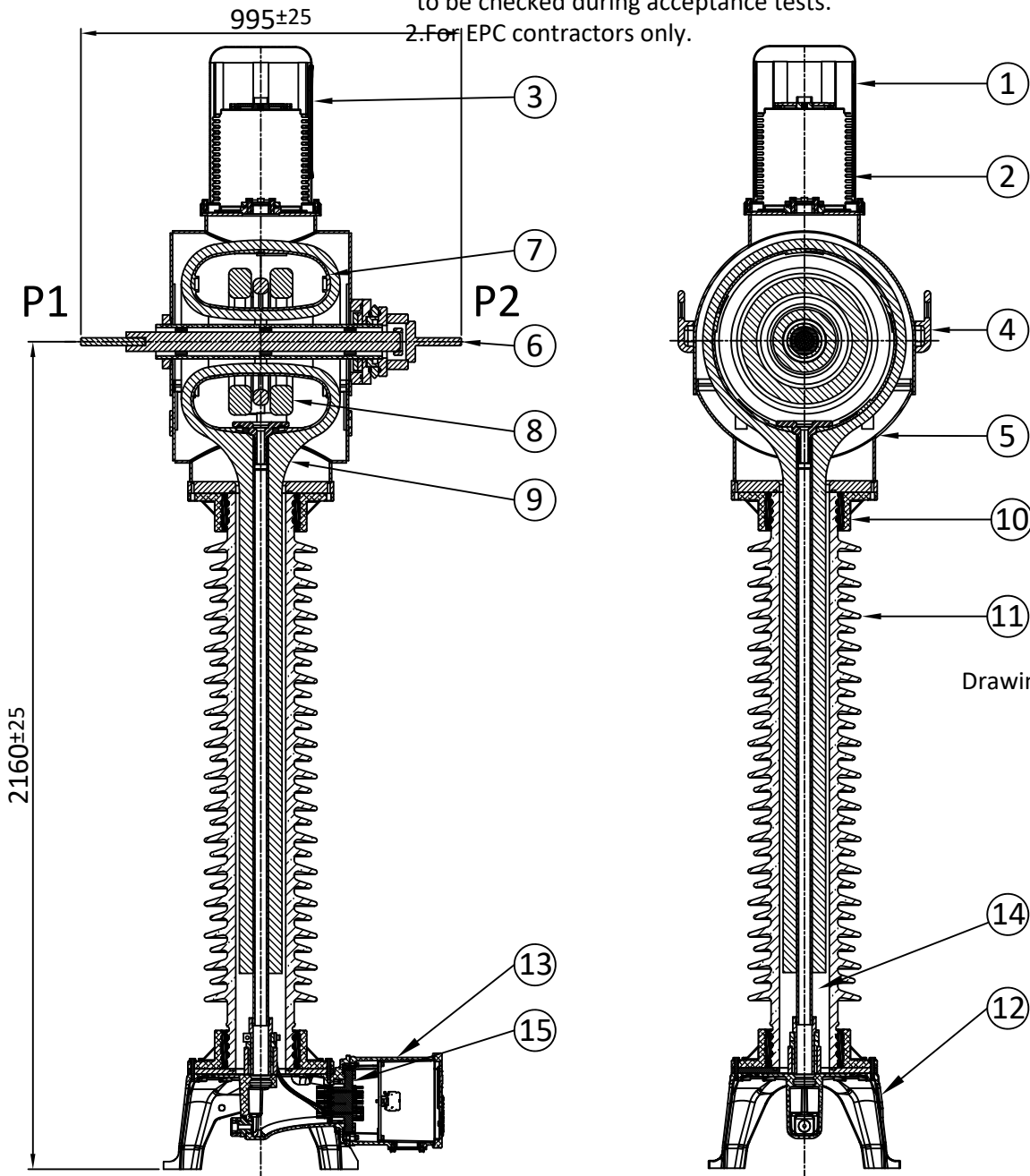
CHIEF ENGINEER/PROJECTS
APTRANSCO/VS/Vijayawada

01	AS PER CUSTOMER COMMENTS.	CHM	18.04.2023
REV.NO.	DESCRIPTION	APPV'D	REV. DATE
GEN. TOL : NA		MATERIAL : NA	
WEIGHT : NA			
NAME	SIGN	DATE	SPEC : NA
DRAWN	M.D.	09.03.2023	FINISH : NA
CHK'D	M.C.	09.03.2023	SCALE : N.T.S.
APPV'D	R.P.	09.03.2023	SHEET SIZE : A3
		TITLE :	DWG NO.
Instrument Transformers Pvt.Ltd.		TERMINAL BOX GA	APTR-03.31.145J3
NASHIK, INDIA		145KV CT	SHEET 1 OF 1
			REV. NO. : 01

NOTE:-1. Drawings approval subject to valid type test reports, to be checked during acceptance tests.

2. For EPC contractors only.

IF IN DOUBT ASK



NO.	QTY.	DESCRIPTION	MATERIAL
01	01	BELLOWS COVER	ALUMINIUM
02	01	BELLOWS	STAINLESS STEEL
03	01	BELLOW LEVEL INDICATOR	POLYCARBONATE
04	02	LIFTING LUG	ALUMINIUM
05	01	HOUSING	ALUMINIUM
06	02	PRIMARY TERMINAL	ALUMINIUM
07	01	CORE BOX	ALUMINIUM
08	01	SECONDARY CORES	CRGO & NANO
09	01	ACTIVE PART	OIL IMPREGNATED PAPER
10	02	INSULATOR FLANGE	ALUMINIUM
11	01	INSULATOR	PORCELAIN
12	01	BASE	ALUMINIUM
13	01	TERMINAL BOX	ALUMINIUM
14	--	INSULATING OIL	EHV Grade - MINERAL OIL
15	01	SECONDARY LEADOUT	EPOXY

Notes:

- Insulating oil shall be EHV Grade as per IS 335, IEC 296
- Core : CRGO Si-Fe/ Equivalent high permeability material, MU- Metal, NANO - crystalline
- Secondary winding - Enamelled copper

Drawing approval subject to valid vendor registration

CHIEF ENGINEER/PROJECTS
APTRANSCO/VS/Vijayawada

Customer : TRANSMISSION CORPORATION OF ANDRA PRADESH LTD.

Variation of Tan Delta Value from 10KV um/sqrt 3 shall be not exceed 15%.

This document must not be copied without our written permission and the content and nor be used for any unauthorised purpose. Contravention will be prosecuted. © PFIFFNER

01	AS PER CUSTOMER COMMENTS.			CHM	18.04.2023
REV.NO.	DESCRIPTION			APPV'D	REV. DATE
GEN. TOL. : NA		MATERIAL : NA			
WEIGHT : NA		SPEC : NA			
DRAWN	M.D.	08.03.2023	FINISH : NA	ALL DIMENSION ARE IN MM. UNLESS OTHRWISE SPECIFIED.	
CHK'D	M.C.	08.03.2023	SCALE : N.T.S.	SHEET SIZE : A3	
APPV'D	R.P.	08.03.2023	TITLE :	DRG NO.	
PFIFFNER Instrument Transformers Pvt.Ltd. NASHIK, INDIA			SECTIONAL VIEW 145KV CT	APTR-03.31.145J4	
				SHEET 1 OF 1	REV. NO. : 01

Variation of Tan Delta Value from 10KV um/sqrt 3 shall be not exceed 15%.

Annexure-A
GUARANTEED TECHNICAL PARTICULARS FOR CURRENT TRANSFORMERS

JOF 145 W OUTDOOR CURRENT TRANSFORMERS
(145kV 800A CT, 3 Core 31mm Creepage)

CHIEF ENGINEER/PROJECTS
APTRANSCO/VS/Vijayawada

Sl.No	Particulars	Description
1	Type of tank/Installation Dead/Live Tank Type	Live Tank, Single Phase, Oil Filled, Outdoor Type
2	Type of mounting	Pedestal Mounting
3	Manufacturer's Name and address and Country of Manufacture	PFIFNER Instrument Transformers Pvt Limited, Gat No. 176, 178/2, Sarul, Nashik 422010, Maharashtra, INDIA
4	Whether Conforming to IEC 61869 Standard	Yes, IEC 61869-1&2
5 a)	Primary and Secondary winding made out of	Primary - Aluminium alloy of C/S area 1960mm ² Secondary - Copper alloy of C/S area 1.168mm ²
b)	Material used for providing Primary Terminals	Aluminium
c)	Material used for providing secondary Terminals	Copper Alloy
d)	Whether Primary is Rigid Bar type in case of live tank	Yes, Rigid Bar type
6	Rated primary voltage (kV rms)	132 kV
7	Rated highest voltage (kV rms)	145 kV
8	Rated frequency (Hz)	50 Hz
9	Rated primary current (A)	800A
10	Rated secondary current (A)	1A
11	Ratio taps (on secondary side only)	On Secondary Only
12	Type of insulation	Class A
13	Seismic acceleration (g)	0.3g
14	RIV at 1.1 x Rated voltage (mv)	< 500 Micro Volts
15	Tank material and Tank coating	Aluminium Tank with Natural Finish
16	Porcelain housing and it make (Single piece only)	IEC/Modern/Ravikiran
17	Sealing (Nitrogen gas cushion/Metal Bellow)	Stainless Steel Bellows
18	Instrument security factor	≤ 5 (For Metering core)
19	Tan Delta	< 0.5%
20	Partial Discharge Level	< 5pC at 1.2 x Um /√3, < 10pC at Um (where Um is highest system voltage)
21	Rated short time withstand current for 1 sec. duration (kA rms)	31.5 kA
22	Rated dynamic withstand current (kAp)	78.75

Drawing approval subject to valid vendor registration

PFIFNER INSTRUMENT TRANSFORMERS PRIVATE LIMITED | CIN: U31909MH2018FTC318024

G.NO.176, 178/2, SARUL, NASHIK- 422010, MH, INDIA | +912532978227 | contact@pfifner.in | www.pfifner.in

Sl.No	Particulars	Description		
23	Rated continuous thermal current (pu) where pu = rated current	Rated Extended Primary Current 120%		
24	1.2/50 microsecond impulse withstand voltage (kVp)	650 kVp		
25	One minute power frequency withstand voltage (kV rms) of Primary winding (Dry)	275 kV rms		
26	One minute power frequency withstand voltage of secondary winding (kV rms)	3 kV		
27 a)	Minimum total Creepage distance of insulator bushing (mm)	31mm/kV Porcelain Insulator / 4495 mm		
b)	Protected Creepage of distance of bushing (mm)	Not Applicable		
28	Details of Cores	Core 1	Core2	Core 3
i)	Current Ratios A/A	800-500/1-1-1A		
ii)	Output burden (VA)	20	-	20
iii)	Class of accuracy	5P20	PX	0.2S
iv)	ISF	NA	NA	≤ 5
v)	Min. knee point voltage (kpv) in volts	NA	≥40I(Rct+10)	-
vi)	Secondary resistance corrected to 75 deg.C in ohms	NA	NA	--
vii)	Max. Exciting current (mA) at Vk - 100% of knee point voltage	NA	≤30mA	-
viii)	Application			
29	Weight of oil (Kg.)	110kg ± 10% (approx.)		
30	Total Weight (Kg.)	425 ± 10% (approx.)		
31	Mounting details	450mm x 450mm (Refer GA Drawing)		
32	Suitable for altitude-Max (Meters)	1000		
33	Secondary Terminal Box Arrangement	Single door Box		

1. Minimum 300mm plinth shall be maintained for CT/PT/CVT/ Isolators/IVT in the substation during foundation works to ensure safe live to ground clearance as per IE rules.
2. Since the supply of terminal connectors is not in the scope of manufacturers as mentioned in the drawings. The EPC contractors shall be instructed to supply the same in line with CT/PT/CVT/Isolator /IVTs requirement and capatibility.

Drawing approval subject to valid vendor registration

CHIEF ENGINEER/PROJECTS
APTRANSCO/VS/Vijayawada

Variation of Tan Delta Value from 10KV um/sqrt 3 shall be not exceed 15%.