

7459801/2023/EEMRT-ENE51

PAVANI POWER SYSTEMS PVT. LTD.,

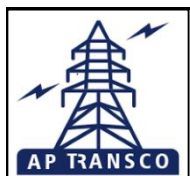


TRANSMISSION CORPORATION OF ANDHRA PRADESH LTD.

GUARANTEED TECHNICAL PARTICULARS FOR 145KV 800A DB
WITHOUT EARTH SWITCH ISOLATOR

S.No	DESCRIPTION	GUARANTEED VALUE
1	Type / Installation	"DBR' Double Break Center post rotating type" / Outdoor installation
2	Manufacturer's Name and Country of Manufacture	PAVANI POWR SYSEM PVT LTD. INDIA
3	Standards according to which the isolators are manufactured	IS: 9921 - Part-I to V / IEC:62271-102
4	Miximum design voltage at which the isolator can operate (kV)	145
5	Frequency (Hz)	50
6	Rated voltage (kV)	145
7	Maximum current that can be safely interrupted by the isolator Inductive (A & % PF) Capacitive (A & % PF)	Inductive- 0.7 Amps at 0.15 p.f. Capacitive- 0.7 Amps at 0.15 p.f.
8	Continuous current rating Nominal (Amps) under site conditions	800
9	Rated short time current	MAIN SWITCH
	i) For 3 seconds (kA rms)	40KA 3.Sec.
	ii) For 1 second (kA rms)	Not Applicable
	iii) Rated peak short time current (kVp)	100
10	Current density at the minimum cross-section of	Contact sizes indicated in Annexure - III of specification & as per the property of materials.
	a) Moving blade (Amps/ Sq.mm) Cu. Tube	2.0 Amps / Sq.mm for HDE Cu. Tube
	b) Terminal pad : Aluminum Flat	1.0 Amp/ Sq.mm for EC grade Alu. Flat
	c) Contacts : Cu.Flat	1.6 Amps/Sq.mm for HDE Cu. Flat
	d) Terminal connector : Aluminm Casting	1.0 Amps/Sq.mm for Alu. Alloy.
11	Maximum Temp. Rise of current carrying parts when carrying rated current continuously (deg.C)	Within the specified limits of IS: 9921 - PartII/ IEC-62271-102
13	Insulation Levels	
	i) Impulse withstand voltage (kV peak) phase to earth across isolating distance:	650/ 750 kV peak
	ii) Switching surge withstand voltage (kV peak) phase to earth across isolating distance	Not applicable
	iii) Power frequency withstand voltage (kV rms) Phase to earth across isolating distance	275/ 315 kV rms
14	Minimum clearance in air	
	i) Between poles (mm)	2700mm (For Phase spacing of 3000 mm)
	ii) Between live parts and earth (mm)	1300 mm (Equal to dry arcing distance of insulators selected)
	iii) Between live parts when switch is open	
	a) On the same pole (mm)	2135
	b) Between adjacent poles (mm)	3000

NOTE : DRAWING APPROVAL SUBJECT TO VALID TYPE TEST REPORTS, TO BE CHECKED DURING ACCEPTANCE TESTS.



TRANSMISSION CORPORATION OF ANDHRA PRADESH LTD.

GUARANTEED TECHNICAL PARTICULARS FOR 145KV 800A DB
WITHOUT EARTH SWITCH ISOLATOR

S.No	DESCRIPTION		GUARANTEED VALUE
15	Rated mechanical terminal load		:
	i)	Load along the terminal connector side (Kg.)	: 51
	ii)	Load across the terminal connector side (Kg.)	: 18
16	Torque required to operated the switch in Kg.m		: 35
17	Design and Construction		:
	i)	No. of insulators per pole	: Three
	ii)	No. of breaks per pole	: Two
	iii)	Type of closing / opening mechanism (Horizontal/Vertical break straight etc.)	: Horizontal break for isolator
	iv)	Contacts	:
	a)	Material and grade	: Hard drawn electrolytic copper flat, contact area is silver plated (15 Microns)
	b)	Cross-sectional area (mm)	: 512 sq.mm for 800 Amps
	v)	Moving blades	:
	a)	Material and grade	: Hard drawn electrolytic copper flat, contact area is silver plated (15 Microns)
	b)	Cross-sectional area (mm)	: 427 sq.mm for 800 Amps
	vi)	Contact support	:
	a)	Material and size of channel/block	: 4 mm thick, MS HDG
	b)	Material and size of plate	: 6 mm thick, MS HDG Plate
	vii)	Rain hood - Material grade and size	: 1mm GI Sheet
	viii)	Turn and twist mechanism	:
	a)	Material and size of clamps	: 40 x 8 mm thick, MS HDG flat.
	b)	Maerial size of springs	: 3.0 mm Stainless steel wire
	c)	Whether springs are encased	: Not encased.
	ix)	Nuts and Bolts	:
	a)	Size, material and grade in live parts	: Less than M12: Stainless steel
	b)	Size, material and grade in other parts	: M12 and above: MS HDG.
	x)	Insulator base plate / channel material and size of plate below insulators	: 225 x 75, 10mm Thk MS HDG channel
	xi)	Bearings	:
	a)	Material and size of housing	: MS HDG suitable for 40 ID taper roller/ ball bearing.
	b)	No. of bearings, location and size	: 2 Nos . Below centre rotating post insulator.

1) Minimum 300mm plinth shall be maintained for CT/PT/CVT/Isolators in the substation during foundation works to ensure safe live to ground clearances as per IE rules.

2) Since the supply of terminal connectors is not in the scope of manufacturer as mentioned in the drawings, the EPC contractors shall be instructed to supply the same in line with CT/PT/CVT/Isolators requirement and compatibility.

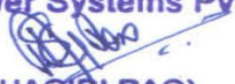
7459801/2023/EEMRT-ENE51

PAVANI POWER SYSTEMS PVT. LTD.,

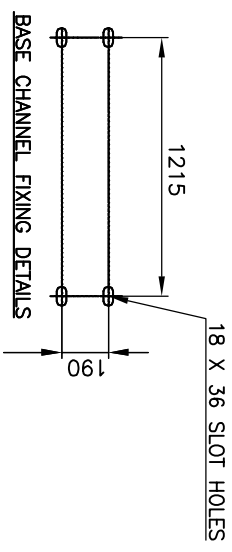
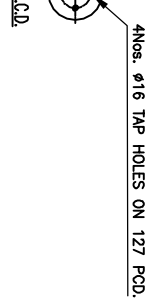
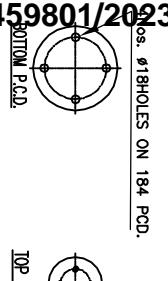
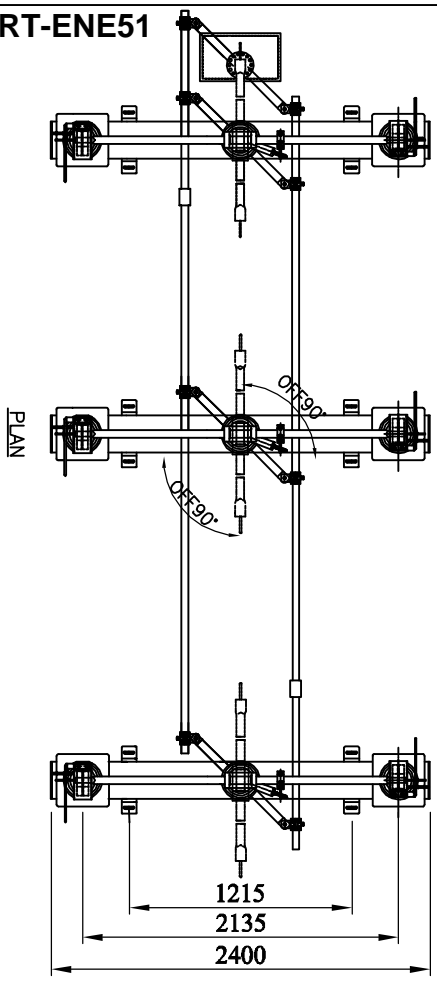
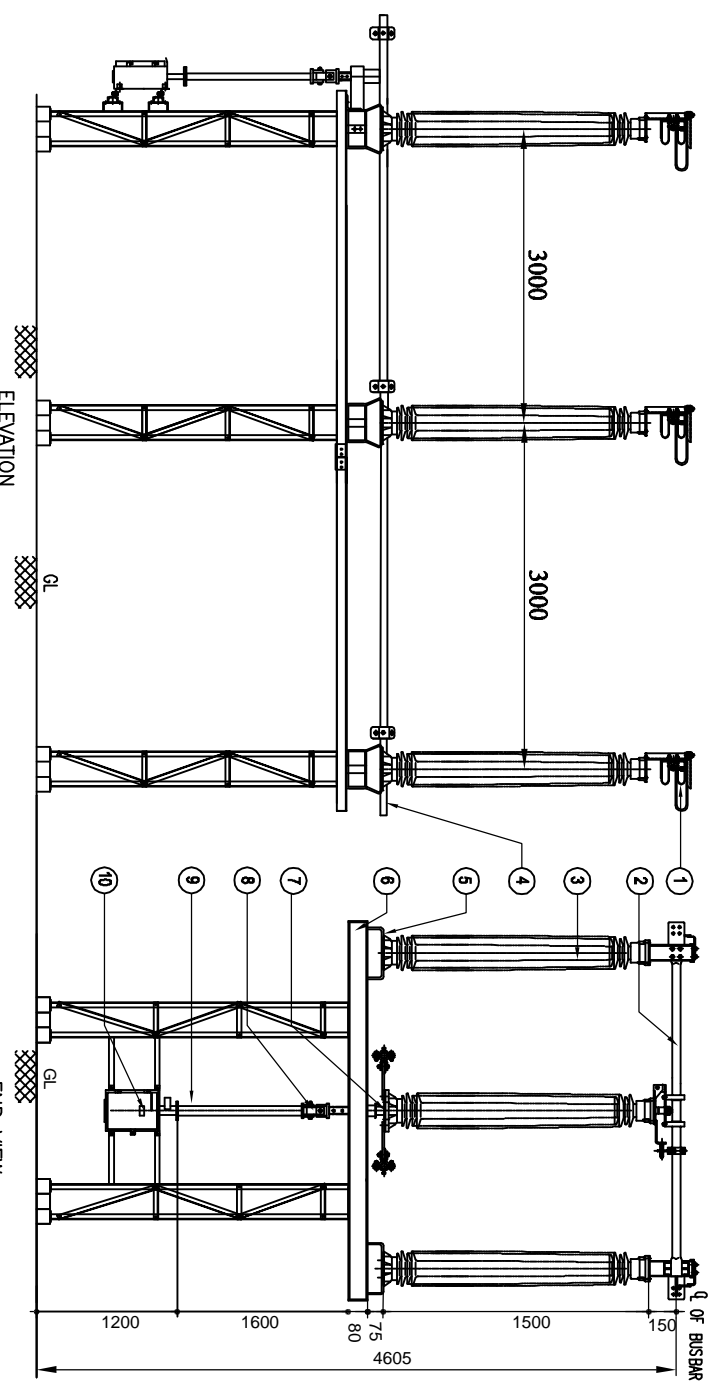


TRANSMISSION CORPORATION OF ANDHRA PRADESH LTD.

GUARANTEED TECHNICAL PARTICULARS FOR 145KV 800A DB
WITHOUT EARTH SWITCH ISOLATOR

S.No	DESCRIPTION	GUARANTEED VALUE
xii)	Tandem pipe	:
	a) Size, class and No. of pipes	: 32mm NB Class B,GI Pipe for Main switch-2Nos
	b) Size of shackle, screw	: Suitable for 32mm NB GI Pipe
	c) No. of bearings/bush and its material and size	: Not applicable
xiii)	Type of interlock	: Electrical interlock between isolator and correspondin breaker.
xiv)	Down pipe size and class	: 50 NB Class B GI pipe
xv)	Type of universal/swivel joint	:
	a) Between bearing and down pipe	: Universal Joint (MS HDG)
	b) Between down pipe and operating mechanism	: Vernier flange
xvi)	Operating mechanism	: Manual operated mechanism for main switch
	a) Control cabinet material and thickness	: 3.mm THK Aluminum Sheet
	b) Degree of protection	: IP: 55 as per IS: 2147
	c) Type, size and No. of cable glands	: Double compression type 2Nos. 19 mm (Contractor scope of supply)
	d) Whether removable gland plate provided	: Yes, provided.
	e) Make, type, rating and quantity of motors	: Not applicable
	f) Auxiliary blocks	: 6 NO + 6 NC Contacts for main switch, 10 Amps, 2 A DC Breaking with 2A - 1 No.
	g) Terminal blocks	: UBT-4
	h) Insulated wires	: 1100 V grades, 2.5 Sq. mm PVC cable
	i) HRC Fuse	: FTC / GE / S&S or Eqvt.
	j) Space Heater	: Not applicable
	k) Interlocks	: Not applicable
xvii)	Base:	:
	a) Size of steel section used	: 145x80x5mm Rectangle box profile(M.S.HDG)
	b) Overall sie	: 145 x 80 x 2400 mm
	c) Total weight.	: 65Kgs (Approx.) one pole
	Name of the firm	: For Pavani Power Systems Pvt. Ltd.
	Signature of Bidder	: 
	Designation & Seal	: (T. SESHAGIRI RAO) Managing Director
	Date	: 18-05-2023

7459801/2023/FEMRT-ENE51



Drawing approval subject to valid vendor registration

Chief Engineer
Projects

PART LIST:

1. FIXED CONTACT ASSEMBLY
2. MOVING CONTACT ASSEMBLY
3. INSULATOR STACK (COSTUMER SCOPE)
4. TANDEM PIPE FOR INSULATOR (32NB, CLASS "B" G.I PIPE)
5. ELEVATOR CHANNEL (220 X 75MM X 10MM THK M.S HDG)
6. BASE CHANNEL (145 X 80 X 5MM THK. M.S HDG)
7. ROTATING STOOL BASE WITH LEVER ARM & CLAMP (M.S HDG)
8. OPERATING PIPE CONNECTING BUSH (M.S HDG)
9. DOWN PIPE FOR INSULATOR (50NB CLASS" B" G.I PIPE)
10. MANUAL OPERATING MECHANISM FOR INSULATOR

REFERENCE DRAWINGS:


1. FOR INSULATOR CONTACT ASSEMBLY (800 AMPS)
2. FOR MANUAL OPERATED MECHANISM FOR MAIN SWITCH
3. FOR NAME PLATE DETAILS

NOTE:

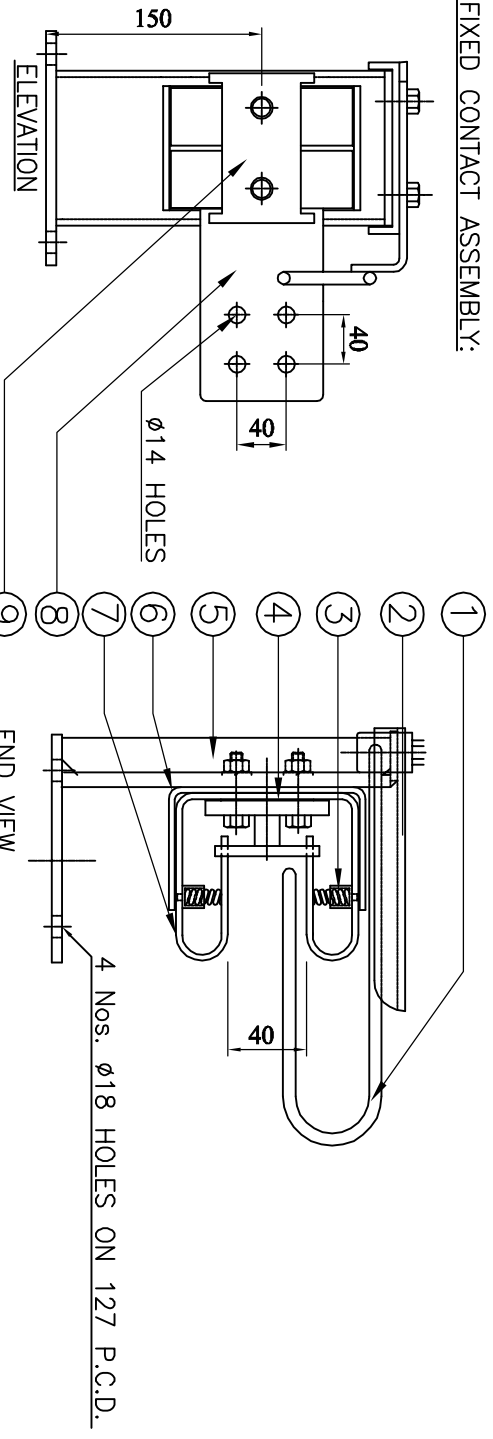
1. ALL DIMENSIONS ARE IN MILLIMETERS
2. THE INDICATED DIMENSIONS ARE SUBJECT TO THE MANUFACTURING TOLERANCE:
 UP TO 50mm -----±3%; 51 TO 100mm ----- ±2%
 101 TO 300mm -----± 1%; ABOVE 300mm -----±0.5%
 3. SHORT TIME CURRENT RATING 40KA rms. FOR 3 Sec.
 4. MIN. CREEPAGE DISTANCE 3625 mm(25mm/KV)
 5. APPLICABLE STANDARD : IEC: 62271-102
 6. ALL FERROUS PARTS ARE HOT DIP GALVANIZED (85MICRONS)

For Pavani Power Systems Pvt. Ltd.

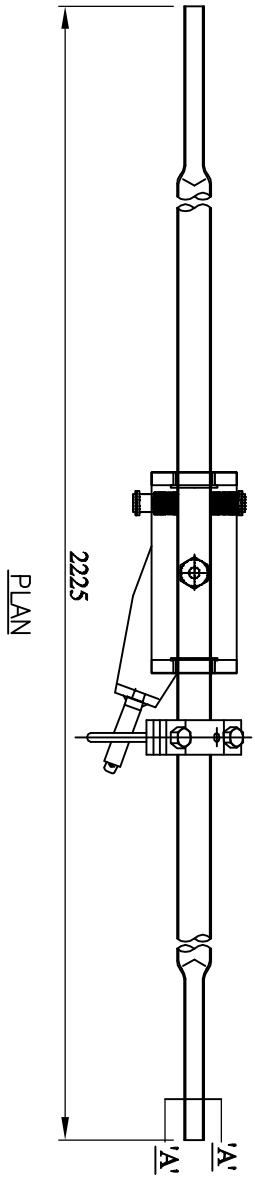
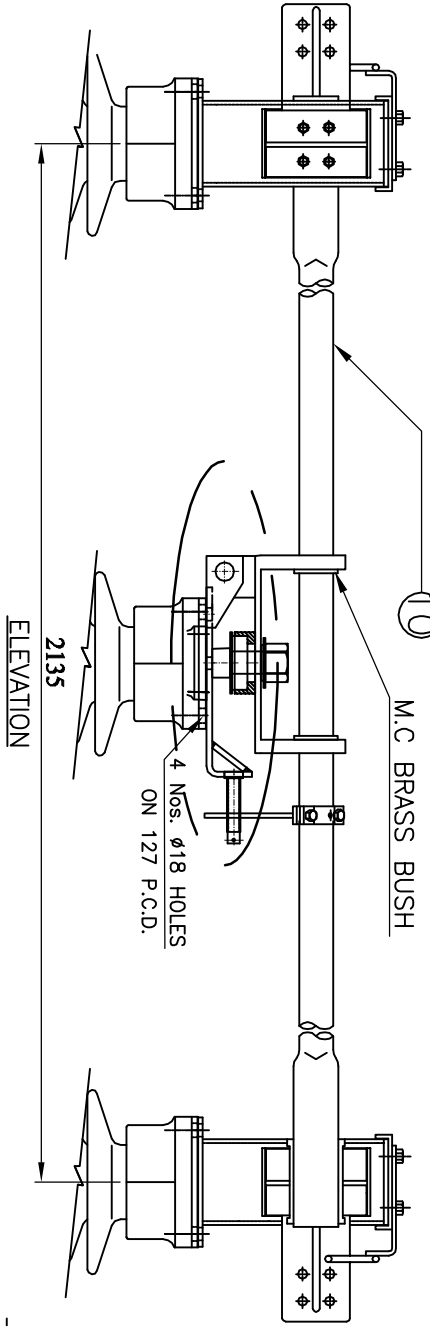
(T. SESHAGIRI RAO)
Managing Director

 <p>TRANSMISSION CORPORATION OF ANDHRA PRADESH LTD</p>									
<p>TITLE: 145KV, 800A, TP, HDB, KT, INSULATOR WITHOUT E.S. (WITH MANUAL OPERATING MECHANISM)</p>									
<p>REVISIONS:</p> <table border="1"> <tr> <td>D</td> <td>C</td> <td>B</td> <td>A</td> </tr> <tr> <td> </td> <td> </td> <td> </td> <td> </td> </tr> </table>		D	C	B	A				
D	C	B	A						
<p>SCALE: 1:1</p>									
<p>DATE: 18-05-2023</p>	<p>DRAWN:</p>								
<p>CHECKED:</p>	<p>APPROVED:</p>								
<p>SHEET: 01 OF 04</p>	<p>DRG.NO.: PPSPT-APT-GAD-44-01</p>								
<p>PAYANI POWER SYSTEMS PVT.LTD. Plot No. 06/056/4/6, K.K. OVERSEAS SOCIETY, IDA, DULLAPALLY, QUTHUBULLAPUR MANDAL, KODURU ROAD, HYDERABAD - 500100. MEDICAL MARKAGER DIST. TELANGANA</p>									

FIXED CONTACT ASSEMBLY:



MOVING CONTACT ASSEMBLY:



BILL OF MATERIAL PER ONE SET

SL NO.	DESCRIPTION	SIZE IN MM	MATERIAL
1.	ARCING HORNS	Ø10MM ROD	M.S HDG
2.	RAIN HOOD	1MM SHEET	M.S HDG
3.	JAW SPRINGS	Ø2mm WIRE	STAINLESS STEEL
4.	BI-METALLIC SHEET	2mm THK	ALU. + CU.
5.	FIXED CONTACT SUPPORT CHANNEL	80x30x4 mm	M.S HDG
6.	JAW SUPPORT BRACKETS	32 X 5 FLAT	M.S HDG
7.	FIXED CONTACT JAWS (2. NOS)	32 X 4 FLAT	HDEC
8.	JUMPER PAD	75 X 12 FLAT	ALUMINIUM
9.	FC SPACER	-----	ALUMINIUM
10.	MOVING CONTACT	38-ODX30-ID	HDEC

- NOTE:
1. ALL DIMENSIONS ARE IN MILLIMETER
 2. ALL FERROUS PARTS ARE HOT DIP GALVANIZED (85 MICRONS)
 3. ALL NON FERROUS CONTACT POINTS ARE SILVER PLATED (15 MICRONS)
 4. MOVING CONTACT ASSEMBLY SHOWN IS FOR TURN & TWIST ASSEMBLY

For Pavani Power Systems Pvt. Ltd.
 (T. SESHAGIRI RAO)
 Managing Director



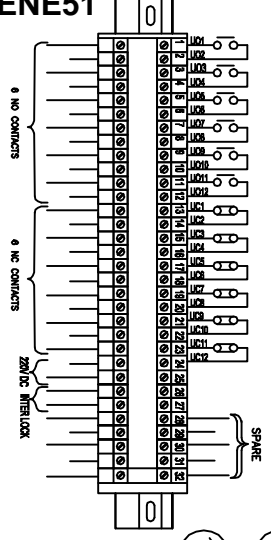
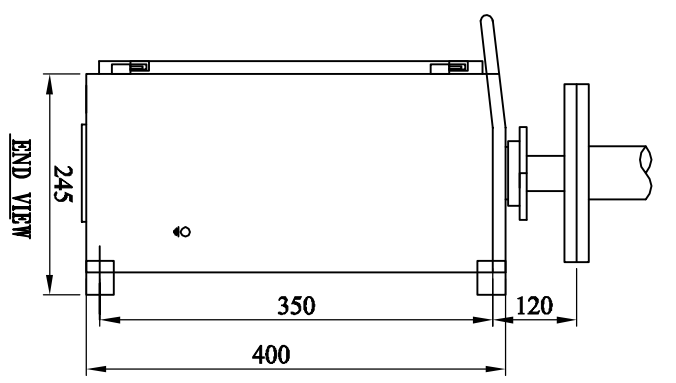
TRANSMISSION CORPORATION OF
 ANDHRA PRADESH LTD

TITLE: MAIN SWITCH CONTACT ASSEMBLY (FOR 146kV, 800A ISOLATOR)		SCALE: 1:1
REVISIONS: D C B A	DATE: 18-05-2023 DRAWN:	DATE: 18-05-2023 DRAWN:
PAVANI POWER SYSTEMS PVT.LTD. Plot No. 06/065/4/6, K.K. OVERSEAS SOCIETY, TDA, DULAPALLY, QUTHUBULLAPUR MANDAL, KODURU ROAD, HYDERABAD - 500100. KODURU ROAD, HYDERABAD - 500100.		CHECKED: APPROVED: SHEET: 02 OF 04 DRG.No: PPSPT-APT-MSCA-A4-02

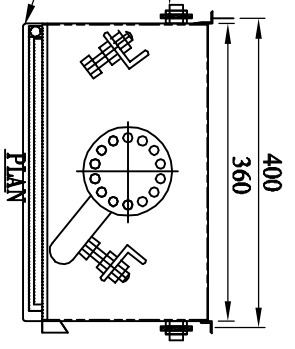
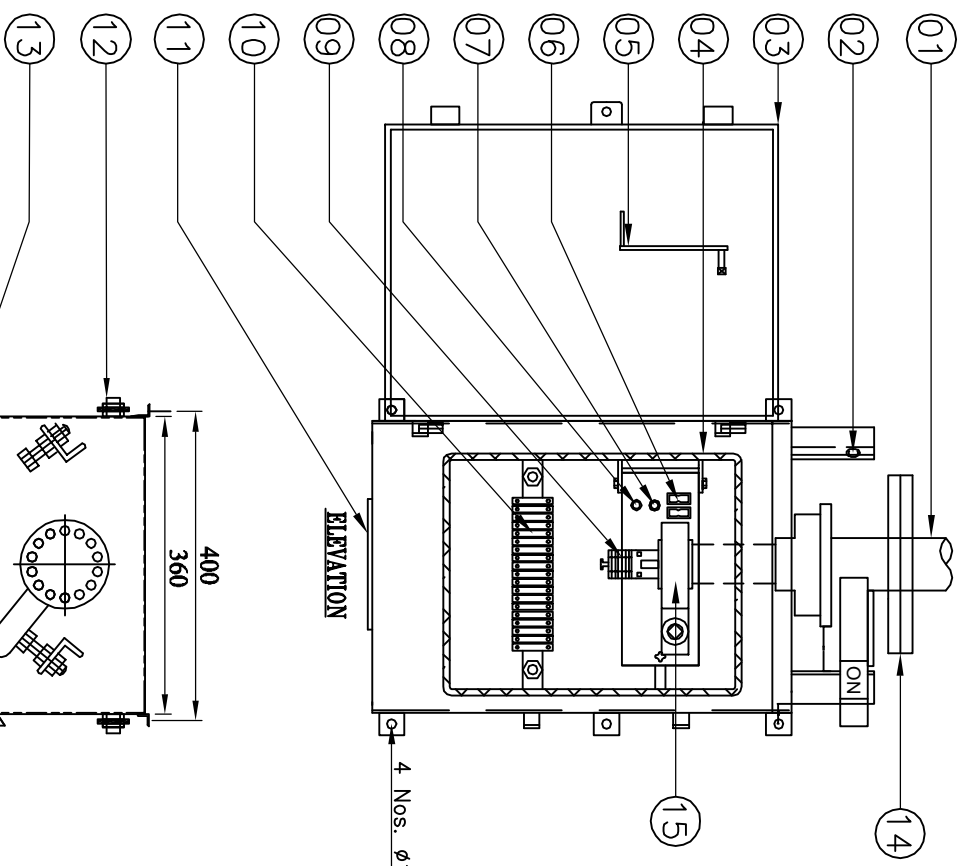
Drawing approval subject to valid vendor registration

Chief Engineer
 Projects

7459801/2023/EFMRT-ENE51



AUX. SWITCH CONTACT DETAILS FOR ISOLATOR (6 NO + 6 NC)



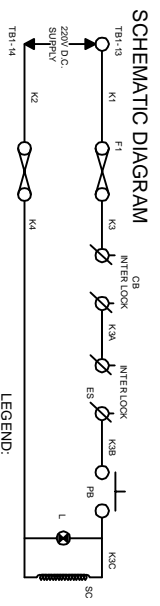
Drawing approval subject to valid vendor registration

ALL DIMENSIONS ARE IN MILLIMETERS
 CUBICLE WILL BE POWDER COATED WITH LIGHT GRAY SHADE NO:631 OF IS : 5
 DEGREE OF PROTECTION IP: 55 AS PER IS :13947
 20% SPARE TERMINALS WILL BE PROVIDED AND SHALL BE UNIFORMLY DISRIBUTED
 TO ALL TERMINAL BLOCKS EQUALLY
 WIRING WILL BE DONE WITH 1100V.GRADE 2.5 Sq.MM CU STRANDED P.V.C.
 INSULATED CONDUCTOR

WEIGHT OF THE BOX : 35Kg (APPROX.)
 PPSPL MAKE REDUCTION GEAR RATIO:20:1 MATERIALS EN8/STEEL

Chief Engineer
 Projects

- PART LIST:-**
1. DOWN PIPE
 2. ON & OFF STOPPER
 3. CUBICAL WITH DOOR 3.mm Alu. SHEET)
 4. RUBBER GASKET (EPDM)
 5. OPERATING HANDLE
 6. FUSES (2A)
 7. INDICATION LAMP
 8. PUSH BUTTON
 9. AUXILIARY SWITCH 6NO + 6NC
 10. TERMINAL BLOCK(UBT-4 (VINMECH OR EQVT.))
 11. DETACHABLE TYPE CABLE GLANDS PLATE
 12. EARTHING TERMINAL-2 Nos.
 13. RAIN SHADE
 14. 12/14 HOLES FLANGE 8MM THK. (M.S HDG)
 15. REDUCTION GEAR BOX



LEGEND:
 F1 F2-----FUSES (2amp Rating)
 PB-----PUSH BUTTON
 L-----INDICATION LAMP
 SC-----SOLENOID COIL

For Pavani Power Systems Pvt. Ltd.
 (T. SESHAGIRI RAO)
 Managing Director

AP TRANSCO

**TRANSMISSION CORPORATION OF
 ANDHRA PRADESH LTD**

REVISIONS	SCALE:
D C B A	18-05-2023
1	DATE
2	DRAWN
3	CHECKED
4	APPROVED
5	SHEET
6	03 OF 04
7	DESIGN:
8	PPSPL-APT-RMS-44-03

MANUAL OPERATING MECHANISM BOX
 (FOR 145kV ISOLATOR)

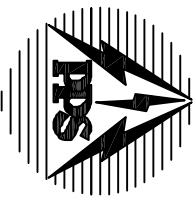
PAVANI POWER SYSTEMS PVT.LTD.
 Plot No. 06/056/4/6, K.K. OVERSEAS SOCIETY,
 DDA, DULAPALLY, QUTHUBULLAPUR MANDAL,
 KOMPALLA POST, HYDERABAD - 500100.
 METROPOLITAN WARDENSHIP DIST., TELANGANA

Drawing approval subject to valid vendor registration

MANUFACTURED & SUPPLIED BY

PAVANI POWER SYSTEMS PVT.LTD.

PLOT No.05/055/A/6, K.K.OWNERS SOCIETY, DULAPALLY INDUSTRIAL AREA,
KOMMPALLY POST, HYDERABAD-500100. MEDCHAL MALKAJGIRI DIST. T.S.



ISOLATOR RATING NAME PLATE

CLIENT: TRANSMISSION CORPORATION OF A.P LTD

CUSTOMER: -----

PO.No/DATE: -----

YEAR OF MFG. -----

SL.No.

TYPE DBR FREQUENCY (Hz)

50

VOLTAGE (kV) 145 I.W. VOLTAGE

650kVp

STC kA/SEC. 40/3 P.F.W. VOLTAGE(DRY)

275kVrms

CURRENT (A) 800 OPERATING DRIVE

MANUAL

CONTROL VOLTAGE

220 V DC

NOTE : DRAWING APPROVAL SUBJECT TO VALID TYPE TEST REPORTS, TO BE CHECKED DURING ACCEPTANCE TESTS.

1). Minimum 300 mm Plinth shall be maintained for Current transformers in the substation during foundation works to ensure safe live to ground clearances as per IE rules.

2). Since the supply of terminal connectors is not in the scope of CT Manufacturer as mentioned in the drawings, the EPC contractors shall be instructed to supply the same in line with the CT requirement and compatibility.

FOR EPC CONTRACTS ONLY

Chief Engineer
Projects

For Pavani Power Systems Pvt. Ltd.

(T. SESHAGIRI RAO)
Managing Director

TRANSMISSION CORPORATION OF
ANDHRA PRADESH LTD



NAME PLATE DETAILS
(FOR 145kV ISOLATOR)

PAVANI POWER SYSTEMS PVT.LTD.
Plot No. 05/055/A/6, K.K.OWNERS SOCIETY,
IDA, DULAPALLY, QUTHUBULLAPUR MANDAL,
KOMMPALLY POST, HYDERABAD - 500100.
MEDCHAL MALKAJGIR DIST. TELANGANA

SCALE: 1:1	DATE	18-05-2023
DRAWN	CHECKED	
APPROVED		
SHEET	04 OF 04	
DRG.No:	PPSP-APT-NPD-44-04	