

NOTE:- THIS COMPLETE SET OF DRAWINGS ARE REPRESENTATIVE OF THE LATEST TYPE TEST REPORT AND PROPRIETARY DESIGN, RESEARCH & DEVELOPMENT OF SWITCHGEAR MANUFACTURING COMPANY PVT. LTD. GANDRAJUPALLE. THE DESIGNS SHALL NOT BE REPRODUCED WITHOUT WRITTEN CONSENT OF SWITCHGEAR MANUFACTURING COMPANY PVT. LTD. GANDRAJUPALLE.

NOTE: 1. Drawings Approval subject to valid type test reports, to be checked during acceptance tests.
 2. For EPC contractors only.

1. Minimum 300mm plinth shall be maintained for CT/PT/CVT/Isolators/IV/LA/Breakers in the substation during foundation works to ensure safe live to ground clearance per IE rules.
2. Since the supply of terminal connectors is not in the scope of manufacturer as mentioned in the drawings. The EPC contractor shall be instructed to supply the same line with CT/PT/CVT/Isolator/IVT/LA/Breaker's requirement and compatibility.

REV	DATE	CHANGES MADE	SIG

LIST OF DRAWINGS/DOCUMENTS FOR 33KV DBR DISCONNECTOR

S NO.	TITLE	DRAWING NO.	REV	SHEET
1	GA OF 33kv 800A 'DBR' DISCONNECTOR WITHOUT EARTH SWITCH	STD-3300001	0	1 OF 1
2	DETAILS OF MAIN CONTACT (33KV 800A DBR DISCONNECTOR)	STD-3300002	0	1 OF 1
3	GA OF MANUAL OPERATING MECHANISM FOR DISCONNECTOR	STD-3300003	0	1 OF 1
4	NAME PLATE DETAILS (FOR 33KV DBR DISCONNECTOR)	STD-3300004	0	1 OF 1

Drawing approval subject to valid vendor registration

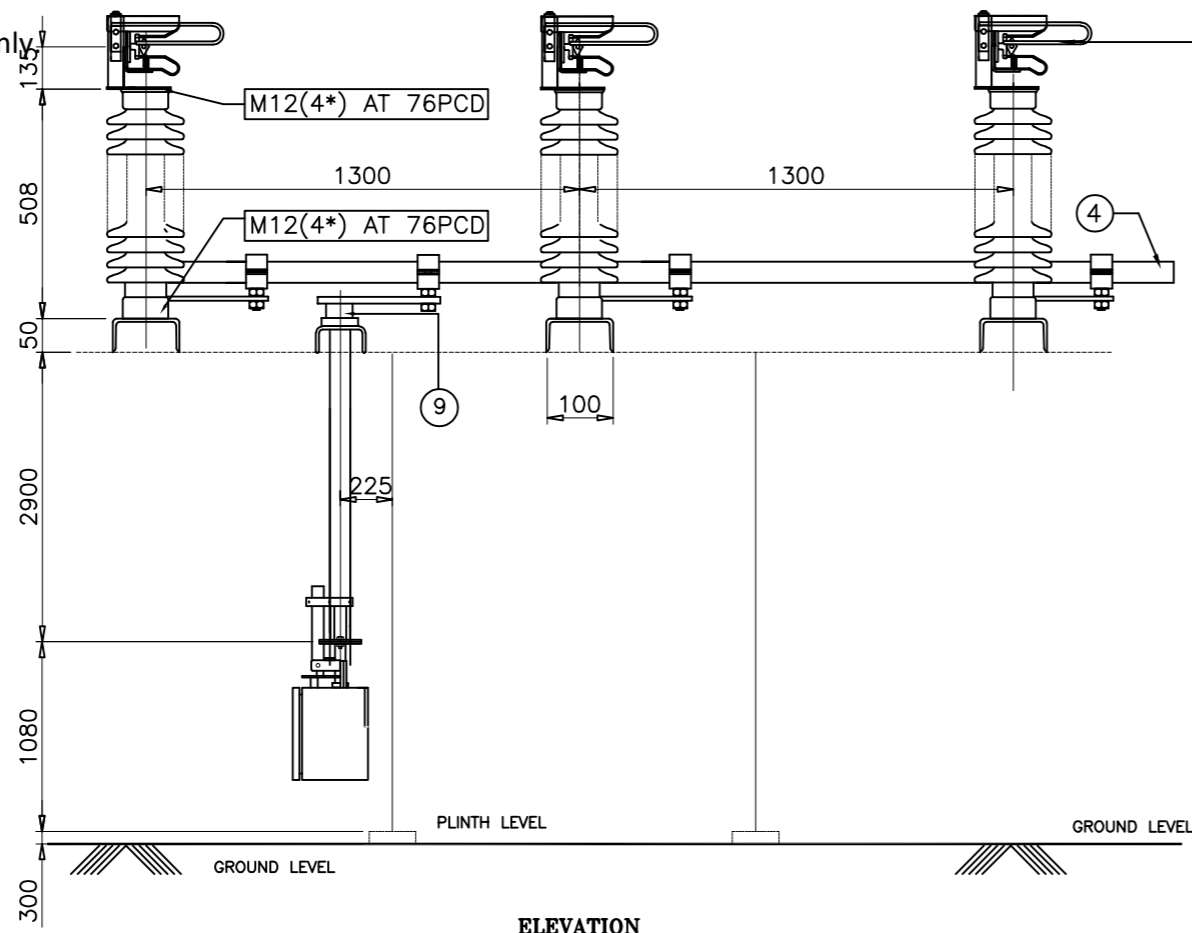
CHIEF ENGINEER/PROJECTS
APTRANSCO/VISVIJAYAWADA

DRN	YVG	04.06.22	SWITCHGEAR MANUFACTURING COMPANY
CHKD	VK	04.06.22	
APPD	OJA	04.06.22	TITLE
DEPT	SIGN	DATE	MASTER LIST
			FOR 33KV DBR DISCONNECTOR
	SC: NTS	Paper size A3	DRG.NO. S T D - 3 3 0 0 0 0 0
			SHEET 1 OF 1
			REV. 0

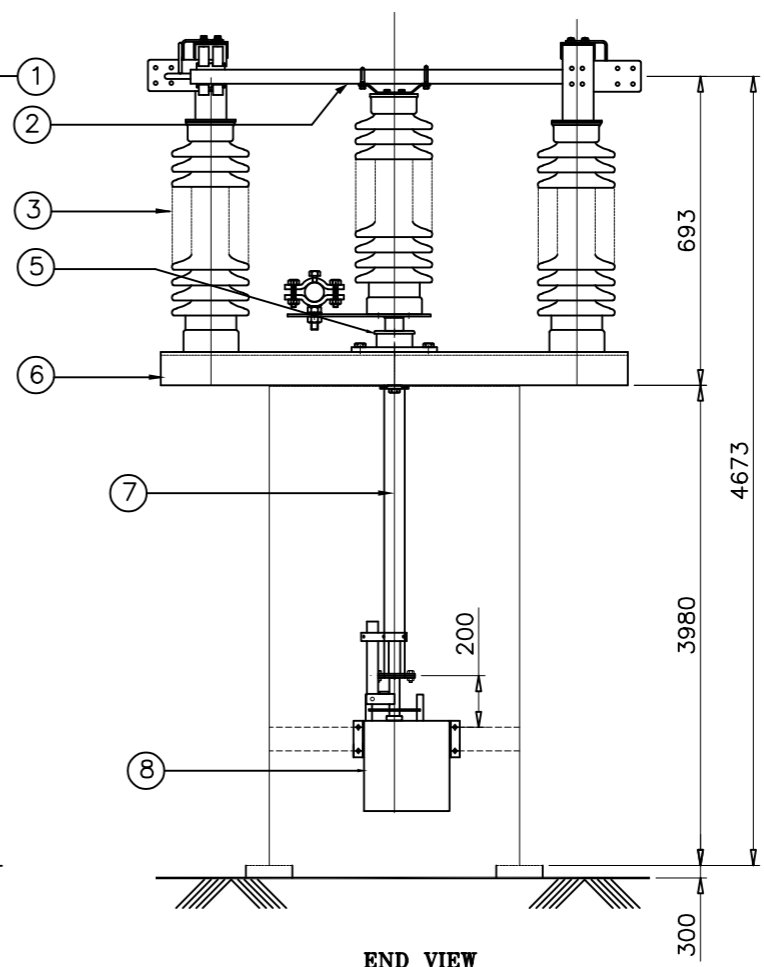
NOTE:- THIS COMPLETE SET OF DRAWINGS ARE REPRESENTATIVE OF THE LATEST TYPE TEST REPORT AND PROPRIETARY DESIGN, RESEARCH & DEVELOPMENT OF SWITCHGEAR MANUFACTURING COMPANY PVT. LTD. GANDRAJUPALLE. THE DESIGNS SHALL NOT BE REPRODUCED WITHOUT WRITTEN CONSENT OF SWITCHGEAR MANUFACTURING COMPANY PVT. LTD. GANDRAJUPALLE.

NOTE: 1. Drawings Approval subject to valid type test reports, to be checked during acceptance tests.

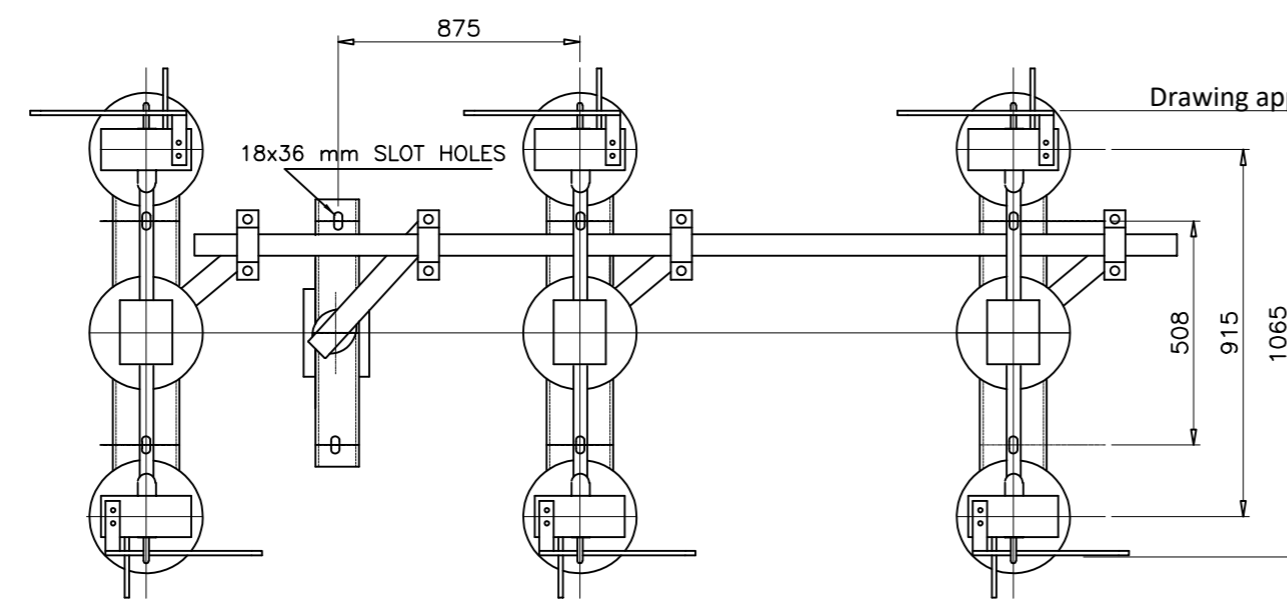
2. For EPC contractors only



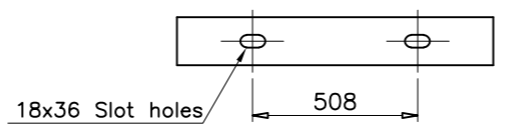
ELEVATION



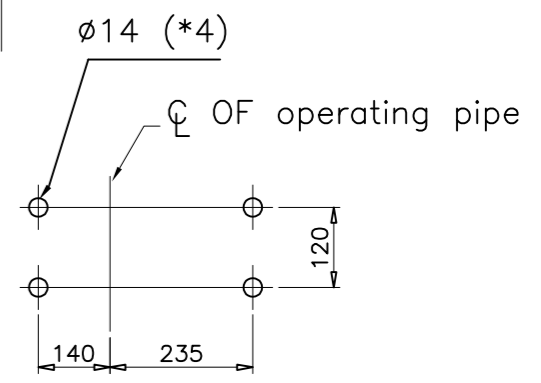
END VIEW



PLAN



BASE CHANNEL MOUNTING DETAILS



FIXING DETAIL OF M/S BOM BOX

PART LIST	QTY.
1 FIXED CONTACT ASSEMBLY	6
2 MOVING CONTACT ASSEMBLY	3
3 INSULATOR STACK	9
4 TANDEM PIPE (25 NB GI PIPE)	1
5 ROTATING STOOL POST	3
6 BASE CHANNEL (100X50X5MM THK)	3
7 OPERATING PIPE (40 NB GI PIPE)	1
8 OPERATING MECHANISM BOX (MANUAL)	1
9 TOP OPERATING MECHANISM	1

**CHIEF ENGINEER/PROJECTS
APTRANSCO/VISVIJAYAWADA**

- NOTES**
- All Dimensions are in mm
 - All Ferrous Parts are in Hot Dip Galvanized with 85 Microns.
 - All non Ferrous Contact Points are Silver Plated with 15 Microns.
 - The main Rotating Post has Two Nos of Bearings
 - All GI Pipes are 'B' Class as per IS:1239
 - Manufacturing Tolerance
 - i) Up to 50mm-- ±3%
 - ii) 51 to 100mm-- ±2%
 - iii) 101 to 300mm-- ±1%
 - iv) Above 300mm-- ±0.5%
 - Weight of Metallics - 220kgs (Approx.)

REV	DATE	CHANGES MADE	SIG

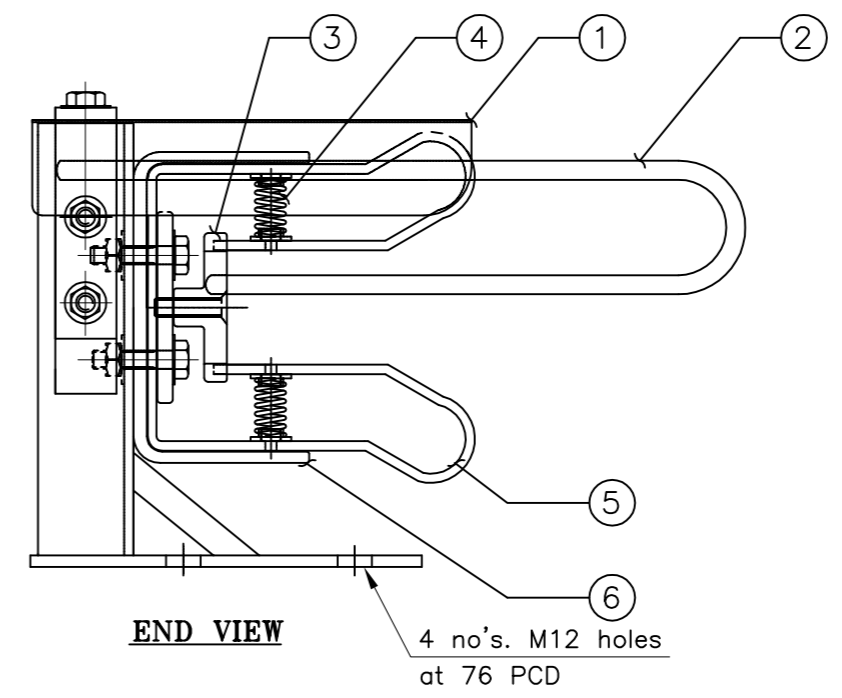
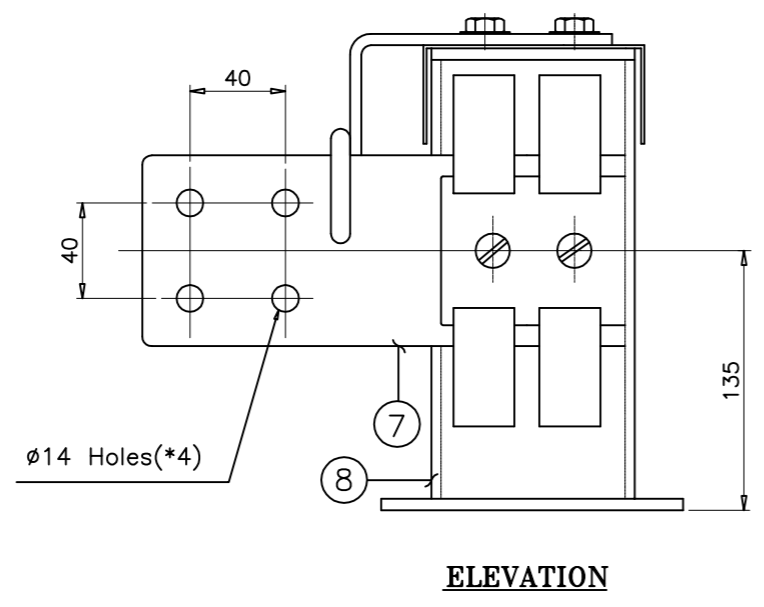
REF. STANDARD	IEC:62271-102 / IS:9921
WEIGHT (APPROX.)	KGS 410
CONTROL VOLTAGE DC	V 220
CROSS	kg -
TL STRAIGHT	kg -
ACROSS	kVp 80
PF TO EARTH	kVp 70
ACROSS	kVp 195
LI TO EARTH	kVp 170
STC PEAK	kAp 62.5
FOR 1 Sec	kA 25
CURRENT	A 800
VOLTAGE	kV 33
DESCRIPTION	UNIT VALUE
TECHNICAL DATA	

DRN	YVG	04.06.22		SWITCHGEAR MANUFACTURING COMPANY	
CHKD	VK	04.06.22		GANDRAJUPALLE, CHITTOOR DIST, A.P, INDIA.	
APPD	OJA	04.06.22	TITLE	GENERAL ARRANGEMENT OF	
DEPT	SIGN	DATE	33KV 800A DBR DISCONNECTOR WITHOUT EARTH SWITCH		
SC: NTS	Paper size	A3	DRG.NO. STD - 3300001	SHEET 1 OF 1	REV. 0

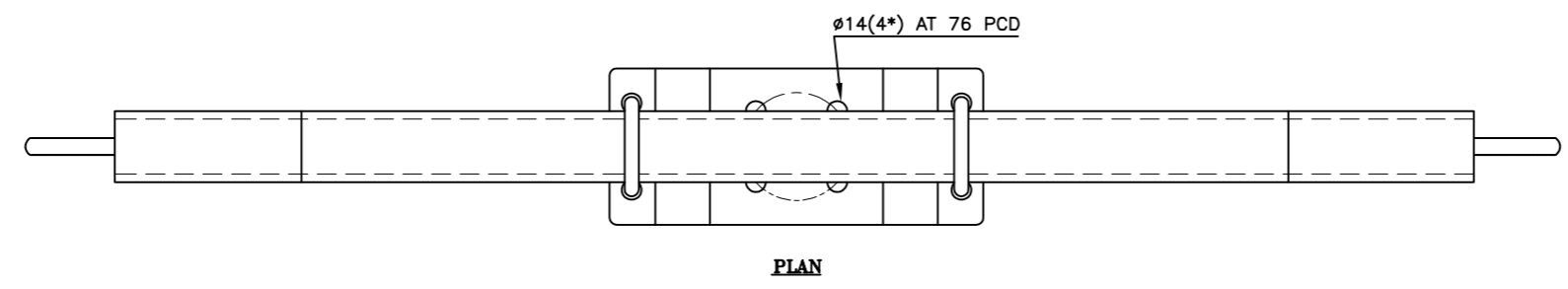
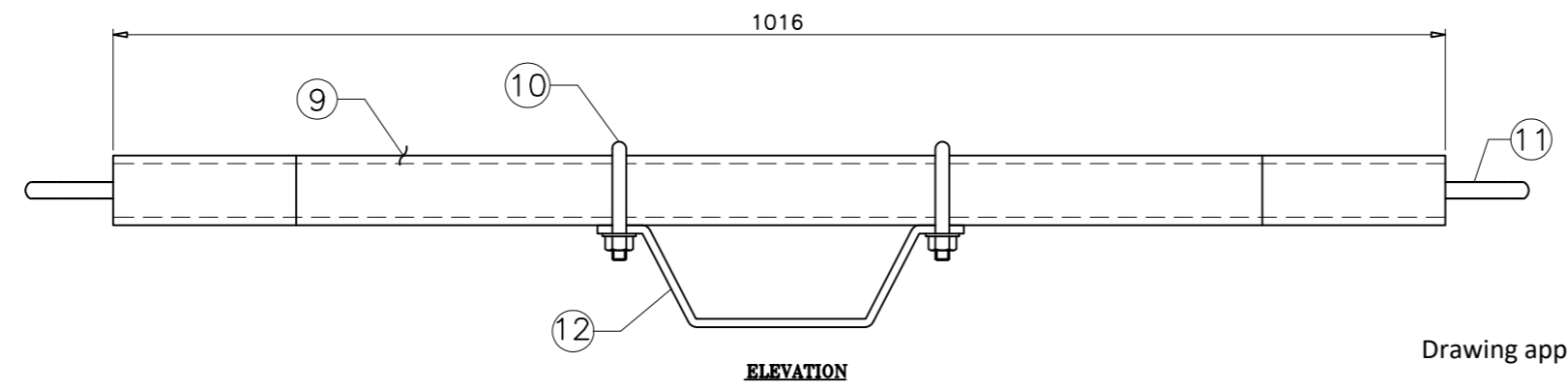
NOTE:- THIS COMPLETE SET OF DRAWINGS ARE REPRESENTATIVE OF THE LATEST TYPE TEST REPORT AND PROPRIETARY DESIGN, RESEARCH & DEVELOPMENT OF SWITCHGEAR MANUFACTURING COMPANY PVT. LTD. GANDRAJUPALLE. THE DESIGNS SHALL NOT BE REPRODUCED WITHOUT WRITTEN CONSENT OF SWITCHGEAR MANUFACTURING COMPANY PVT. LTD. GANDRAJUPALLE.

NOTE: 1. Drawings Approval subject to valid type test reports, to be checked during acceptance tests.
2. For EPC contractors only.

DETAILS OF FIXED CONTACT



1. Minimum 300mm plinth shall be maintained for CT/PT/CVT/Isolators/IV/LA/Breakers in the substation during foundation works to ensure safe live to ground clearance per IE rules.
2. Since the supply of terminal connectors is not in the scope of manufacturer as mentioned in the drawings. The EPC contractor shall be instructed to supply the same line with CT/PT/CVT/Isolator/IVT/LA/Breaker's requirement and compatibility.



CHIEF ENGINEER/PROJECTS
APTRANSCO/VS/VIJAYAWADA

Drawing approval subject to valid vendor registration

PART LIST

1. FC rain hood(Al.)
2. FC Arcing horn (MS HDG)
3. Spacer (AL.)
4. FC spring (SS)
5. FC Jaw (2Nos 32x4mm Cu.Flat)
6. Jaw back strip (MS HDG)
7. Jumper pad (75x12mm Al.)
8. Supporting channel (MS HDG)
9. MC arm (38 OD, 30 ID Cu.tube)
10. MC Clamp (HDG)
11. MC Arcing horn (MS HDG)
12. MC HOLDER(MS HDG)

- NOTES**
1. All dimensions are in 'mm'
 2. All ferrous parts are hot-dip galvanized
 3. All non-ferrous contact points are silver plated upto 15 microns
 4. Tolerances
 - (i) Upto 50mm --- ±3%
 - (ii) 51 to 100 mm --- ±2%
 - (iii) 101 to 300mm --- ±1%
 - (iv) Above 300mm --- ±0.5%
 5. Bolted area are Tin plated up to 10 microns to avoid bi-metallic reaction between Cu & Al

Sl.No.	Cross section	Area	Current Rating	Current Density (Amps/sq.mm)
1	(FC JAWS) 32X4X4	512mm ²	800A	1.56
2	(MC ARM) 38 OD X 30 ID	427.04mm ²	800A	1.87
2	JUMPER PAD (75X12)	900mm ²	800A	0.88

DRN	YVG	04.06.22	SWITCHGEAR MANUFACTURING COMPANY GANDRAJUPALLE, CHITTOOR DIST, A.P, INDIA.
CHKD	VK	04.06.22	
APPD	OJA	04.06.22	
DEPT	SIGN	DATE	TITLE
SC: NTS	Paper size A3	DRG.NO. S T D - 3 3 0 0 0 0 2	MAIN CONTACT DETAILS (FOR 33KV 800A DBR DISCONNECTOR)
			SHEET 1 OF 1
			REV. 0

NOTE:- THIS COMPLETE SET OF DRAWINGS ARE REPRESENTATIVE OF THE LATEST TYPE TEST REPORT AND PROPRIETARY DESIGN, RESEARCH & DEVELOPMENT OF SWITCHGEAR MANUFACTURING COMPANY PVT. LTD. GANDRAJUPALLE. THE DESIGNS SHALL NOT BE REPRODUCED WITHOUT WRITTEN CONSENT OF SWITCHGEAR MANUFACTURING COMPANY PVT. LTD. GANDRAJUPALLE.

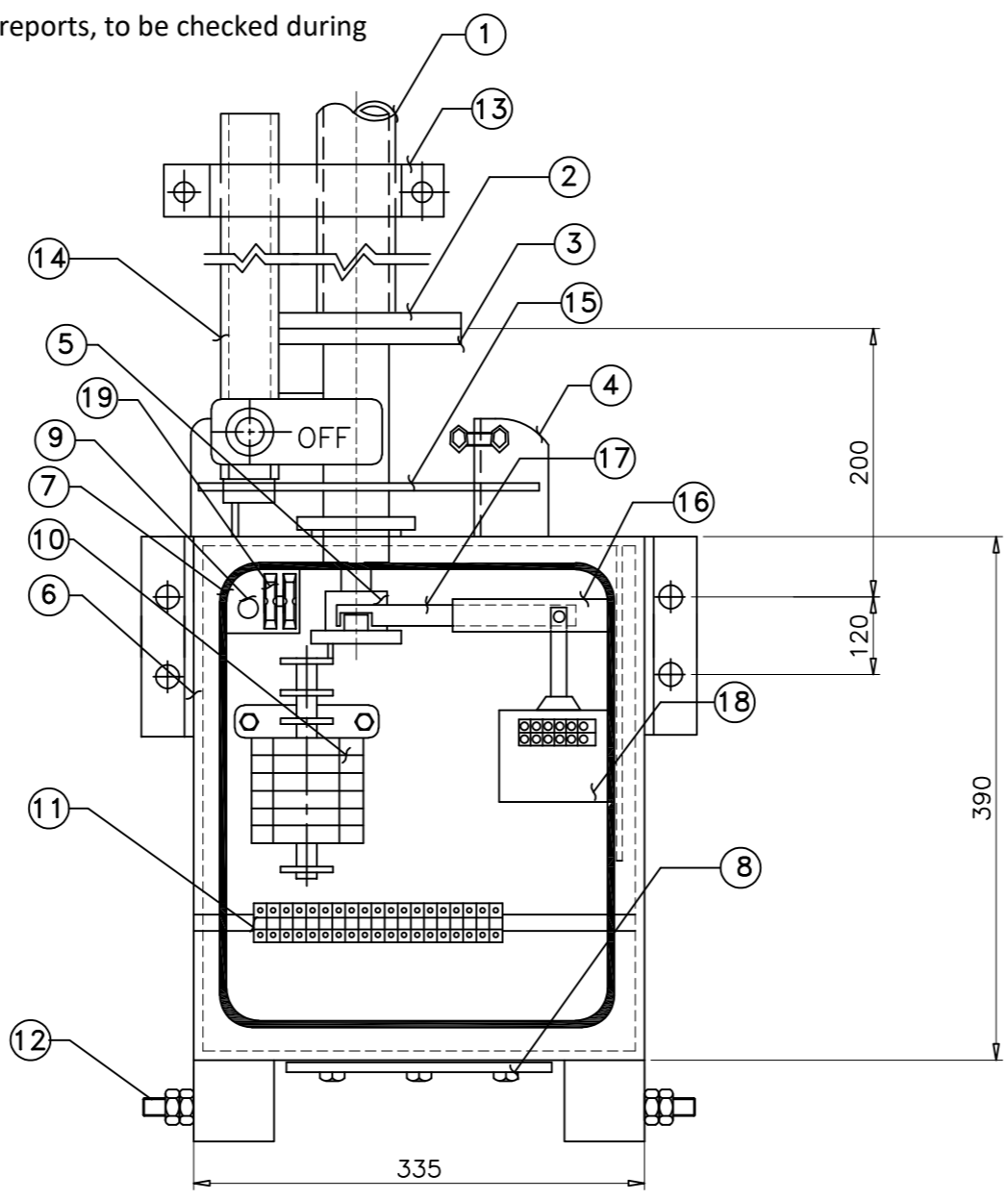
NOTE: 1. Drawings Approval subject to valid type test reports, to be checked during acceptance tests.
 2. For EPC contractors only.

PART LIST

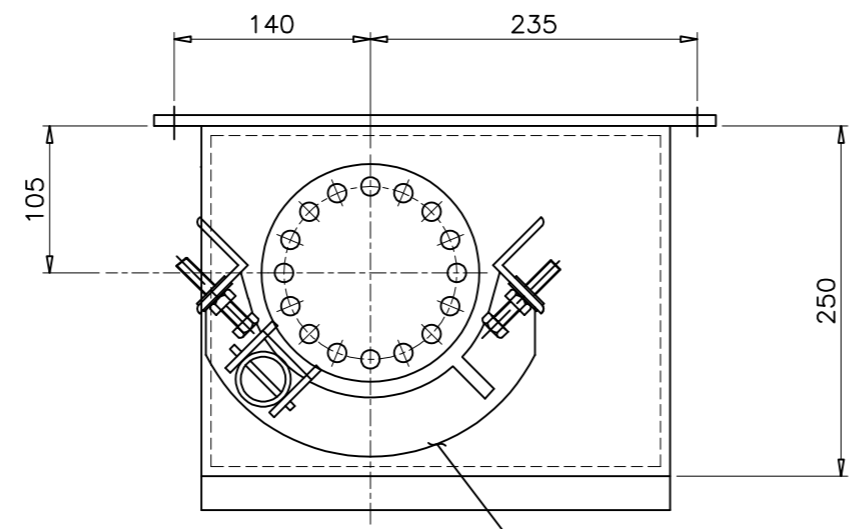
1. Down pipe
2. Flange (12Holes)
3. Flange (14Holes)
4. ON & OFF stopper
5. Locking block
6. Cubicle(3mm Al.Sheet)
7. Rubber liner for dust & weather proof
8. Cable gland fixing plate
9. Push button switch
10. Aux.switch (4NO + 4NC)
11. Terminal block (CTS4UN)
12. Earthing terminal
13. Provision for padlock (without lock)
14. Operating handle
15. Lock plate (For handle lock)
16. Plunger guide
17. Plunger
18. Solenoid
19. Fuses(5A)

INSTRUCTIONS:

- 1 Do not operate the main switch when breaker is at 'ON' position
- 2 To charge solenoid press push button. the solenoid is charged i.e mechanism is free to operate.
- 3 Do not padlock main switch unless interlocking plunger does not fall into provided slot.
- 4 Release push button to discharge solenoid.



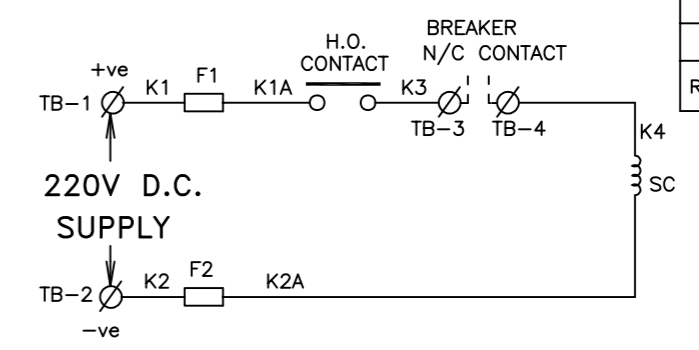
ELEVATION



PLAN

Drawing approval subject to valid vendor registration

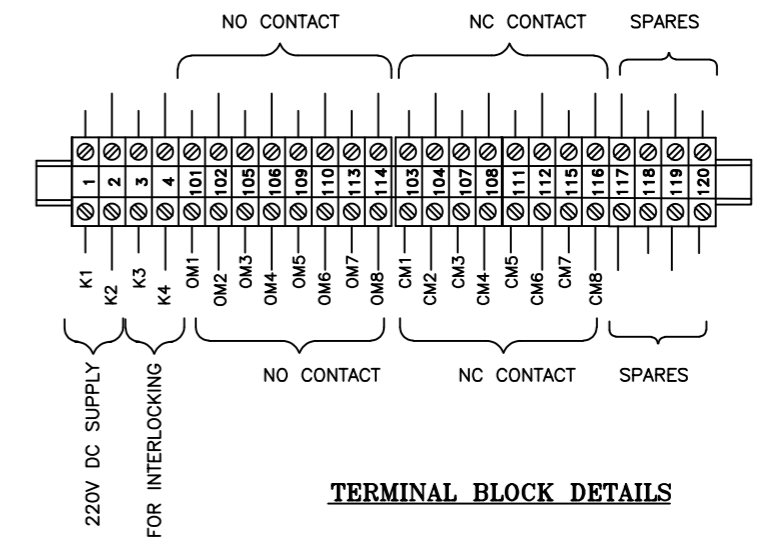
**CHIEF ENGINEER/PROJECTS
APTRANSCO/VISVIJAYAWADA**



SCHEMATIC DIAGRAM

LEGEND

- F1,F2 --- Fuses for control supply
- H.O.contact --- Hand operated control
- S.C. --- Solenoid coil



TERMINAL BLOCK DETAILS

NOTES:-

- 1 All dimensions are in 'mm'
- 2 Cubicle will be painted to shade no. 631 of IS:5
- 3 Internal wiring will be done with 2.5 sq.mm cu.stranded conductor & 10% spare terminals will be provided
- 4 All ferrous parts are hot dip galvanised
- 5 Net weight of the box-28 Kgs(approx)

DRN	YVG	04.06.22	SWITCHGEAR MANUFACTURING COMPANY GANDRAJUPALLE, CHITTOOR DIST, A.P, INDIA.
CHKD	VK	04.06.22	
APPD	OJA	04.06.22	
DEPT	SIGN	DATE	TITLE
	SC: NTS	Paper size A3	GENERAL ARRANGEMENT OF MANUAL OPERATING MECHANISM FOR DISCONNECTOR
DRG.NO. S T D - 3 3 0 0 0 0 3			SHEET 1 OF 1
			REV. 0

NOTE:- THIS COMPLETE SET OF DRAWINGS ARE REPRESENTATIVE OF THE LATEST TYPE TEST REPORT AND PROPRIETARY DESIGN, RESEARCH & DEVELOPMENT OF SWITCHGEAR MANUFACTURING COMPANY PVT. LTD. GANDRAJUPALLE. THE DESIGNS SHALL NOT BE REPRODUCED WITHOUT WRITTEN CONSENT OF SWITCHGEAR MANUFACTURING COMPANY PVT. LTD. GANDRAJUPALLE.

NOTE: 1. Drawings Approval subject to valid type test reports, to be checked during acceptance tests.
2. For EPC contractors only.

1. Minimum 300mm plinth shall be maintained for CT/PT/CVT/Isolators/IV/LA/Breakers in the substation during foundation works to ensure safe live to ground clearance per IE rules.
2. Since the supply of terminal connectors is not in the scope of manufacturer as mentioned in the drawings. The EPC contractor shall be instructed to supply the same line with CT/PT/CVT/Isolator/IVT/LA/Breaker's requirement and compatibility.

REV	DATE	CHANGES MADE	SIG

SWITCHGEAR MANUFACTURING COMPANY

GANDRAJUPALLE, CHITTOR DIST, A.P., INDIA.

CUSTOMER TRANSMISSION CORPORATION OF ANDHRA PRADESH LIMITED

SL.No.	(*)	TYPE	DBR
VOLTAGE (kV)	33	CURRENT (Amps)	800
STC (kA-sec-kAp)	25-1-62.5	IMPULSE (kVp)	170
DC VOLTAGE (V)	220	PF VOLTAGE (kV)	70
DRIVE	MANUAL	FREQUENCY (Hz)	50
YEAR	(*)		

FOR DISCONNECTOR

(**) TO BE MARKED AT THE TIME OF MANUFACTURING

Drawing approval subject to valid vendor registration

**CHIEF ENGINEER/PROJECTS
APTRANSCO/VS/VIJAYAWADA**

NOTE:

1. ALL DIMENSIONS ARE IN MM
2. MATERIAL : ALUMINIUM ALLOY
3. TOLERANCE AS PER GA DRAWING
4. LETTER ITCHED ON BLACK BACKGROUND

DRN	YVG	04.06.22		SWITCHGEAR MANUFACTURING COMPANY
CHKD	VK	04.06.22		GANDRAJUPALLE, CHITTOOR DIST, A.P, INDIA.
APPD	OJA	04.06.22	TITLE	NAME PLATE DETAILS
DEPT	SIGN	DATE	(FOR 33kV DBR DISCONNECTOR)	
SC: NTS		Paper size A3	DRG.NO. S T D -	3 3 0 0 0 0 4
			SHEET	REV.
			1 of 1	0

NOTE: 1. Drawings Approval subject to valid type test reports, to be checked during acceptance tests.

2. For EPC contractors only
SWITCHGEAR MANUFACTURING COMPANY PRIVATE LIMITED

CLIENT	:	TRANSMISSION CORPORATION OF ANDHRA PRADESH LIMITED
--------	---	--

GUARANTEED TECHNICAL PARTICULARS FOR 33kV DBR DISCONNECTOR

Sl. No.	Description	Particulars
1.	Type / Installation	Horizontal Double Break, Outdoor
2.	Manufacturer's name and place of Manufacture	Switchgear Manufacturing Company Pvt. Ltd. Gandrajupalle, Chittoor Dist, A.P, India.
3.	Standards according to which the isolators are manufactured	IS: 9921 (Part I to V) / IEC: 62271-102
4.	Maximum design voltage at which the isolator can operate (kV)	36
5.	Frequency (Hz)	50
6.	Rated Voltage (kV)	33
7.	Maximum current that can be safely Interrupted By the isolator	Inductive – 0.7 A at – 0.15 p. f. (Assigned value) Capacitive – 0.7 A at – 0.15 p. f. (Assigned value)
8.	Continuous current rating Nominal (Amps) under site conditions (Amps)	800 Amps As required
9.	Rated short time current	
	i) for 1 second (kA rms)	25
	ii) Rated peak short time current (kAp)	62.5
10.	Current density at the minimum cross Section of	
	a) Moving blade (Amps/sq. mm) : Copper tube	2.0
	b) Terminal pad (Amps/sq. mm) : Aluminum	1.0
	c) Contacts (Amps/sq. mm) : Copper Flat	1.6
	d) Terminal connector (Amps/sq. mm): Aluminum Alloy	1.0
11.	Maximum Temp. rise of current carrying parts when carrying rated current continuously (deg.C)	Within the Limits as per Table 4 of IS : 9921 (Part-II) of 1982 / Table 3 of IEC 62271-1
12.	Derating factor for specified site conditions	Unity
13.	Insulation levels	
	i) Impulse withstand voltage (kV peak)	
	a) Phase to Earth	170
	b) Isolating Distance	195
	ii) Switching surge withstand voltage (kV peak)	
	a) Phase to Earth	Not Applicable
	b) Isolating Distance	Not Applicable
	iii) Power Frequency withstand voltage (kV rms)	
	a) Phase to Earth	70
	b) Isolating Distance	80
14.	Minimum clearance in air	
	i) Between poles (mm)	Phase spacing being 1300 mm
	ii) Between live parts and earth (mm)	Equal to the height of Insulators selected
	iii) Between live parts when switch is open	
	a) One the same pole (mm)	For center-to-center distance of 915 mm
	b) Between adjacent poles (mm)	1300 mm
15.	Rated mechanical terminal load	
	i) Load along the terminal connector side (Kg.)	Values not specified in Table 7 of IS: 9921 (Part II) of 1982
	ii) Load across the terminal connector side (Kg.)	
16.	Torque required to operate the switch in Kg-m	36
17.	Contact zone	Not Applicable
18.	Design and construction	
	i) No. of insulators per pole	3
	ii) No. of breaks per pole	2
	iii) Type of closing/opening mechanism (Horizontal/vertical) break straight etc.	Horizontal
	iv) Contacts	
	a) Material and grade	Hard drawn Electrolytic copper, Contact surface is silver plated
	b) Cross-sectional area (Sq. mm)	512 for 800 Amps
	v) Moving blades	
	a) Material and grade	Hard drawn Electrolytic copper, Ends are silver plated
	b) Cross-sectional area(mm)	427 for 800 Amps
	vi) Contact support	
	a) Type of contacts	Banging type

acceptance tests.

2.For EPC contractors only.

SWITCHGEAR MANUFACTURING COMPANY PRIVATE LIMITED

CLIENT	:	TRANSMISSION CORPORATION OF ANDHRA PRADESH LIMITED
--------	---	--

	a)	Material and size of plate	M.S. plate, 6 mm HDG.
vii)		Rain hood-material grade and size	Aluminum sheet, 1mm THK
viii)			
	a)	Material and size of clamps	NA
	b)	Material size of springs	NA
	b)	Whether springs are encased	NA
ix)		Nuts and Bolts	
	a)	Size, Material and grade in live parts	Less than 5/8" dia. Stainless steel
	b)	Size, Material and grade in other parts	3/8" dia & above hot dip galvanised
x)		Insulator base plate Material and size of Plate below insulators	100X50X5MM THK M.S. Channel (HDG)
xi)		Bearings	
	a)	Material and size of housing	Gravity die cast Aluminium/MS Fabricated (HDG)
	b)	No. of bearings, location and Size	2 Nos. – below the rotating post Insulator with 32 mm shaft dia.
xii)		Tandem pipe	
	a)	Size, class and No. of pipes	1 No. – 25NB class B. G.I. pipes. of length as per the GA.
	b)	Size of shackle, screw	16 mm dia
	c)	No. of bearings / bush and its material and size	Brass Bush – 2 Nos. suitable for 16 mm dia Stud.
xiii)		Type of interlock	Electrical between Main Switch & Corresponding circuit breaker
xiv)		Down pipe size and class	40 NB. Class B G.I. pipe
xv)		Type of universal/swivel joint	
	a)	Between bearings and down pipe	Flange type
	b)	Between down pipe and operating mechanism	Vernier type flange
xvi)		Operating Mechanism	3mm Aluminium
xvii)		Base	
	a)	Size of steel sections used	100 mm x 50 mm
	b)	Overall size	100 mm x 50 mm x 1065 mm
	c)	Total weight	10 Kg (one pole) approx.

For Switchgear Manufacturing Co. Pvt. Ltd.



Authorized Signatory

Drawing approval subject to valid vendor registration

1. Minimum 300mm plinth shall be maintained for CT/PT/CVT/Isolators/IV/LA/Breakers in the substation during foundation works to ensure safe live to ground clearance per IE rules.
2. Since the supply of terminal connectors is not in the scope of manufacturer as mentioned in the drawings. The EPC contractor shall be instructed to supply the same line with CT/PT/CVT/Isolator/IVT/LA/Breaker's requirement and compatibility.

CHIEF ENGINEER/PROJECTS
APTRANSCO/VS/VIJAYAWADA