

NOTE:- THIS COMPLETE SET OF DRAWINGS ARE REPRESENTATIVE OF THE LATEST TYPE TEST REPORT AND PROPRIETARY DESIGN, RESEARCH & DEVELOPMENT OF SWITCHGEAR MANUFACTURING COMPANY PVT. LTD. GANDRAJAPALLE. THE DESIGNS SHALL NOT BE REPRODUCED WITHOUT WRITTEN CONSENT OF SWITCHGEAR MANUFACTURING COMPANY PVT. LTD. GANDRAJAPALLE.

NOTE: 1. DRAWING APPROVAL SUBJECT TO VALID TYPE TEST REPORTS, TO BE CHECKED DURING ACCEPTANCE TESTS  
 2. FOR EPC CONTRACTS ONLY

Drawing approval subject to valid vendor registration

33Kv Horn gap fuse set with 25mm creepage

### LIST OF DRAWINGS

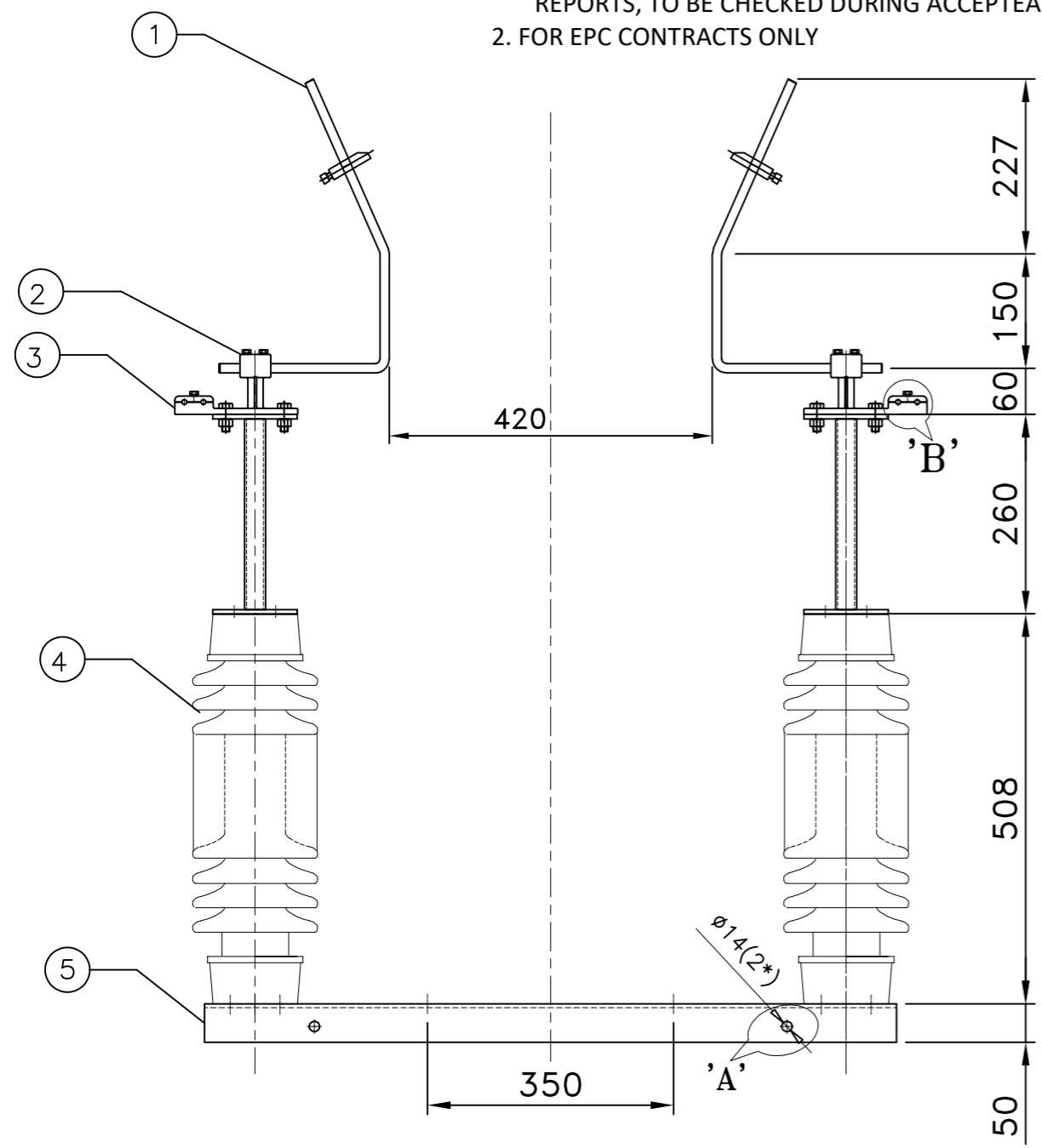
S NO.	TITLE	DRAWING NO.	REV	SHEET
1	GA OF 33kv 100A SP HORN GAP FUSE	STD-6110101	0	1 OF 1
2	GA OF 33kv 100A TP HORN GAP FUSE	STD-6110102	0	1 OF 1
3	SUPPORT INSULATOR FOR 33KV HG FUSE	STD-6110103	0	1 OF 1
4	TERMINAL CONNECTOR DETAILS (SUITABLE FOR ACSR SINGLE DOG)	STD-6110104	0	1 OF 1

**Chief Engineer/Projects**  
**APTRANSCO/VS/Vijayawada.**

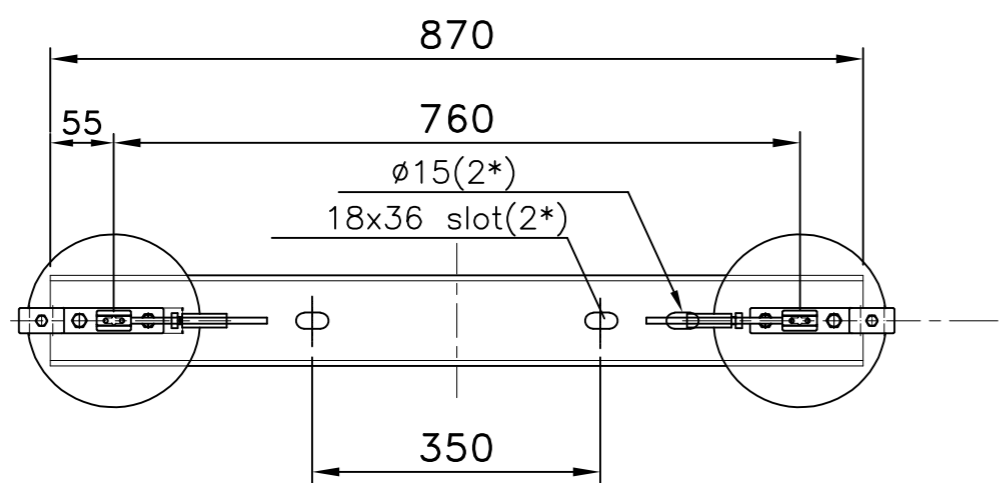
		CLIENT		TRANSMISSION CORPORATION OF ANDHRA PRADESH LIMITED.						
				DRN	BT	19.01.24		SWITCHGEAR MANUFACTURING COMPANY		
				CHKD	VK	19.01.24		GANDRAJUPALLE, CHITTOOR DIST, AP, INDIA		
				APPD	OJA	19.01.24		TITLE		
				DEPT	SIGN	DATE		MASTER LIST (FOR 33KV HG-FUSE)		
REV	DATE	CHANGES MADE	SIG		SCALE: NTS	Paper size A3	DRG.NO.	STD - 6110100	SHEET 1 OF 1	REV. 0

NOTE:- THIS COMPLETE SET OF DRAWINGS ARE REPRESENTATIVE OF THE LATEST TYPE TEST REPORT AND PROPRIETARY DESIGN, RESEARCH & DEVELOPMENT OF SWITCHGEAR MANUFACTURING COMPANY PVT. LTD. GANDRAJAPALLE. THE DESIGNS SHALL NOT BE REPRODUCED WITHOUT WRITTEN CONSENT OF SWITCHGEAR MANUFACTURING COMPANY PVT. LTD. GANDRAJAPALLE.

NOTE: 1. DRAWING APPROVAL SUBJECT TO VALID TYPE TEST REPORTS, TO BE CHECKED DURING ACCEPTANCE TESTS  
 2. FOR EPC CONTRACTS ONLY



33kV Horn gap fuse set with 25mm creepage



Drawing approval subject to valid vendor registration

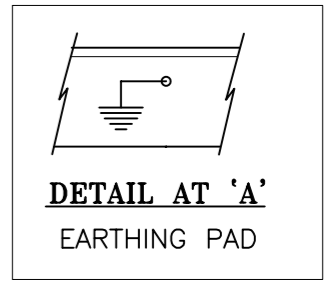
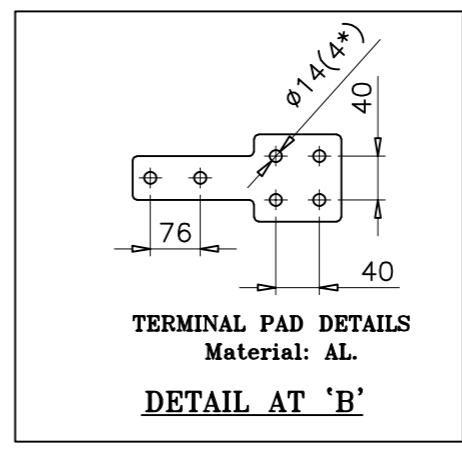
**PART LIST**

- 1 ARCING HORN(Ø10 Copper)
- 2 ARCING HORN HOLDER
- 3 JUMPER CONNECTOR (100X12 AL.)
- 4 SUPPORT INSULATOR
- 5 BASE CHANNEL (100x50)

**NOTES**

- 1. ALL DIMENSIONS ARE IN 'MM'
- 2. ALL FERROUS PARTS ARE HOT DIP GALVANIZED
- 3. MOUNTING FASTENERS ARE NOT IN THE SCOPE OF OUR SUPPLY.
- 4. MANUFACTURING TOLERANCES
  - i) UPTO 50mm-- ±3%
  - ii) 51 to 100mm-- ±2%
  - iii) 101 to 300mm-- ±1%
  - iv) ABOVE 300mm-- ±0.5%
- 5. MAIN GAP (M) CAN BE ADJUSTED AS PER THE REQUIREMENT
- 6. Creepage distance shall be 900mm.

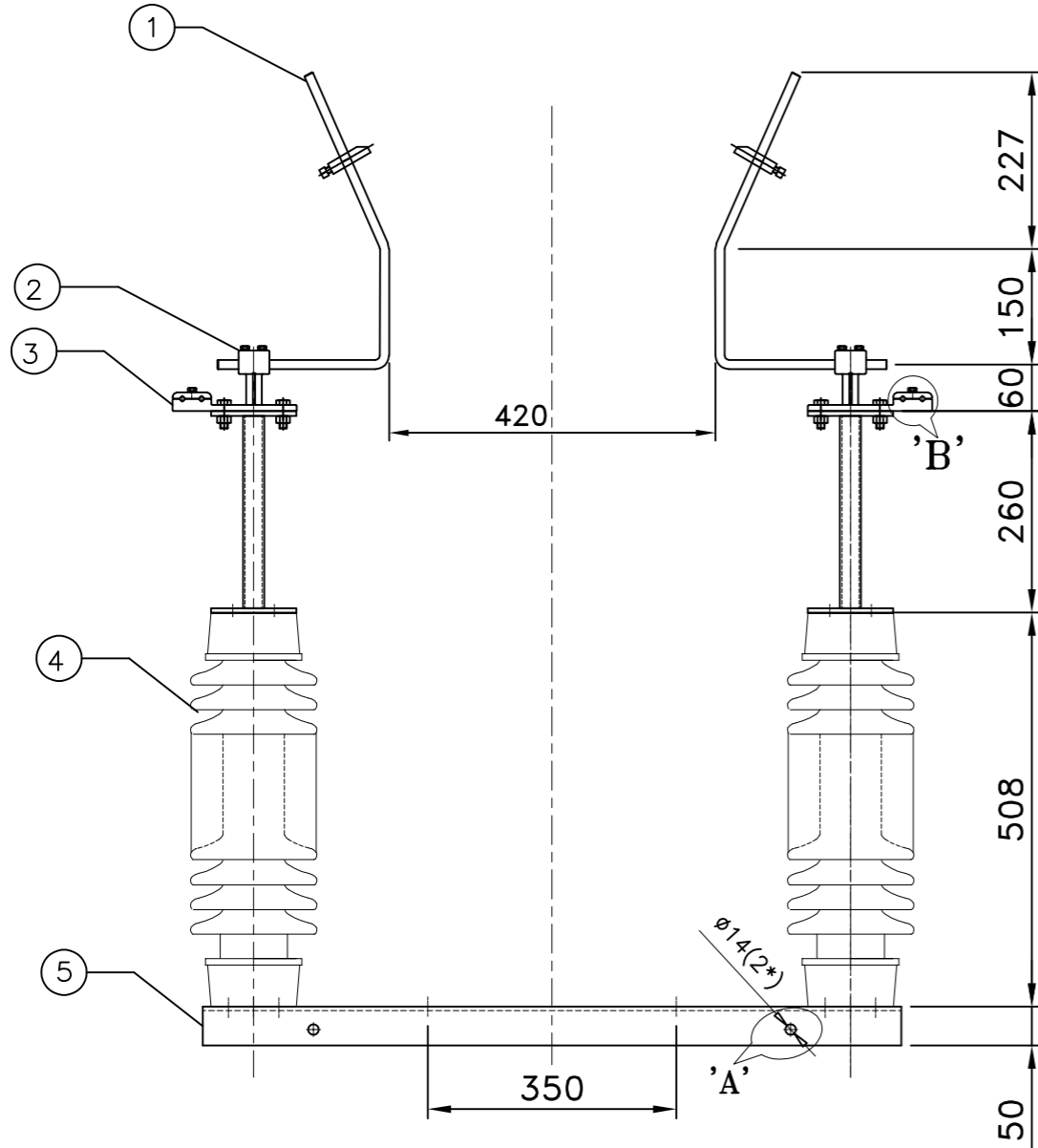
**Chief Engineer/Projects  
APTRANSCO/VS/Vijayawada.**



				CLIENT	TRANSMISSION CORPORATION OF ANDHRA PRADESH LIMITED.					
				DRN	BT	19.01.24	<b>SWITCHGEAR MANUFACTURING COMPANY</b> GANDRAJUPALLE, CHITTOOR DIST, AP, INDIA			
				CHKD	VK	19.01.24				
				APPD	OJA	19.01.24				
				DEPT	SIGN	DATE				
REV	DATE	CHANGES MADE	SIG	SCALE: NTS		Paper size	TITLE	SHEET	REV.	
						A3	GENERAL ARRANGEMENT OF <b>33kV 100A SP HORN GAP FUSE</b>	DRG.NO. S T D - 6 1 1 0 1 0 1	1 OF 1	0

NOTE:- THIS COMPLETE SET OF DRAWINGS ARE REPRESENTATIVE OF THE LATEST TYPE TEST REPORT AND PROPRIETARY DESIGN, RESEARCH & DEVELOPMENT OF SWITCHGEAR MANUFACTURING COMPANY PVT. LTD. GANDRAJAPALLE. THE DESIGNS SHALL NOT BE REPRODUCED WITHOUT WRITTEN CONSENT OF SWITCHGEAR MANUFACTURING COMPANY PVT. LTD. GANDRAJAPALLE.

NOTE: 1. DRAWING APPROVAL SUBJECT TO VALID TYPE TEST REPORTS, TO BE CHECKED DURING ACCEPTANCE TESTS  
 2. FOR EPC CONTRACTS ONLY

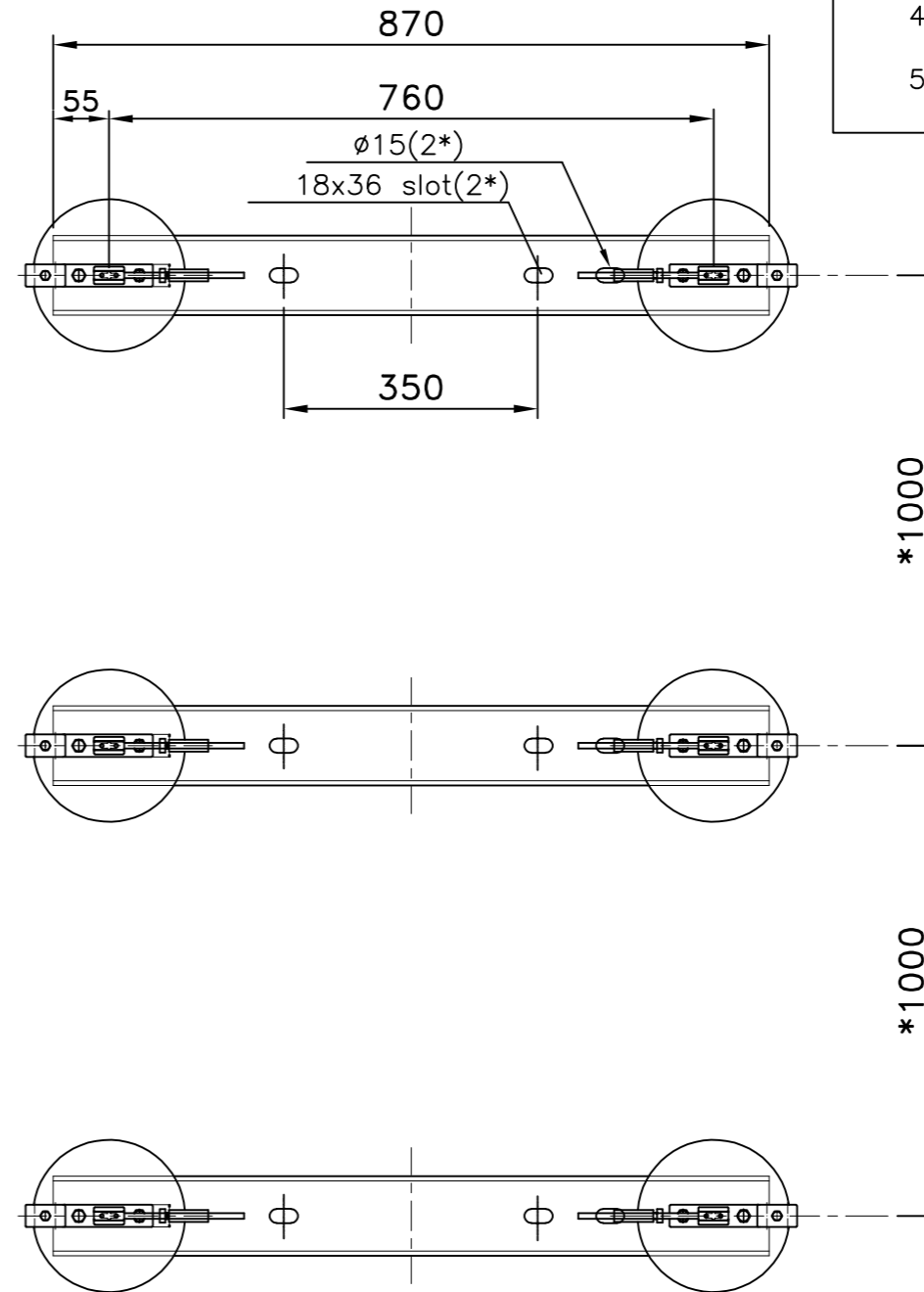


33kV Horn gap fuse set with 25mm creepage

**NOTES**

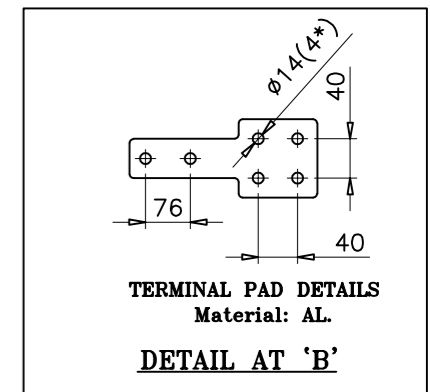
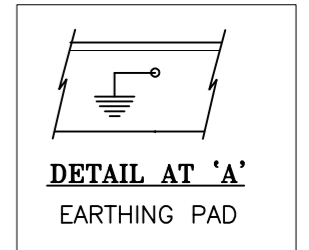
1. ALL DIMENSIONS ARE IN 'MM'
2. ALL FERROUS PARTS ARE HOT DIP GALVANIZED
3. MOUNTING FASTENERS ARE NOT IN THE SCOPE OF OUR SUPPLY.
4. MANUFACTURING TOLERANCES
  - i) UPTO 50mm -- ±3%
  - ii) 51 to 100mm -- ±2%
  - iii) 101 to 300mm -- ±1%
  - iv) ABOVE 300mm -- ±0.5%
5. MAIN GAP (M) CAN BE ADJUSTED AS PER THE REQUIREMENT
6. CREEPAGE DISTANCE SHALL BE 900MM.
7. \* BASED ON PROJECT REQUIREMENT

Drawing approval subject to valid vendor registration



**PART LIST**

- 1 ARCING HORN(∅10 Copper)
- 2 ARCING HORN HOLDER
- 3 JUMPER CONNECTOR (100X12 AL.)
- 4 SUPPORT INSULATOR
- 5 BASE CHANNEL (100x50)



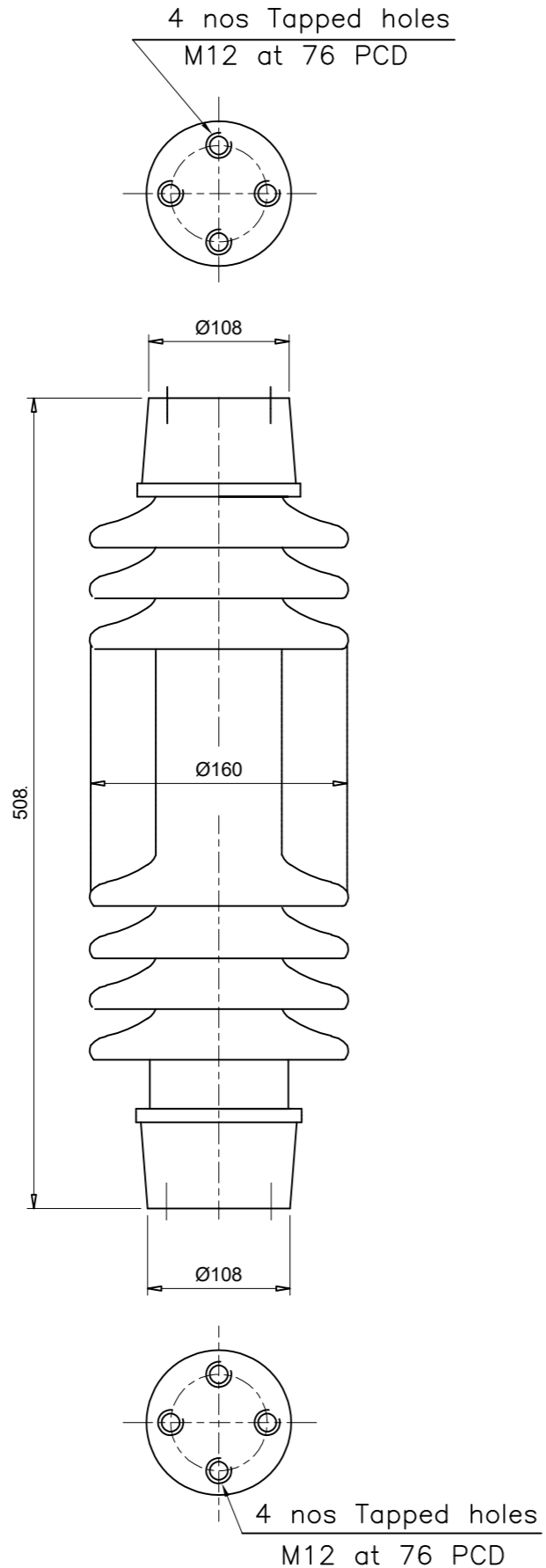
**Chief Engineer/Projects**  
**APTRANSCO/VS/Vijayawada.**

				CLIENT	TRANSMISSION CORPORATION OF ANDHRA PRADESH LIMITED.					
				DRN	BT	19.01.24	<b>SWITCHGEAR MANUFACTURING COMPANY</b> GANDRAJUPALLE, CHITTOOR DIST, AP, INDIA			
				CHKD	VK	19.01.24				
				APPD	OJA	19.01.24				
				DEPT	SIGN	DATE				
REV	DATE	CHANGES MADE	SIG	SCALE: NTS		Paper size	TITLE	SHEET	REV.	
						A3	GENERAL ARRANGEMENT OF <b>33kV 100A TP HORN GAP FUSE</b>	DRG.NO. S T D - 6 1 1 0 1 0 2	1 OF 1	0

NOTE: 1. DRAWING APPROVAL SUBJECT TO VALID TYPE TEST REPORTS, TO BE CHECKED DURING ACCEPTANCE TESTS  
2. FOR EPC CONTRACTS ONLY

Drawing approval subject to valid vendor registration

NOTE:- THIS COMPLETE SET OF DRAWINGS ARE REPRESENTATIVE OF THE LATEST TYPE TEST REPORT AND PROPRIETARY DESIGN, RESEARCH & DEVELOPMENT OF SWITCHGEAR MANUFACTURING COMPANY PVT. LTD. GANDRAJAPALLE. THE DESIGNS SHALL NOT BE REPRODUCED WITHOUT WRITTEN CONSENT OF SWITCHGEAR MANUFACTURING COMPANY PVT. LTD. GANDRAJAPALLE.



### TECHNICAL PARTICULARS

#### DIMENSIONS

- |                              |                                     |       |
|------------------------------|-------------------------------------|-------|
| 1. Height                    | mm                                  | 508±1 |
| 2. Applicable standards      | IS:2511, IEC168-94, IEC273, IEC:815 |       |
| 3. Min. Creepage distance    | mm                                  | 900   |
| 4. Mini. Dry arcing distance | mm                                  | 380   |
| 5. Colour of Glaze           | BROWN                               |       |

#### MECHANICAL VALUES

- |                          |      |       |
|--------------------------|------|-------|
| i) Cantilever strength   | kgf  | 600   |
| ii) Compression strength | kgf  | 10000 |
| iii) Tensile strength    | kgf  | 5000  |
| iv) Torsional strength   | kgfm | 250   |

#### ELECTRICAL VALUES

- |                                       |          |     |     |
|---------------------------------------|----------|-----|-----|
| i) Power frequency flashover voltage  | Dry      | kV  | 125 |
|                                       | Wet      | kV  | 100 |
| ii) Power frequency withstand voltage | Dry      | kV  | 95  |
|                                       | Wet      | kV  | 80  |
| iii) Impulse flashover voltage        | positive | kVp | 210 |
|                                       | Negative | kVp | 225 |
| iv) Impulse withstand voltage         |          | kVp | 170 |
| v) Highest system voltage             |          | kV  | 36  |
| vi) Corona extinction voltage         |          | kVP | 27  |

33Kv Horn gap fuse set with 25mm creepage

#### GENERAL PARTICULARS

- |                                  |   |    |
|----------------------------------|---|----|
| i) Net weight per stack (Approx) | kg.                                       | 15 |
| ii) No. unit per stack           | No.                                       | 1  |
| ii) Standard specification       | IS:2544, IS:5350, IEC168, IEC273, IEC:815 |    |

#### NOTES

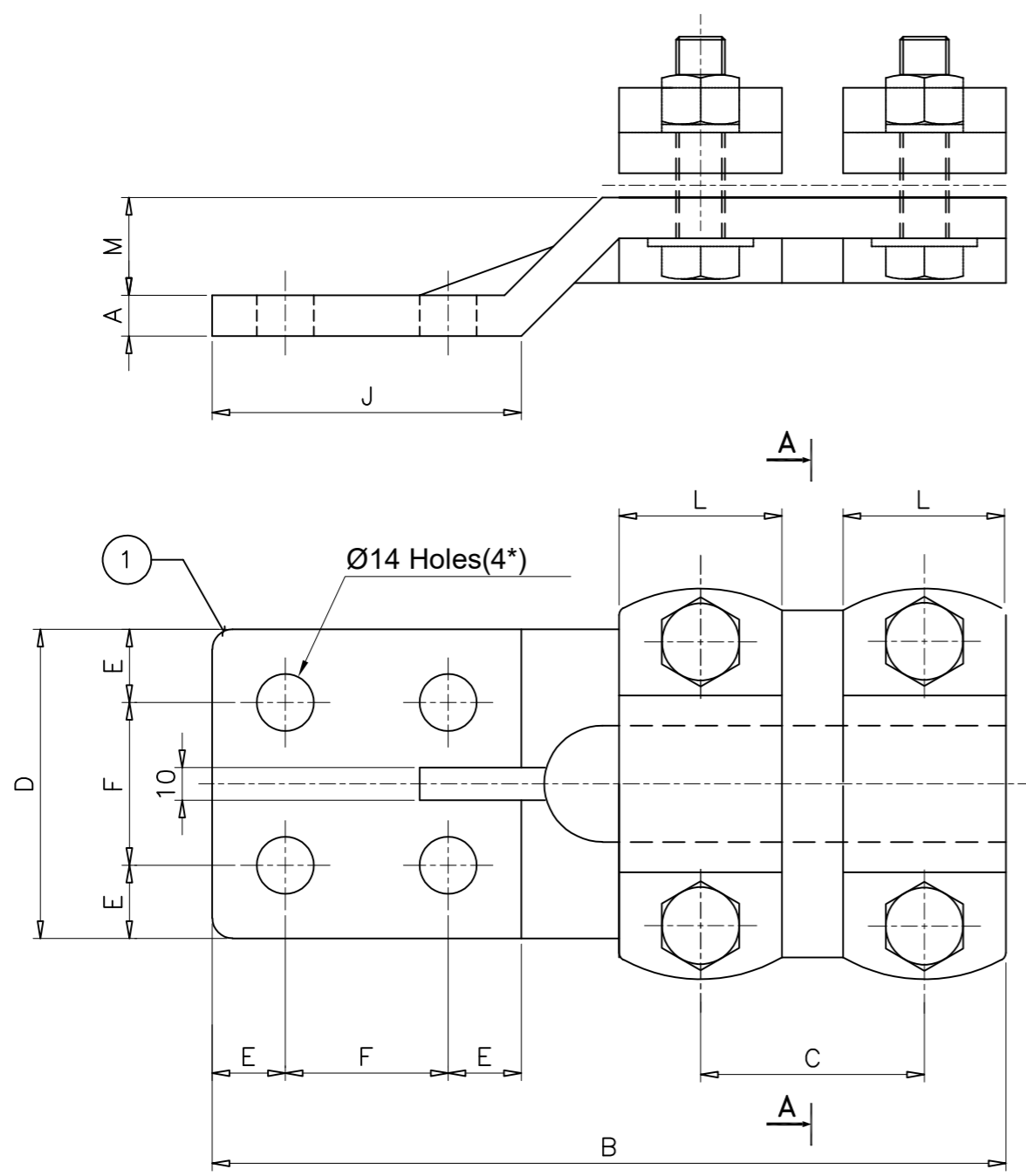
- i) All dimensions are in mm.
- ii) All ferrous parts are hot dip galvanized.

**Chief Engineer/Projects**  
**APTRANSCO/VS/Vijayawada.**

MANUFACTURER: ABIL/CJI/IEC/MEIL/SARAVANA/PRIME/MODERN

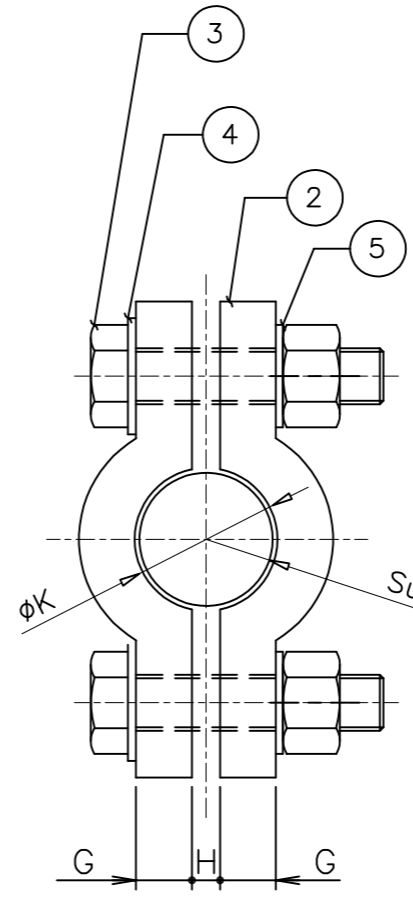
CLIENT		TRANSMISSION CORPORATION OF ANDHRA PRADESH LIMITED.					
DRN	BT	19.01.24		SWITCHGEAR MANUFACTURING COMPANY			
CHKD	VK	19.01.24		GANDRAJUPALLE, CHITTOOR DIST, AP, INDIA			
APPD	OJA	19.01.24		TITLE			
DEPT	SIGN	DATE	POST TYPE INSULATOR				
			(FOR 33KV HG FUSE )				
REV	DATE	CHANGES MADE	SIG	SCALE: NTS	Paper size	DRG.NO.	SHEET
					A3	S T D - 6 1 1 0 1 0 3	1 OF 1
							REV. 0

NOTE:- THIS COMPLETE SET OF DRAWINGS ARE REPRESENTATIVE OF THE LATEST TYPE TEST REPORT AND PROPRIETARY DESIGN, RESEARCH & DEVELOPMENT OF SWITCHGEAR MANUFACTURING COMPANY PVT. LTD. GANDRAJAPALLE. THE DESIGNS SHALL NOT BE REPRODUCED WITHOUT WRITTEN CONSENT OF SWITCHGEAR MANUFACTURING COMPANY PVT. LTD. GANDRAJAPALLE.



DIMENSIONS

A	B	C	D	E	F	G	H	J	ØK	L	M
12	210	55	75	17.5	40	12	4 to 6	76	14.15	40	25



SECTION-AA

Note:-

1. All dimensions are in mm.
2. Material: Al. alloy 4600 (A6).
3. Tolerance as per GA drawing.
4. All sharp corners are to be removed.

Drawing approval subject to valid vendor registration

33Kv Horn gap fuse set with 25mm creepage

Suitable for ACSR DOG Conductor

**Chief Engineer/Projects**  
**APTRANSCO/VS/Vijayawada.**

05	M12 SPRING WASHER	SPRING STEEL	4
04	M12 PLAIN WASHER	M.S.H.D.G	4
03	M12x50 BLOTS&NUTS	M.S.H.D.G	4
02	CLAMPING PIECE-II	AL.ALLOY	2
01	CLAMP BODY-I	AL.ALLOY	1
SLNo.	DESCRIPTION	MATERIAL	QTY

CLIENT: TRANSMISSION CORPORATION OF ANDHRA PRADESH LIMITED.

DRN	BT	19.01.24
CHKD	VK	19.01.24
APPD	OJA	19.01.24
DEPT	SIGN	DATE

**SWITCHGEAR MANUFACTURING COMPANY**  
GANDRAJUPALLE, CHITTOOR DIST, AP, INDIA

**TITLE**  
**TERMINAL CONNECTOR**  
(SUITABLE FOR ACSR SINGLE DOG)

REV	DATE	CHANGES MADE	SIG	SCALE: NTS	Paper size A3	DRG.NO. S T D - 6 1 1 0 1 0 4	SHEET 1 OF 1	REV. 0
-----	------	--------------	-----	------------	------------------	-------------------------------	-----------------	-----------

<b>CLIENT</b>	<b>: TRANSMISSION CORPORATION OF ANDHRA PRADESH LIMITED.</b>
---------------	--

**GUARANTEED TECHNICAL PARTICULARS FOR 33kV H.G.FUSE**

Sl. No.	Description	Particulars
1.	Applicable standard	IS: 9385-1983 (Part-IV) / IS: 9385-1979 (Part-I)
2.	Type	33kV H.G.Fuse
3.	Rated voltage (kV)	33/36 kV
4.	No. of poles	Single/Triple
5.	Rated normal current (Amp.)	100 A (Design Ambient Tem-50 Deg C)
6.	Rated Frequency (Hz.)	50 Hz
7.	Rated Lightning impulse i) To Earth & between phases ii) Across the pole distance	170 kV 195 kV
8.	Power frequency one minute withstand voltage i) To earth & between pole ii) Across the pole distance	70 kV 80 kV
9.	Rated line charging breaking current (A)	0.7 A
10.	Creepage distance	900 mm

For Switchgear Manufacturing Company Pvt. Ltd.



MANAGING DIRECTOR

NOTE: 1. DRAWING APPROVAL SUBJECT TO VALID TYPE TEST  
REPORTS, TO BE CHECKED DURING ACCEPTANCE TESTS  
2. FOR EPC CONTRACTS ONLY

Drawing approval subject to valid vendor registration

33Kv Horn gap fuse set with 25mm creepage

**Chief Engineer/Projects  
APTRANSCO/VS/Vijayawada.**