

NOTE : DRAWING APPROVAL SUBJECT TO VALID TYPE TEST REPORTS, TO BE

CHECKED DURING ACCEPTANCE TESTS. ANNEXURE – I

SHEET No.: 1 OF 7

GUARANTEED TECHNICAL PARTICULARS FOR 33 KV OIL IMMERSED CURRENT TRANSFORMERS

CTR : 400/1-1AMPS. (BAR PRIMARY)

01.	Type of tank/Installation	Live tank/Outdoor			
02.	Manufacturer's Name and address and Country of Manufacture	Vishal Transformers & Switchgears Pvt. Ltd., Rithani, Delhi Road, Meerut – 250 103, INDIA			
03.	Conforming to standard	IS: 16227:2016			
04.	Rated voltage/ highest voltage (KV rms)	33/36			
05.	Rated primary current (A)	400			
06.	Rated secondary current (A)	1 A			
07.	Ratio taps (on secondary side only)	No tapping			
08.	Type of insulation	A			
09.	Primary Stud/ Secondary Stud	Electrolytic Copper stud of 30 mm diameter X 80mm Length / M6 Nickle plated brass			
10.	Partial Discharge level	< 10 pc at Um < 5 pc at 1.2 Um/√3			
11.	Thickness of the matel tank	5mm top & bottom. 3.15mm tank side			
12.	Tank material and Tank coating	M.S. With paint shade 631 of IS-5			
13.	Hardware exposed to atmosphere	SS			
	Sealing arrangement(gasket & groove)	1. Insulator interfaces at top and base trolly using gasket. 2. Secondary terminals epoxy moulded block interfaces using gasket 3. Oil level indicator and primary stud interfaces with tank using gasket.			
14.	Porcelain housing and it's make (Single piece only as per clause 3.1.2)	Condenser type hollow insulator, CJI/ Genesis Make or any other standard make with cemented flange			
15.	Rated continuous thermal current	1.2 times continuous			
16.	Temperature rise over ambient	<50deg.centigrade			
17.	O-RING AND GASKETS	Nitrile Butyl Rubber			
18.	Acceptable limit of temperature	95 deg. C			
19.	Whether CT is hermetically sealed	yes			
20.	Rated short time withstand current for 1 sec. Duration (KA rms)	25			
21.	Rated dynamic withstand current (KAP)	62.5			
22.	Current density at STC Rating	<180 A/ sq.mm			
23.	1.2/50 micro second Impulse withstand voltage (KVP)	170			
24.	One minute power frequency withstand voltage (KV rms) of primary winding (Dry)	70			
25.	One minute power frequency withstand voltage of secondary winding (KV rms)	3 Chief Engineer Power Systems, Planning & Design APTranseo			
26.	a) Minimum total creepage distance of insulator bushing (mm)	900			
	b) Protected creepage of distance of bushing (mm)	400			
27.	Details of Core Core No.	Core-I Protection	Core-II Metering		
27.1	Current Ratios A/A	400/1	400/1		
27.2	Output burden (VA)	15	15		
27.3	Class of accuracy	5P	0.2S		

FOR EPC CONTRACTS ONLY

NOTE : DRAWING APPROVAL SUBJECT TO VALID TYPE TEST REPORTS, TO BE CHECKED DURING ACCEPTANCE TESTS.

SHEET No.: 2 OF 7

27.4	Instument Security Factor (ISF)		< 5		
27.5	Accuracy limit factor	10	-	-	-
27.6	Min. knee point voltage (kpv) at all ratio	-	-	-	-
27.7	Exciting current (Iext)	-	-	-	-
28	Weight of oil (Kg.)	11 ±2(Approx.			
29.	Weight of steel	28 Kgs (Approx)			
30.	Weight of copper	3 Kgs (Approx.)			
31.	Mounting details	400mmx 400mm.+/-2			
32.	Overall dimensions	As per GA Drawing			
33	Whether all O-rings/ gasket are fixed in grooves	yes			

Vishal Transformers & Switchgears (P) Ltd

(V.S. Negi)
G.M. (Marketing)

Chief Engineer
Power Systems, Planning & Design
APTransco

FOR EPC CONTRACTS ONLY

Drawing approval subject to valid vendor registration

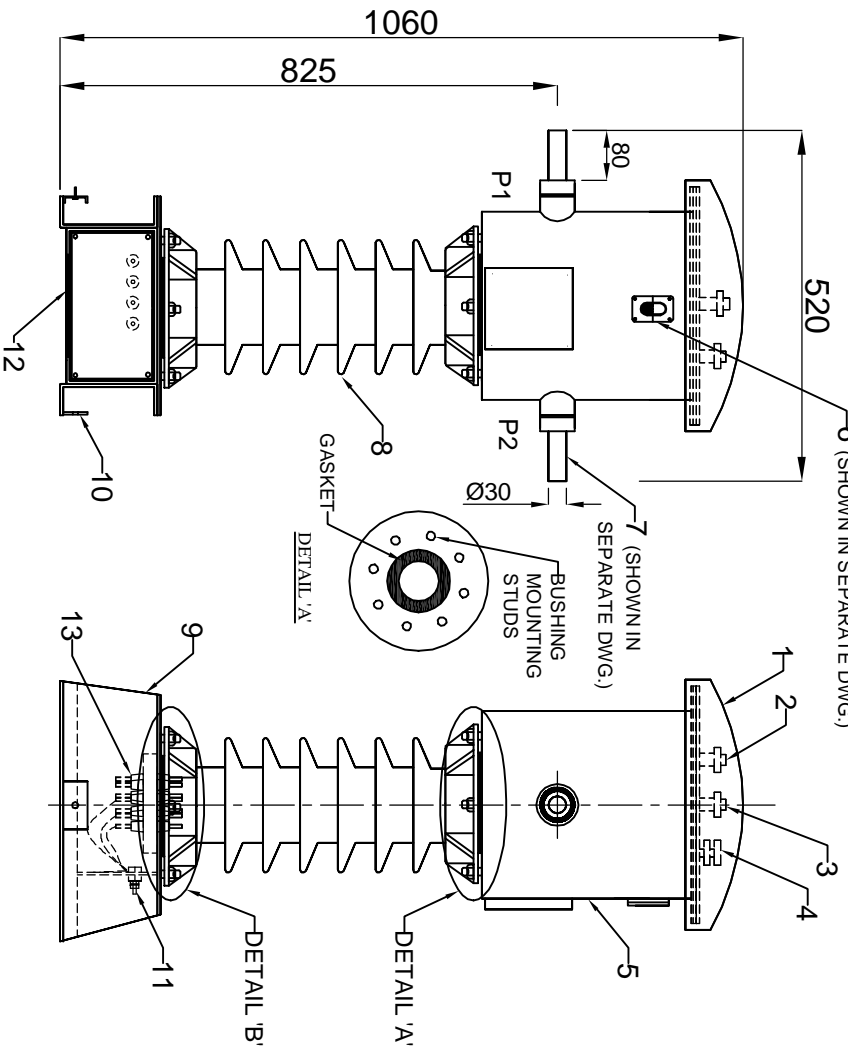
CHECKED DURING ACCEPTANCE TESTS,
6 (SHOWN IN SEPARATE DWG.)

BILL OF MATERIAL

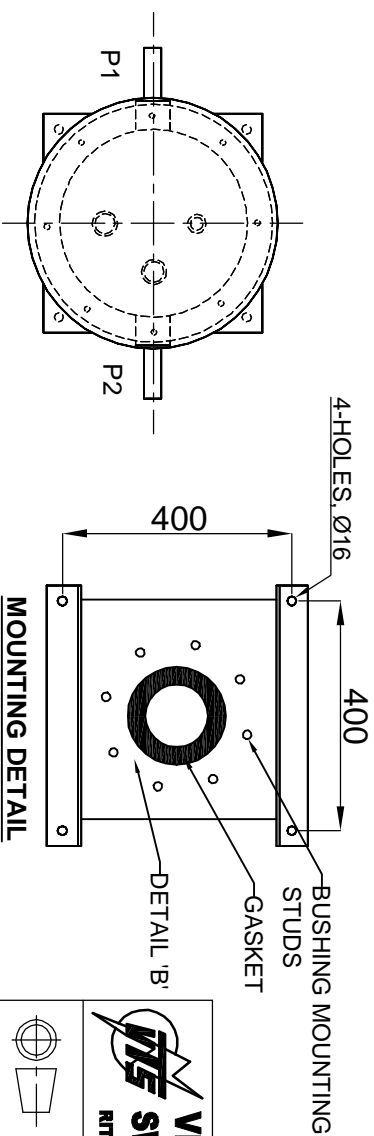
S.No.	ITEM	MATE. / SPEC.	QTY.
1.	DOME SHAPE RAIN COVER	M.S.	1No.
2.	OIL FILLING PORT	M.S. (HDG)	1No.
3.	NITROGEN VALVE	M.S. (HDG) / BRASS	1No.
4.	PRESSURE RELIEF VALVE (SPRING TYPE)	BRASS	1No.
5.	MAIN TANK	M.S. / S.S.	1No.
6.	OIL LEVEL INDICATOR	ALUMINIUM & GLASS	1No.
7.	PRIMARY TERMINAL	TINNED COPPER Ø30mm x 80mm LENGTH PORCELAIN/CI/GENESIS/ JAI PUR GLASS/ EOL.	2Nos.
8.	H.T. BUSHING WITH CEMENTED FLANGE	M.S.	1No.
9.	MOUNTING BASE	M.S.	1No.
10.	EARTHING PAD	M.S., 50 x 8 x 60(L)mm	2Nos.
11.	SECONDARY TERMINAL BOX (FOR CORE I & II)	NICKELLED BRASS, M6	1No.
12.	REMOVABLE GLAND PLATE WITHOUT HOLE	M.S.	1No.
13.	SECONDARY TERMINAL PLATE	EPOXY RESIN WITH NICKELLED BRASS STUDS / TEFLON WIRES	1No.

NOTE :-

1. CREEPAGE DISTANCE OF H.T. BUSHING :- 900 mm (MIN).
2. TANK SHALL BE PAINTED WITH MIN 2-COATS OF ZINC RICH EPOXY PRIMER & ONE COAT OF PU PAINT SHADE NO.- 631 OF IS : 5 EXTERNALLY.
3. THE INNER SURFACE SHALL BE PAINTED WITH OIL RESISTANCE PAINT.
4. ALL HARDWARES EXPOSED TO ATMOSPHERE SHALL BE SS.
5. ALL GASKET SHALL BE MADE OF NITRILE BUTYL RUBBER & HOUSED IN PROPERLY MACHINED GROOVES.
6. DETAIL 'A' & 'B' : GASKET ARRANGEMENT IN MACHINED GROOVE FOR BUSHING MOUNTING ON BOTH SIDE.



Drawing approval subject to valid vendor registration



VISHAL TRANSFORMERS & SWITCHGEARS (P) LTD.
 RTNANIL, DELHI ROAD, MEERUPT U.P (INDIA)

Chief Engineer
 Power Systems, Planning & Design
 APTransco

DRN.	NAME	SIGN.	DATE
VISHESH			
CHK.	GAURAV		
APPD.	M.P.S.		

SCALE: N.T.S.
 BOM NO.:
 DRG. REF.:

REV. NO.	DESCRIPTION	REV. BY	APPD. BY	DATE

TOLERANCE: ±10%
 WEIGHT: 80±10 Kg.

TITLE
 GENERAL ARRANGEMENT DRAWING OF
 33KV OIL IMMERSED CT (BAR PRIMARY)
 (RATIO:400/1-1A)

DRAWING NO.:-
 GA-013321-311

SHEET NO:- 3 OF 7
 REV. 00

A

B

C

D

E

F

6

5

4

3

2

1

NOTE : DRAWING APPROVAL SUBJECT TO VALID TYPE TEST REPORTS, TO BE CHECKED DURING ACCEPTANCE TESTS.



33KV CURRENT TRANSFORMER

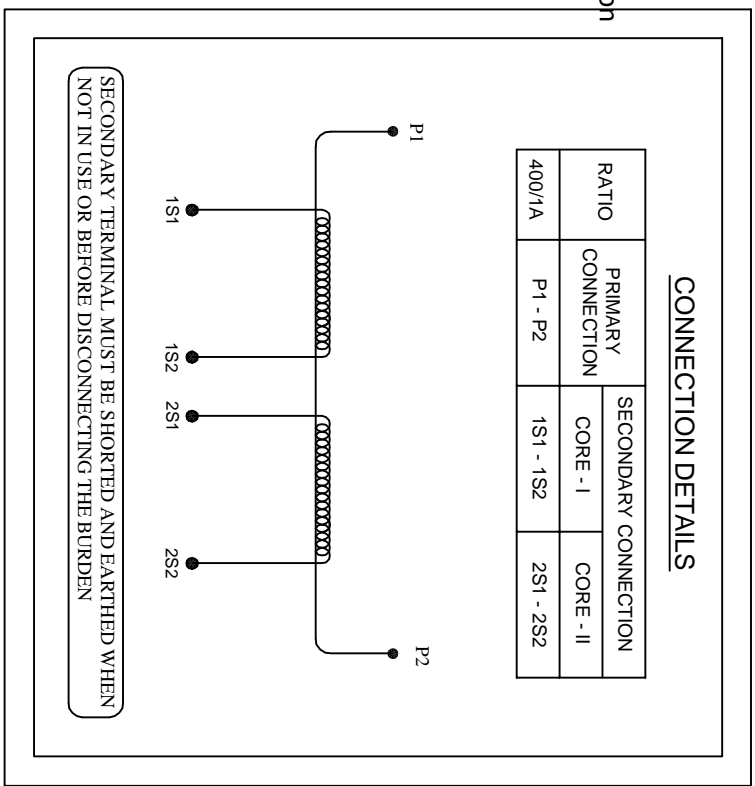
Drawing approval subject to valid vendor registration

S.No.	MADE TO	IS-16227 : 2016
RATIO	BURDEN	15 / 15 VA
HSV / INS. LEVEL	ACC. CLASS	5P / 0.2S
S.T.C.	A.L.F.I./S.F.	10 for PROT. < 5 for MET.
I. Dyn.	Vk.(PS CORE)	NA
CLASS OF INS.	Rct.(PS CORE)	NA
FREQUENCY	Iext.(PS CORE)	NA
TYPE	TOTAL WEIGHT	80±10 Kg.
YEAR OF MFG.	PROP. OF	APTTRANSCO
OIL QUANTITY	TYPE OF INSULATING OIL	IEC 60296
CONTINUOUS CURRENT RATING - 120 %	TEMPERATURE CATEGORY : -5°C to 40°C	

P.O. No. _____
MFD. BY: VISHAL TRANSFORMERS & SWITCHGEARS (P) LTD.
MEERUT (INDIA) 250103

FOR EPC CONTRACTS ONLY

REV. NO.	DESCRIPTION	REV. BY	APPD. BY	DATE
TOLERANCE:-	WEIGHT:-			



Chief Engineer
Power Systems, Planning & Design
APTtransco

VISHAL TRANSFORMERS & SWITCHGEARS (P) LTD.
RTNANI, DELHI ROAD, MEERUT U.P (INDIA)

SCALE	BOM NO.	DRN.	NAME	SIGN.	DATE
N.T.S.		VISHESH			
		GAURAV			
		M.P.S.			
DRG. REF. GA-013321-311					

TITLE		DRAWING NO.:- NP-013321-311	REV.
RATING & CIRCUIT DIAGRAM PLATE			
CT RATIO : 400/1-1A (BAR PRIMARY)		SHEET NO:- 4 OF 7	00

NOTE : DRAWING APPROVAL SUBJECT TO VALID TYPE TEST REPORTS, TO BE CHECKED DURING ACCEPTANCE TESTS.

Drawing approval subject to valid vendor registration

Chief Engineer
Power Systems, Planning & Design
APTtransco

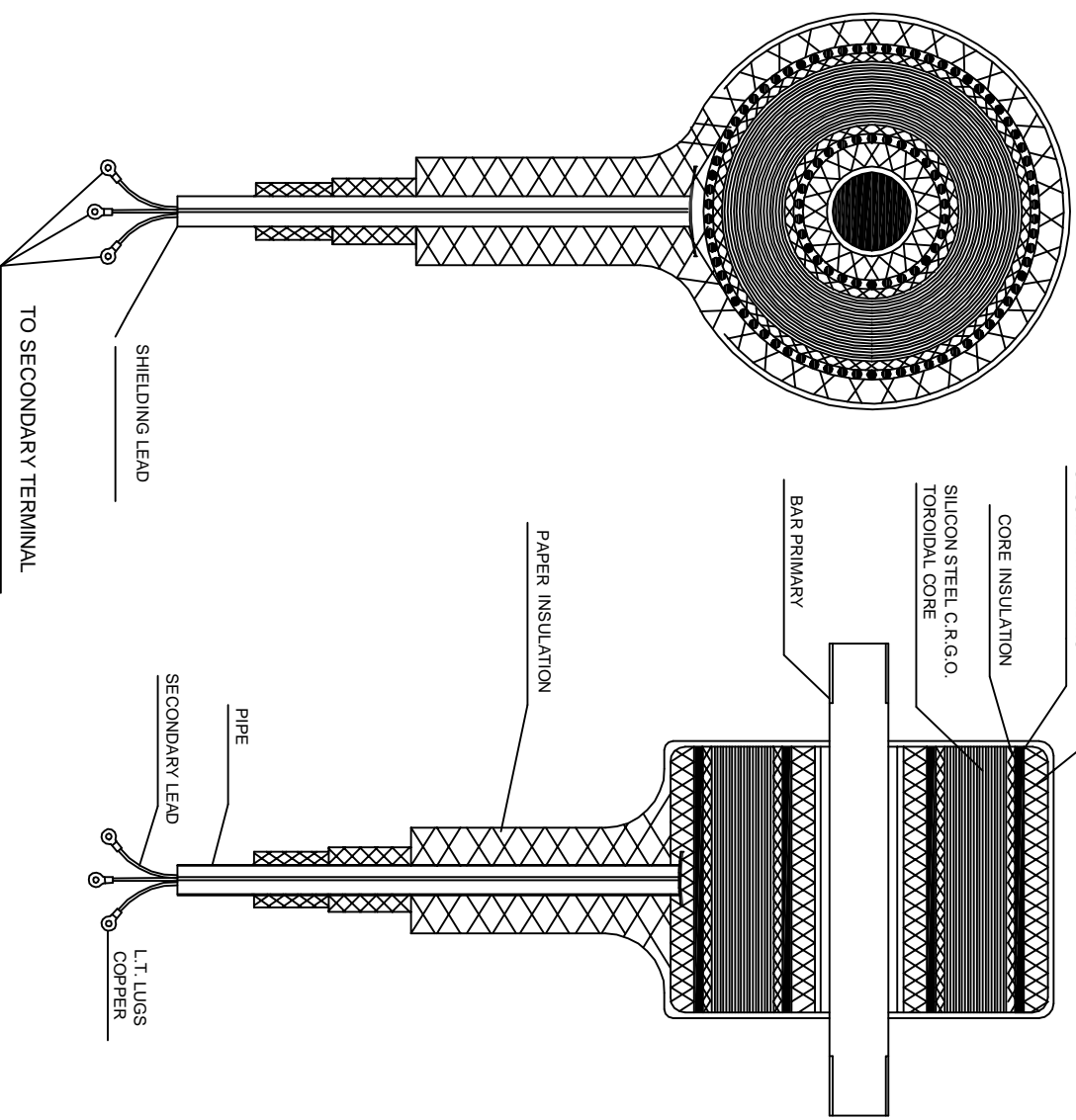
DESIGN DATA :

PRIMARY WINDING :

- 1) Area of cross section : 706.5 Sqmm
- 2) No. of turns : Single (Bar Primary)
- 3) Conductor material : Electrolytic Copper
- 4) Weight of conductor : 3 Kgs approx

SECONDARY WINDING :

- 1) Area of cross section :
 Core-I : 20SWG (0.655Sqmm)
 Core-II : (21+22SWG) (0.915Sqmm)
- 2) No. of secondary turns : 400 Turns (For all cores)
- 3) Conductor material : Super enamel copper wire



FOR EPC CONTRACTS ONLY

VISHAL TRANSFORMERS & SWITCHGEARS (P) LTD.
 RTNANI, DELHI ROAD, MEERUT U.P (INDIA)

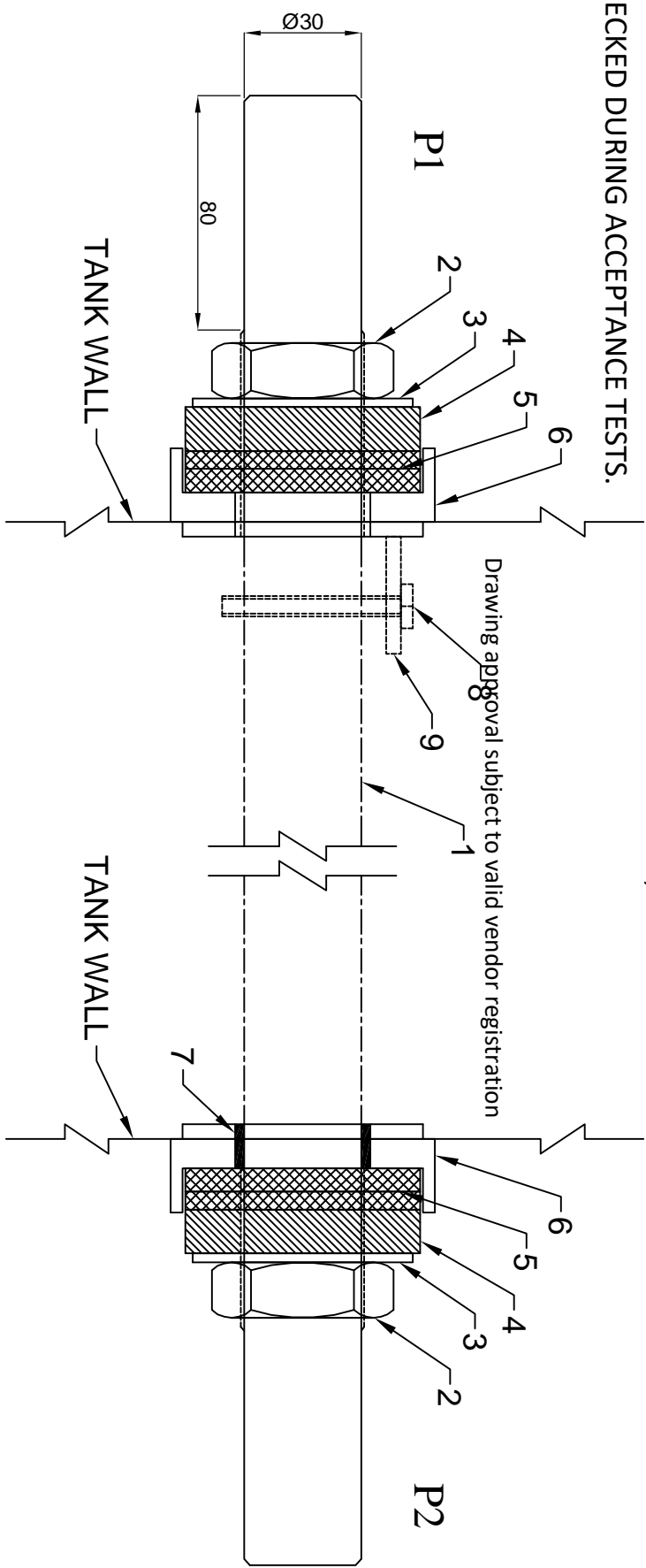
SCALE N.T.S.	BOM NO.	DRN. VISHESH	NAME	SIGN.	DATE
		CHK. GAURAV			
		APPD. M.P.S.			
DRG. REF. GA-013321-311					

TITLE		DRAWING NO. :- SEC-013321-311	REV.
SECTIONAL VIEW OF INTERNAL JOB FOR 33KV LT CT CT RATIO : 400/1-1A (BAR TYPE)			
SHEET NO:- 5 OF 7		00	

REV. NO.	DESCRIPTION	REV. BY	APPD. BY	DATE
TOLERANCE:-	-	WEIGHT:-	-	

ALL DIMENSIONS ARE IN MM. 6 5 4 3 2 1

NOTE : DRAWING APPROVAL SUBJECT TO VALID TYPE TEST REPORTS, TO BE CHECKED DURING ACCEPTANCE TESTS.



BILL OF MATERIAL

S.No.	ITEM	MATE. / SPEC.	QTY.
1.	PRIMARY (BAR TYPE)	TINNED COPPER	1 No.
2.	MAIN NUT	BRASS	1 No. EACH SIDE
3.	BRASS WASHER	BRASS TH.-3mm	1 No. EACH SIDE
4.	BUSHING WASHER	F.R.P.	1 No. EACH SIDE
5.	GASKET WASHER FOR OIL SEALING	NITRILE BUTYL RUBBER	2 Nos. EACH SIDE
6.	BUSH (WELDED WITH TANK)	M.S. / S.S.	1 No. EACH SIDE
7.	ISOLATING SLEEVE (ONLY ON P2 SIDE)	POLYESTER	1 No.
8.	PRIMARY ROD STOPPER PIN	M.S. (6mm dia)	1 No.
9.	STRIP WELDED WITH TANK (FOR HOLDING STOPPER PIN)	M.S.	1 No.

FOR EPC CONTRACTS ONLY

REV. NO.	DESCRIPTION	REV. BY	APPD. BY	DATE

TOLERANCE:- -

WEIGHT:- -

Chief Engineer
Power Systems, Planning & Design
APTransco

VISHAL TRANSFORMERS & SWITCHGEARS (P) LTD.
RITHANI, DELHI ROAD, MEERUT U.P (INDIA)

SCALE	BOM NO.
N.T.S.	

TITLE
EMERGENCE OF PRIMARY TERMINAL FOR 33kV CT
CT RATIO : 400/1-1A (BAR TYPE)

DRN.	VISHESH	NAME	SIGN.	DATE
CHK.	GAURAV			
APPD.	M.P.S.			

DRG. REF.
GA-013321-311

DRAWING NO.:-
PRI. TER.-3080

SHEET NO:- 6 OF 7

REV. 00

A

B

C

D

E

F

6

5

4

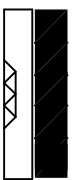
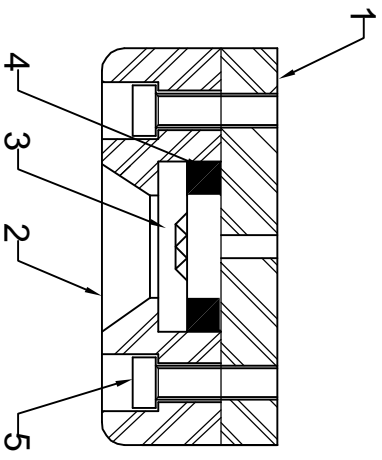
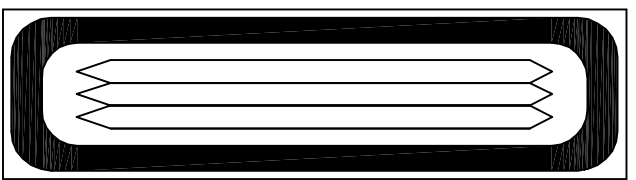
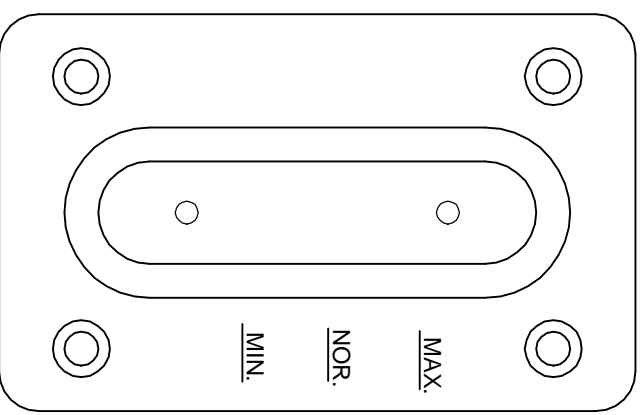
3

2

1

NOTE : DRAWING APPROVAL SUBJECT TO VALID TYPE TEST REPORTS, TO BE CHECKED DURING ACCEPTANCE TESTS.

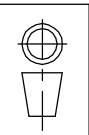
S.No.	ITEM	MATE. / SPEC.	QTY.
1.	BASE PLATE (WELDED WITH TANK)	M.S.	1No.
2.	TOP PLATE	ALUMINIUM	1No.
3.	PRISMATIC GLASS	-	1No.
4.	GASKET	NITRILE BUTYL RUBBER	1No.
5.	ALLEN KEY BOLT	-	4Nos.



Drawing approval subject to valid vendor registration

Chief Engineer
Power Systems, Planning & Design
APTransco

VISHAL TRANSFORMERS & SWITCHGEARS (P) LTD.
RITHANI, DELHI ROAD, MEERUT U.P (INDIA)



SCALE: N.T.S.
BOM NO.

DRN.	NAME	SIGN.	DATE
CHK.	VISHESH GAURAV		
APPD.	M.P.S.		

DRG. REF: GA-013321-311

REV.NO.	DESCRIPTION	REV. BY	APPD. BY	DATE
TOLERANCE:-				
WEIGHT:-				

TITLE
OIL LEVEL INDICATOR FOR 33KV CT
(CT RATIO : 400/1-1A)

DRAWING NO. :- OLI-065

SHEET NO:- 7 OF 7

REV. 00

ALL DIMENSIONS ARE IN MM.

A

B

C

D

E

F

6

5

4

3

2

1